

FAN BOX

Ceiling (Paddle) Fans
to 70lb/32kg

FEATURES

- BIG 26 Cubic Inch Capacity
- 4 Fixture Mounting Screws
- Built in Cable Clamps
- 2 Hour Fire Wall Rated

RED COLOR BENEFITS

- Fire Alarm Bells
- Smoke/Heat Detectors
- Exit Lights
- Emergency Lighting

SUPER BOX

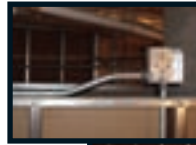


Part #SB400

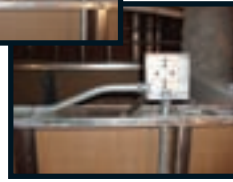
FIRE
ALARM
BOX

STAND OFF BRACKET

Box Mounting Plate



Code
Violation



Code
Compliant



Part #SO550

- Allows for stub up fittings
- Code compliant
- Pre-punched for 4"x4" boxes

RAPID FIRE 'ROMEX® CONNECTORS

RAT 500

1/2"

Part #RAT500



RAT 750

3/4"

Part #RAT750



FAST • NO LOCKNUTS
EASY • NO TOOLS REQUIRED

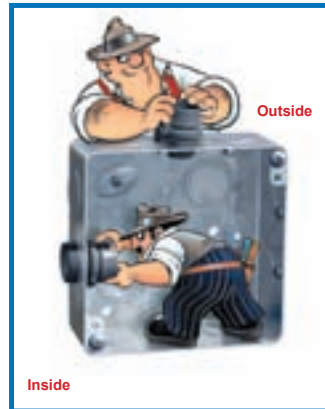
RAT 750 3/4"	Single Cables:	8/3, 6/3
RAT 500 & TT 500 1/2"	Single Cables:	14/2, 14/3, 12/2, 12/3, 10/2, 10/3
	Two Cables:	14/2, 14/3, 12/2

'ROMEX®, a nonmetallic building electrical wire, is a registered Trademark of Southwire Company.

Doing some renovation work? The TT500 also installs from the inside of the box after the wire is fished in. Ingenious. The RAT500 and RAT750 feature the same quality and large wire capacity but install from the outside for use in new construction. If you like the best, try these.

TT 500

TOM TWO WAY



Outside

Inside

OLD WORK, NEW WORK
INSTALLS FROM **INSIDE**
OR **OUTSIDE** THE BOX



1/2"

Part #TT500

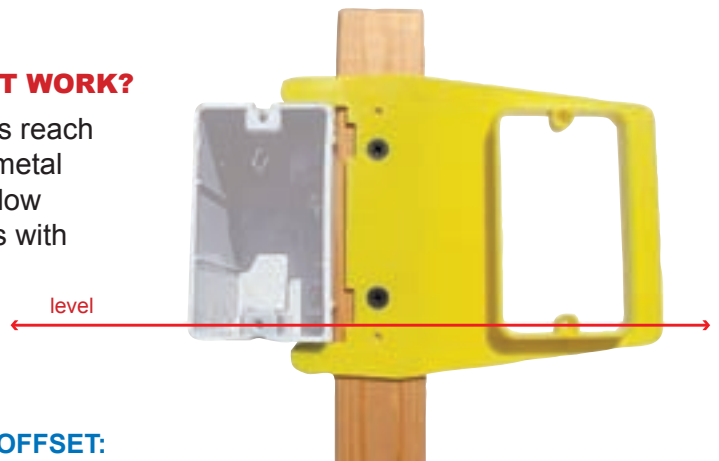
LEVEL JACK

LOW VOLTAGE DATA/COM MUD RING



HOW DOES IT WORK?

Alignment tabs reach across wood/metal studs to level low voltage outlets with A.C. boxes.



level

EXTRA OFFSET:

- Allows use of all standard fittings
- Reduces A.C. interference to low voltage devices
- Improves drywall finish

Part #LJ50R
#LJ58R
#LJ100R

No tape measure • No level required

Available in 1/2", 5/8" and 1" rise

If you're fussy about your rough-in layout, the Level Jack makes life easy. If you're not, no one will notice because you can't screw up with the Level Jack. Just clip it on to the AC box and screw it down. No level, no tape measure, no special boxes, no special fittings required. Level Jacks fit most AC boxes. See the cartoon for details.