



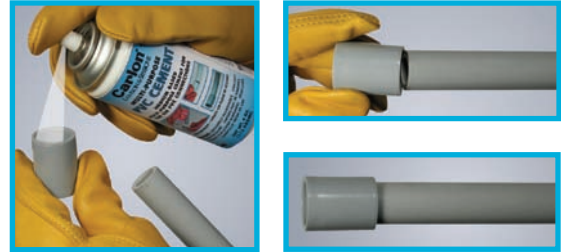
Multi-Purpose Spray-On PVC Cement

No Waste • Sprays on in seconds • Fast setting



- Equivalent to a medium bodied low-VOC, quick setting clear cement
- No more spills
- Reuse can until empty
- Installation: 50°F to 80°F
Storage: 35°F to 120°F
- Meets ASTM D-2564
- 3 year shelf life
- One 4 oz. can is equivalent to 4 oz. of non-aerosol PVC cement*

*Equivalence is subject to usage and will vary



Applications:

- For use up to 4" dia. Sch 40 or 80 PVC electrical conduit
- Not recommended for use on natural gas, compressed gas or air connections.

Temperature Range	RECOMMENDED SET TIME		
	Pipe Sizes 1/2" to 1-1/4"	Pipe Sizes 1-1/2" to 2"	Pipe Sizes 2-1/2" to 4"
60° - 100°F	2 min.	5 min.	30 min.
40° - 60°F	5 min.	10 min.	2 hrs.
0° - 40°F	10 min.	15 min.	12 hrs.

Recommended set time may vary depending on humidity

Part No	Size	Description	Ctn. Qty.	Ctn. Wt. (lbs.)
VC9AC5	4 oz.	PVC Spray-On Medium - Clear	12	5.6
🍁 VC9AC5C	4 oz.	PVC Spray-On Medium - Clear	12	5.6
VC9AC16	11 oz.	PVC Spray-On Medium - Clear	12	12.3
🍁 VC9AC16C	11 oz.	PVC Spray-On Medium - Clear	12	12.3

🍁 Canada only

Low VOC - Gray



Recommended pipe application and sizes	Set-up time (Evaporation Rate)	Recommended installation temp.	Lap Shear @ 73°F	Viscosity at 75° as manufactured
Recommended for all grades and types of Carlon PVC conduit, duct, wireway and fittings, except Flex-Plus® Blue™ ENT (Electrical Nonmetallic Tubing.) Up through 6" diameter. VOC emission of 490 grams/liter per the Bay and South Coast test method.	10°-30°F Not recommended 30°-50°F 5-6 minutes 50°-70°F 3-4 minutes 70°-90°F 1-2 minutes	40° to 100°F	2 hrs. 350 psi 16 hrs. 800 psi 72 hrs. 1,500 psi	500-900 cps

Part No	Size	Applicator	Description	Ctn. Qty.	Ctn. Wt. (lbs.)
VC9LV4-24	1/2 Pint	Dauber	Low VOC Gray	24	15.5
VC9LV3	Pint	Dauber	Low VOC Gray	24	27.0
VC9LV2	Quart	Dauber	Low VOC Gray	12	26.0

Meets ASTM D-2564