

Electrical Construction Supplies

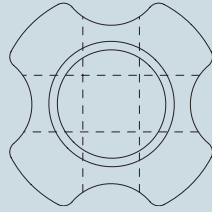
Porcelain Insulators

Strain Insulators

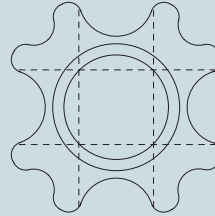
High quality insulators. Porcelain in compression for maximum strength. Catalog item #500-D made of economical dry process porcelain. Others made of wet process porcelain. Catalog item #708 is a multi-fin type.

Standard insulator glaze "Skyline" ANSI-70, Munsell 5 BG

502



708

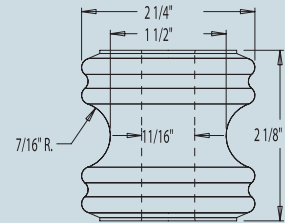


Catalog No.	ANSI class	Tensile Strength Pounds	Length (inches)	Diameter (inches)	Hole (inches)	Std. Pkg.	Wt. per 100
500-D			2 1/4	1 11/16	3/8	100	23
502	54-1	10.000	3 1/2	2 1/2	5/8	50	128
504	54-2	12.000	4 1/4	2 7/8	7/8	25	178
506	54-3	20.000	5 1/2	3 3/8	1	25	368
708	54-4	20.000	6 3/4	3 1/2	1	20	380

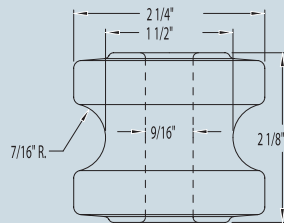
Suffix D - Dry Process Porcelain

Spool Insulators - Wet Process Porcelain

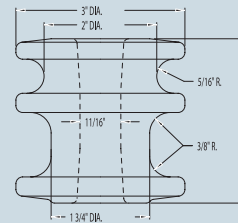
5112



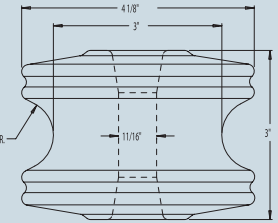
5107



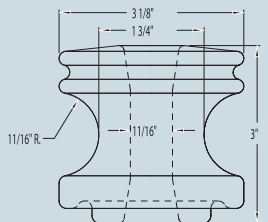
5102



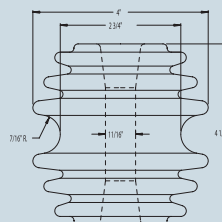
5119



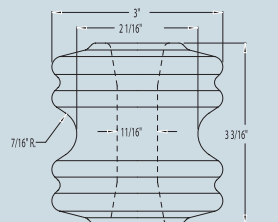
5101



5116



5104



Mechanical and Electrical Characteristics

Catalog No.	ANSI Class	Ultimate Strength (lbs.)	LOW-FREQUENCY FLASHOVER-KV			Std. Pkg.	Wt. per 100
			Dry	Vert. Wet	Horiz. Wet		
5101	53-2	3.000	25	12	15	50	120
5102	53-2	3.000	20	10	12	50	110
5104	53-3	4.000	25	12	15	50	135
5107	53-3	1.750	18	7	9	100	45
5112	53-1	2.000	20	8	10	100	50
5116	53-5	6.000	35	18	25	25	250
5119	53-4	4.500	25	12	15	25	252

Standard insulator glaze "Skyline" ANSI-70, Munsell 5 BG 7.0/0.4. Brown or white glaze available on special order, add suffix "B" to catalog number for brown glaze or "W" for white glaze