

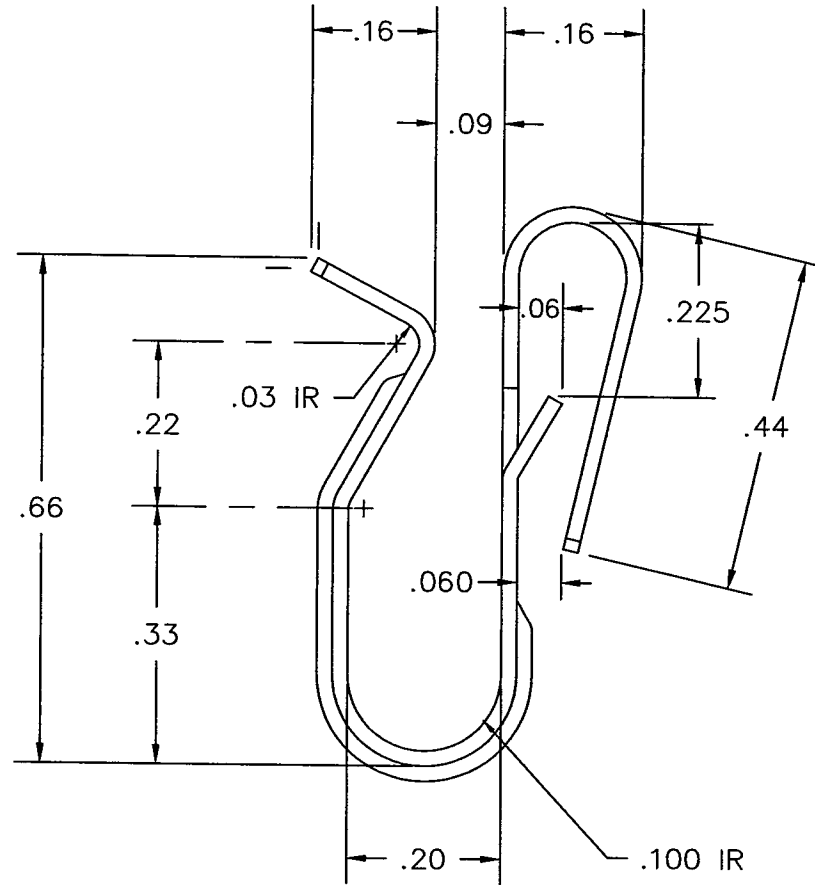
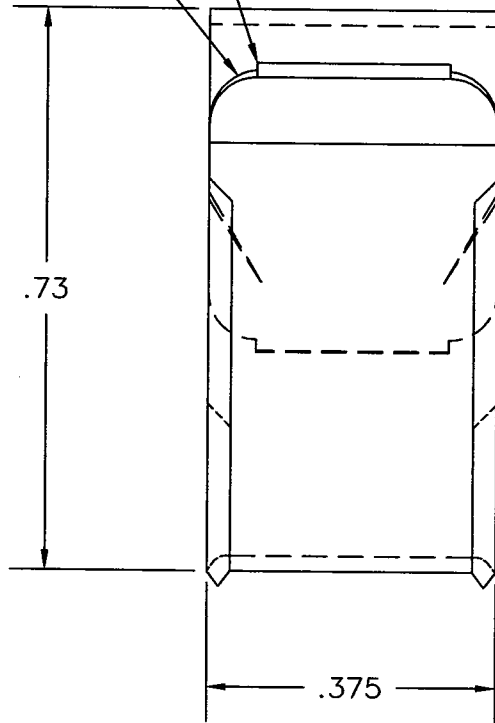
NOTES: 1. Ⓢ STAMP MUST APPEAR ON FACE OF PART.

TOLERANCES
UNLESS NOTED

2 PLACE	+/-	.020
3 PLACE	+/-	.010
ANGLES	+/-	3°

.015 CARRY TAB 2 PLCS.

.06 R 4 PLCS.



ACTUAL SIZE

NOTICE TO PERSONS RECEIVING THIS DRAWING AND/OR TECHNICAL INFORMATION NINE FASTENERS CLAIMS PROPRIETARY RIGHTS TO THE MATERIAL DISCLOSED HEREIN. THIS DRAWING AND/OR TECHNICAL INFORMATION IS ISSUED IN CONFIDENCE FOR ENGINEERING INFORMATION ONLY AND MAY NOT BE REPRODUCED OR USED TO MANUFACTURE ANYTHING SHOWN OR REFERRED TO HEREON WITHOUT DIRECT WRITTEN PERMISSION FROM NINE FASTENERS TO THE USER. THIS DRAWING AND/OR TECHNICAL INFORMATION IS THE PROPERTY OF NINE FASTENERS AND IS LOANED FOR MUTUAL ASSISTANCE, TO BE RETURNED WHEN ITS PURPOSE HAS BEEN SERVED.

NINE FASTENERS

SCALE: 4 TIMES

DATE: 12 JUN 08

CAD FILE: D1306CPR2

DRAWN BY: SJZ

DCS-1306

CLIP

MATERIAL: .020 THK. 410 STAINLESS STEEL ANN.

DRAWING NUMBER
DCS-1306