

Disconnect Switches

Extension Kits

To extend Vacu-Break unit's depth, order the extension kit which meets the specifications of the unit to be extended. Specify by catalog number from the table to the right.

Unit Type	Unit Height (inches)	Normal Unit Depth (inches)	Extended Unit Depth (inches)	Catalog Number
V2A	2½	4 ⁹ / ₁₆	6¾	W43000■
V2B	5	4 ⁹ / ₁₆	6¾	W43002
V7A	2½	6¾	10½	W48762
V7B	5	6¾	10½	W48763
V7E	7½	6¾	10½	W48764
V7F	10	6¾	10½	W48765

Fuse Adapter Kits

Class R and Class J Fuse Kits are single unit part numbers. Order (2) kits for dual units. Class T Fuse Kits are single pole part numbers. Order (3) kits for a 3-pole unit. To order the kit which meets the specifications of the unit to be changed, specify by catalog number from the tables below.

240 Volt Fuse Adapter Kits

Switch Amperage	Class R Kits	Class J Kits	Class T Kits
	Catalog Number	Catalog Number	Catalog Number
30 [ⓐ]	Factory Inst.	—	—
60	W56628	—	—
100	W55365	W49827	TFAK32
200	W55366	W49819	TFAK42
400	W55367	W49814	TFAK52
600	W55368	W49813	TFAK62

600 Volt Fuse Adapter Kits

Switch Amperage	Class R Kits	Class J Kits	Class T Kits
	Catalog Number	Catalog Number	Catalog Number
30	W56623	W49832	—
60	W56629	W49830	—
100	W55365	W49828	TFAK35
200	W55366 [ⓑ]	W49818 [ⓑ]	TFAK45
400	W55367	W49816	TFAK55
600	W55368	W49815	TFAK65
800	—	—	TFAK75

Vacu-Break Connecting Strap Kits For Panelboards and Switchboards

Ampere Rating	240V Unit Height (inches)	600V Unit Height (inches)	S4/F1, FPP (10" Deep) Strap Kit	S5/F2 (12.75" Deep) Strap Kit	SB1, SB2, SB3, FC-20, FC-1, VB-5, VB-6, Strap Kit
30-30	2.5	—	F602	F602D	—
30-30	5	7.5	F657	F657D	VB657
30-60	5	7.5	F657	F657D	VB657
60-60	5	7.5	F657	F657D	VB657
60-100	7.5	7.5	F657	F657D	VB657
100-100	7.5	7.5	F657	F657D	VB657
100	7.5	7.5	F657	F657D	VB657
200	7.5, 10	7.5, 10	F671	F671D	VB671
200-200	10	10	F672	F672D	VB610
400	15	15	—	—	VB6150
600	15	15	—	F6150D	VB6150

Ordering Information

Catalog Number	Description
Fuse Clip Kits	
VBFCL3 [Ⓓ]	100A for V2E & V7E units (6) fuse clips per kit
VBFCL4 [Ⓔ]	200A for V2E, V2F, V7E & V7F units (6) fuse clips per kit
VBFCL5 [Ⓓ]	400A for V7H & VMS units (3) fuse clips per kit
VBFCL6 [Ⓓ]	600A for V7H & VMS units (3) fuse clips per kit
Lug Kits	
VBRL4	200A for V2F, V7E & V7F units (3) lugs per kit
VBRL5	400A for V7H units (6) lugs per kit
VBRL6	600A for V7H units (6) lugs per kit
Handle Kits	
VBRHK1232	100A for twin V2E & V7E units (2) handles per kit
VBRHK41	200A for single V2E, V2F, V7E & V7F units (1) handle per kit
VBRHK42	200A for twin V7F units (2) handles per kit

For inches / millimeters conversion, multiply inches by 25.4.

■ Built to order. Allow 2-3 weeks for delivery.

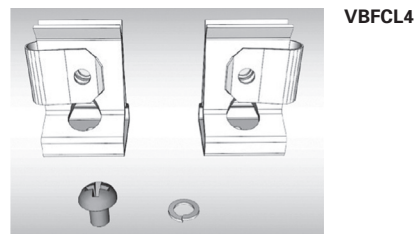
ⓐ For 200 A single units only. Dual units are suitable for Class J only, when used above 240V.

ⓑ 5" unit height switches only.

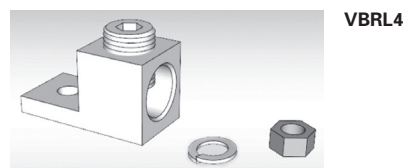
ⓒ For single units only.

ⓓ Fuse clips provided can be used on both the line and load sides.

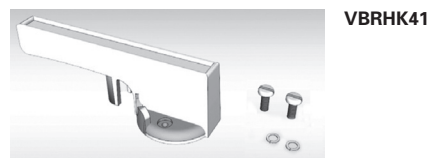
ⓔ Three line and three load fuse clips are provided.



VBFCL4



VBRL4



VBRHK41