

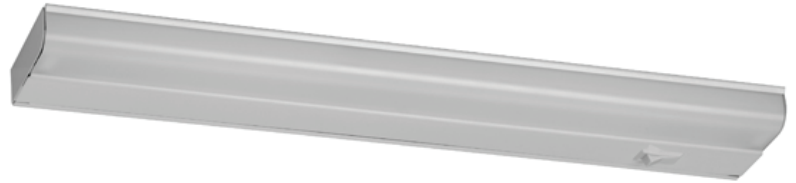


LOCATION		DATE
PREPARED BY		QUANTITY
COMMENTS		FIXTURE TYPE
CATALOG NUMBER		

LED Undercabinet T5L Series

Features

All purpose direct wire LED undercabinet light. Low profile applications include kitchens, study areas, displays and computer stations. Standard knockouts are located on top, back or ends for direct connection. A direct wire UL listed connector is included and is suitable for 3/8" flexible conduit or 3 wire Romex.



Construction

Housing is die-formed of 22-gauge steel. Separate hinge service tray allows for easy installation and snaps into position without hardware. Power connections are made inside service tray.

Finish

All exposed metal parts are post painted lighting grade white or oil-rubbed bronze paint.

Diffuser

Smooth white acrylic diffuser snap-fits into housing.

Electrical

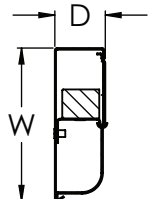
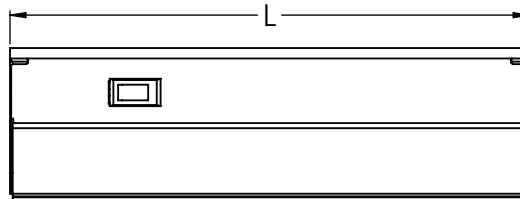
This unit is wired for 120V operation. This LED fixture contains a Triac dimmable driver. Dimmable with most standard 2-wire (TRIAC) wall dimmers or electronic low-voltage dimmer switch (sold separately). On/off switch included.

Lamping

LED lamping, type SMT array, 3000K nonreplaceable, rated 50,000 hrs.

Certification

Fixtures are cETLus listed for damp locations. ENERGY STAR Qualified.



Warranty

Limited warranty. This fixture guaranteed to be free from defects in materials and workmanship for a period of 5 years from date of purchase.

Specifications and dimensions
subject to change without notice.

Compatible Wall Dimmers

Brand	Model #
Cooper	6013W
Leviton®	6633, 6681, 6621-WWP, 6631-WWP, DSE06-10Z
Lutron®	TG-600P, TG-603P, AY600P, MACL153MH, SELV-300P
Legrand®	T600WV, WS700TCCCV6
Pass & Seymour	

Ordering Information:

White	Oil-Rubbed Bronze	Type	Watt	Lumens	LPW	L	W	D
T5L12RWH	T5L12RRB	SMT-Array	5	315	63	12"	3-1/2"	1-1/8"
T5L18RWH	T5L18RRB	SMT-Array	7.5	520	69	18"	3-1/2"	1-1/8"
T5L21RWH	T5L21RRB	SMT-Array	8.5	570	67	21"	3-1/2"	1-1/8"
T5L24RWH	T5L24RRB	SMT-Array	9	630	70	24"	3-1/2"	1-1/8"
T5L33RWH	T5L33RRB	SMT-Array	13.5	950	70	33"	3-1/2"	1-1/8"
T5L42RWH	T5L42RRB	SMT-Array	16.5	1150	69	42"	3-1/2"	1-1/8"