

# Support Arm System CP-L

## Aluminum



### Support section CP-L

Attachment to the connection components with 4 self-tapping screws in a screw channel, may be cut to any required length.

**Size:**  
50 x 85 mm (2.0 x 3.3")

**Wall thickness:**  
8 mm (0.3")

**Material:**  
Extruded aluminum

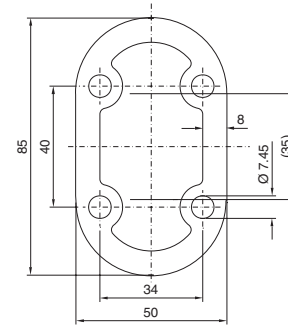
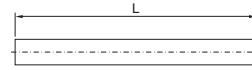
**Note:**  
Load information,  
see page 188.

**German patent no. 43 31 124**  
**French patent no. 94 10 806**  
**Ital. patent no. 01275022**  
**Jap. patent no. 2730621**  
**US patent no. 5,460,894**

Length (L) <sup>1)</sup> mm (inches)	Weight kg (lb)	RAL 7035 Part No. CP	RAL 9006 Part No. CP
250 (9.8)	1.3 (2.9)	<b>6509.000</b>	<b>6509.010</b>
500 (19.7)	2.6 (6.4)	<b>6511.000</b>	<b>6511.010</b>
1000 (39.4)	5.1 (11.2)	<b>6513.000</b>	<b>6513.010</b>
2000 (78.7)	10.2 (22.5)	<b>6515.000</b>	<b>6515.010</b>

<sup>1)</sup> L min = 135 mm (5.1")

Color: RAL 7035 (light gray); RAL 9006 (white aluminum)



### 90° support arm bracket CP-L

The compact, robust alternative.

**Material:**  
Extruded aluminum

Color RAL	Weight kg (lb)	Part No. CP
7035 (light gray)	3.4 (7.5)	<b>6519.000</b>
9006 (white aluminum)	3.4 (7.5)	<b>6519.010</b>

