

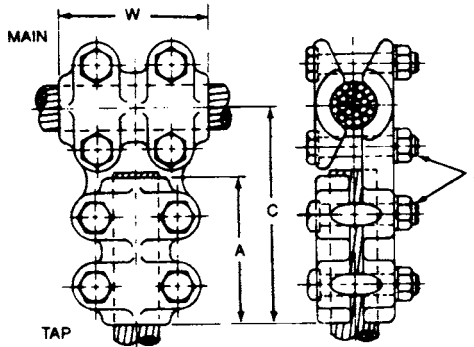


# TEES BOLTED ALUMINUM CABLE MAIN TO CABLE TAP

|          |
|----------|
| ALUMINUM |
| ATCC     |

Aluminum alloy, cable to cable, tee for connecting aluminum-aluminum or aluminum-copper conductor combinations. Clamping bolts have hex-stops for one-wrench installation. Contact sealant is recommended.

Material: Castings—356-T6 aluminum alloy  
Hardware—aluminum alloy



## Product Data & Conductor Size

| CATALOG NUMBER | CONDUCTOR RANGE |                |                 |                | DIMENSIONS INCHES (MM) |                  |                  |               | APPROX. WT. EACH LBS. (KG) |
|----------------|-----------------|----------------|-----------------|----------------|------------------------|------------------|------------------|---------------|----------------------------|
|                | CABLE MAIN      |                | CABLE TAP       |                | C                      | A                | W                | J             |                            |
|                | AAC             | ACSR           | AAC             | ACSR           |                        |                  |                  |               |                            |
| ***ATCC66      | #4 Sol.-250 MCM | #4-4/0 Str.    | #4 Sol.-250 MCM | #4-4/0 Str.    | 4-3/8<br>(111.12)      | 3<br>(76.2)      | 3<br>(76.2)      | 1/2<br>(12.7) | .9<br>(.41)                |
| *ATCC76        | 250-400 MCM     | 4/0-336.4 MCM  | #4 Sol.-250 MCM | #4-4/0 Str.    | 4-3/8<br>(111.12)      | 3<br>(76.2)      | 3<br>(76.2)      | 1/2<br>(12.7) | 1.0<br>(.45)               |
| ATCC77         |                 |                | 250-400 MCM     | 4/0-336.4 MCM  | 4-3/8<br>(111.12)      | 3<br>(76.2)      | 3<br>(76.2)      | 1/2<br>(12.7) | 1.0<br>(.45)               |
| *ATCC96        | 350-600 MCM     | 336.4-477 MCM  | #4 Sol.-250 MCM | #4-4/0 Str.    | 4-1/2<br>(114.3)       | 3<br>(76.2)      | 3-1/4<br>(82.55) | 1/2<br>(12.7) | 1.1<br>(.50)               |
| ATCC97         |                 |                | 250-400 MCM     | 4/0-336.4 MCM  | 4-1/2<br>(114.3)       | 3<br>(76.2)      | 3-1/4<br>(82.55) | 1/2<br>(12.7) | 1.1<br>(.50)               |
| ATCC99         |                 |                | 350-600 MCM     | 336.4-477 MCM  | 4-3/4<br>(120.65)      | 3-1/4<br>(82.55) | 3-1/4<br>(82.55) | 1/2<br>(12.7) | 1.1<br>(.50)               |
| *ATCC116       | 600-900 MCM     | 556.5-795 MCM  | #4 Sol.-250 MCM | #4-4/0 Str.    | 4-5/8<br>(117.48)      | 3<br>(76.2)      | 3-1/2<br>(88.9)  | 1/2<br>(12.7) | 1.2<br>(.54)               |
| ATCC117        |                 |                | 250-400 MCM     | 4/0-336.4 MCM  | 4-5/8<br>(117.48)      | 3<br>(76.2)      | 3-1/2<br>(88.9)  | 1/2<br>(12.7) | 1.3<br>(.59)               |
| ATCC119        |                 |                | 350-600 MCM     | 336.4-477 MCM  | 4-7/8<br>(123.82)      | 3-1/4<br>(82.55) | 3-1/2<br>(88.9)  | 1/2<br>(12.7) | 1.3<br>(.59)               |
| ATCC1111       |                 |                | 600-900 MCM     | 556.5-795 MCM  | 5-1/8<br>(130.18)      | 3-1/2<br>(88.9)  | 3-1/2<br>(88.9)  | 1/2<br>(12.7) | 1.4<br>(.64)               |
| *ATCC136       | 900-1250 MCM    | 715.5-1113 MCM | #4 Sol.-250 MCM | #4-4/0 Str.    | 4-3/4<br>(120.65)      | 3<br>(76.2)      | 3-3/4<br>(95.25) | 1/2<br>(12.7) | 1.7<br>(.77)               |
| ATCC137        |                 |                | 250-400 MCM     | 4/0-336.4 MCM  | 4-3/4<br>(120.65)      | 3<br>(76.2)      | 3-3/4<br>(95.25) | 1/2<br>(12.7) | 1.8<br>(.82)               |
| ATCC139        |                 |                | 350-600 MCM     | 336.4-477 MCM  | 5<br>(127.0)           | 3-1/4<br>(82.55) | 3-3/4<br>(95.25) | 1/2<br>(12.7) | 2.0<br>(.91)               |
| ATCC1311       |                 |                | 600-900 MCM     | 556.5-795 MCM  | 5-1/4<br>(133.35)      | 3-1/2<br>(88.9)  | 3-3/4<br>(95.25) | 1/2<br>(12.7) | 2.1<br>(.95)               |
| ATCC1313       |                 |                | 900-1250 MCM    | 715.5-1113 MCM | 5-1/2<br>(139.7)       | 3-3/4<br>(95.25) | 3-3/4<br>(95.25) | 1/2<br>(12.7) | 2.2<br>(1.0)               |

\* Tap connections are furnished with reversible cable caps.  
\*\*\* Main and tap connections are furnished with reversible cable caps.  
Continued on next page.

SC-1



# TEES BOLTED ALUMINUM CABLE MAIN TO CABLE TAP Continued

## Product Data & Conductor Size

| CATALOG NUMBER | CONDUCTOR RANGE |                 |                 |                 | DIMENSIONS INCHES (MM) |                   |                   |                | APPROX. WT. EACH LBS. (KG) |
|----------------|-----------------|-----------------|-----------------|-----------------|------------------------|-------------------|-------------------|----------------|----------------------------|
|                | CABLE MAIN      |                 | CABLE TAP       |                 | C                      | A                 | W                 | J              |                            |
|                | AAC             | ACSR            | AAC             | ACSR            |                        |                   |                   |                |                            |
| *ATCC156       | 1250-1600 MCM   | 1113-1272 MCM   | #4 Sol.-250 MCM | #4-4/0 Str.     | 4-7/8<br>(123.82)      | 3<br>(76.2)       | 4-1/4<br>(107.95) | 1/2<br>(12.7)  | 2.1<br>(.95)               |
| ATCC157        |                 |                 | 250-400 MCM     | 4/0-336.4 MCM   | 4-7/8<br>(123.82)      | 3<br>(76.2)       | 4-1/4<br>(107.95) | 1/2<br>(12.7)  | 2.2<br>(1.0)               |
| ATCC159        |                 |                 | 350-600 MCM     | 336.4-477 MCM   | 5-1/8<br>(130.18)      | 3-1/4<br>(82.55)  | 4-1/4<br>(107.95) | 1/2<br>(12.7)  | 2.3<br>(1.04)              |
| ATCC1511       |                 |                 | 600-900 MCM     | 556.5-795 MCM   | 5-3/8<br>(136.52)      | 3-1/2<br>(88.9)   | 4-1/4<br>(107.95) | 1/2<br>(12.7)  | 2.4<br>(1.09)              |
| ATCC1513       |                 |                 | 900-1250 MCM    | 715.5-1113 MCM  | 5-5/8<br>(142.88)      | 3-3/4<br>(95.25)  | 4-1/4<br>(107.95) | 1/2<br>(12.7)  | 2.4<br>(1.09)              |
| ATCC1515       |                 |                 | 1250-1600 MCM   | 1113-1272 MCM   | 6-1/4<br>(158.75)      | 4-1/4<br>(107.95) | 4-1/4<br>(107.95) | 5/8<br>(15.88) | 2.5<br>(1.13)              |
| *ATCC166       |                 |                 | 1500-2000 MCM   | 1272-1590 MCM   | #4 Sol.-250 MCM        | #4-4/0 Str.       | 4-3/4<br>(120.65) | 3<br>(76.2)    | 4-1/2<br>(114.3)           |
| ATCC167        | 250-400 MCM     | 4/0-336.4 MCM   |                 |                 | 5<br>(127.0)           | 3<br>(76.2)       | 4-1/2<br>(114.3)  | 1/2<br>(12.7)  | 2.6<br>(1.18)              |
| ATCC169        | 350-600 MCM     | 336.4-477 MCM   |                 |                 | 5-1/4<br>(133.35)      | 3-1/4<br>(82.55)  | 4-1/2<br>(114.3)  | 1/2<br>(12.7)  | 2.9<br>(1.32)              |
| ATCC1611       | 600-900 MCM     | 556.5-795 MCM   |                 |                 | 5-1/2<br>(139.7)       | 3-1/2<br>(88.9)   | 4-1/2<br>(114.3)  | 1/2<br>(12.7)  | 3.1<br>(1.41)              |
| ATCC1613       | 900-1250 MCM    | 715.5-1113 MCM  |                 |                 | 5-3/4<br>(146.05)      | 3-3/4<br>(95.25)  | 4-1/2<br>(114.3)  | 1/2<br>(12.7)  | 3.5<br>(1.59)              |
| ATCC1615       | 1250-1600 MCM   | 1113-1272 MCM   |                 |                 | 6-3/8<br>(161.92)      | 4-1/4<br>(107.95) | 4-1/2<br>(114.3)  | 5/8<br>(15.88) | 3.7<br>(1.68)              |
| ATCC1616       | 1500-2000 MCM   | 1272-1590 MCM   |                 |                 | 6-5/8<br>(168.28)      | 4-1/2<br>(114.3)  | 4-1/2<br>(114.3)  | 5/8<br>(15.88) | 4.0<br>(1.81)              |
| ATCC186        | 2000-2500 MCM   | 1.632-1.824 in. | #4 Sol.-250 MCM | #4-4/0 Str.     | 4-7/8<br>(123.82)      | 3<br>(76.2)       | 4-3/4<br>(120.65) | 1/2<br>(12.7)  | 2.7<br>(1.22)              |
| ATCC187        |                 |                 | 250-400 MCM     | 4/0-336.4 MCM   | 5<br>(127)             | 3<br>(76.2)       | 4-3/4<br>(120.65) | 1/2<br>(12.7)  | 2.9<br>(1.32)              |
| ATCC189        |                 |                 | 350-600 MCM     | 336.4-477 MCM   | 5-1/4<br>(133.35)      | 3-1/4<br>(82.55)  | 4-3/4<br>(120.65) | 1/2<br>(12.7)  | 3.2<br>(1.45)              |
| ATCC1811       |                 |                 | 600-900 MCM     | 556.5-795 MCM   | 5-1/2<br>(139.7)       | 3-1/2<br>(88.9)   | 4-3/4<br>(120.65) | 1/2<br>(12.7)  | 3.5<br>(1.59)              |
| ATCC1815       |                 |                 | 1250-1600 MCM   | 1113-1272 MCM   | 6-5/8<br>(168.28)      | 4-1/4<br>(107.95) | 4-3/4<br>(120.65) | 5/8<br>(15.88) | 3.9<br>(1.77)              |
| ATCC1816       |                 |                 | 1500-2000 MCM   | 1272-1590 MCM   | 6-11/16<br>(169.86)    | 4-1/2<br>(114.3)  | 4-3/4<br>(120.65) | 5/8<br>(15.88) | 4.1<br>(1.86)              |
| ATCC1818       |                 |                 | 2000-2500 MCM   | 1.632-1.824 in. | 6-7/8<br>(174.62)      | 4-3/4<br>(120.65) | 4-3/4<br>(120.65) | 5/8<br>(15.88) | 4.4<br>(2.0)               |

\* Tap connections are furnished with reversible cable caps.

SC-2