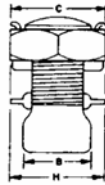
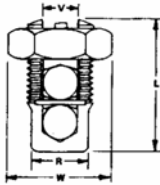




POWER CONNECTORS

Split Bolt Connectors With Spacer Dual Rated For Copper & Aluminum



- UL listed for all combinations of Aluminum, Aluminum to Copper, and Copper to Copper stranded wires
- 90412~90420 Manufactured from copper alloy, 90422~90426 manufactured from aluminum alloy
- Uniform bright electro-tin plating resists corrosion, reduces contact resistance and gives you maximum conductivity
- Spacer separates dissimilar conductors and provides long contact length that prevents high pressure point contacts between run and tap connectors
- Free turning threads and easy to grip wrench flats
- Highly resistant to season cracking and corrosion
- Anti Oxidant is recommended for all aluminum terminations
- Rated for 600 Volts

Dimension Measurement = Inches

Cat No.	AWG	Max Run To Max Tap	Min Run To Min Tap	Max Run To Min Tap	Min Equal Tap & Run	Temp Rating	Torque In-Lb	B	C	H	L	R	V	W	Box Qty	Each
90412	6	4-4	8-14	4-14	8-8	75°C	165	.492	.625	.830	1.06	.413	.165	.722	100	
90414	4	4-4	6-14	4-14	8-8	75°C	165	.709	.812	1.04	1.24	.579	.268	.938	50	
90416	2	2-2	6-14	2-14	6-6	75°C	275	.748	.812	1.13	1.44	.614	.326	.938	50	
90418	1/0	1/0-1/0	2-14	1/0-14	4-4	75°C	385	.787	.937	1.25	1.73	.708	.374	1.08	50	
90420	2/0	2/0-2/0	1-14	2/0-14	2-2	75°C	385	.866	1.06	1.30	1.71	.807	.421	1.23	25	
90422	4/0	4/0-4/0	2-6	4/0-6		90°C	500	1.17	1.50	1.13	2.75	1.17	.560	1.73	30	
90424	350	350-350	1/0-4	350-4		90°C	650	1.66	1.68	1.48	2.99	1.50	.696	1.93	12	
90426	500	500-500	400-2	500-2		90°C	825	1.95	2.10	1.70	3.29	1.71	.850	2.30	12	

Aluminum Parallel Groove Clamps



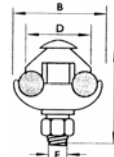
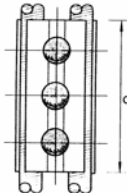
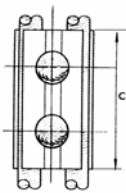
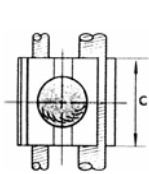
FIGURE 1



FIGURE 2



FIGURE 3



- Manufactured of extruded aluminum alloy thermally treated, this clamp offers high electrical conductivity, high strength and corrosion resistance
- The set screw, lock washer and nut is hot dip galvanized
- All sizes are packed in plastic bags and filled with antioxidant compound

Cat. No.	Figure	Main			Tap			Inches					Box Qty	Each
		CU-AL	ACSR	Wire diameter	Cu-AL	ACSR	Wire diameter	A	B	C	D	E		
96012	1	10-1/0	6-1/0	.102-.398	10-2	6-2	.102-.325	1.50	1.50	1.24	1.14	.394	50	
96016	1	10-2/0	6-1/0	.098-.417	10-2/0	6-1/0	.098-.417	1.50	1.50	1.24	1.14	.394	50	
96020	1	1/0-4/0	1/0-4/0	.373-.563	8-1/0	6-1/0	.128-.398	1.97	1.89	1.46	1.50	.394	50	
96022	2	1/0-4/0	1/0-4/0	.373-.563	8-1/0	6-1/0	.128-.398	1.97	1.89	2.91	1.50	.394	25	
96024	1	1/0-397.5	1/0-336.4	.373-.720	6-2/0	6-1/0	.162-.417	2.36	2.24	1.67	1.67	.394	50	
96026	2	1/0-397.5	1/0-336.4	.373-.720	6-2/0	6-1/0	.162-.417	2.36	2.24	2.91	1.67	.394	25	
96028	1	397.5-400	397.5	.728-.740	397.5-400	397.5	.728-.740	2.36	2.56	1.57	1.97	.472	50	
96030	2	397.5-400	397.5	.728-.740	397.5-400	397.5	.728-.740	2.36	2.56	3.15	1.97	.472	25	
96032	3	397.5-400	397.5	.728-.740	397.5-400	397.5	.728-.740	2.36	2.56	4.61	1.97	.472	15	