

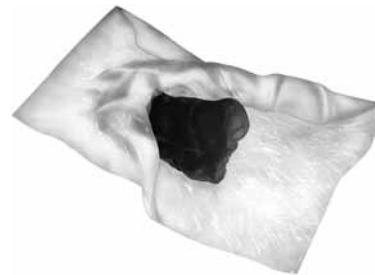
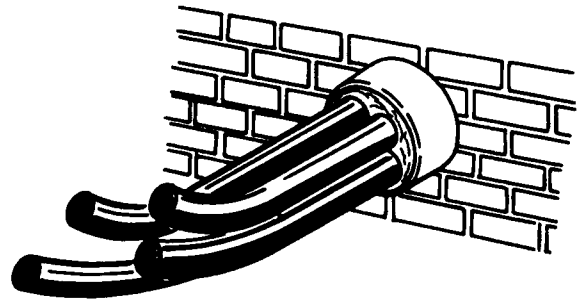


DISTRIBUTION CONNECTORS

DUCT SEALING COMPOUND TYPE DSC

| |
|---------|
| SEALING |
| DSC |

- Permanently pliable, non-cracking, caulking especially formulated for sealing cable and conduit entries, around junction boxes, service masts, etc. (A “must” material when sealing vault entries.) It can be easily shaped and worked by hand and when pressed in place, will cling to metal, plastic, rubber, painted surfaces, masonry, wood, etc. It is supplied in a convenient block shape overwrapped with release paper and bagged in a clear re-entry type PVC bag with application data.
- Dielectric strength approximately 110V/mil using ASTM D149-64.
- 100% non-volatile solids including non-drying synthetic polymers with inert mineral fibers.
- Asbestos free, non-toxic and non-irritating.
- Recommended working range when applying is 25°F to 120°F (-4°C to 49°C), tolerance range is -30°F to 175°F, (-34°C to 79°C). Will not sag at 275°F (135°C) when under such exposure for brief periods.
- Permanently pliable and non-cracking. May be painted immediately.



| CATALOG NUMBER | BLOCK SIZE | CARTON QUANTITY | APPROX. WT. 100 LBS. (KG) |
|----------------|------------|-----------------|---------------------------|
| DSC1 | 1 Pound | 50 Pounds | 100 (45) |
| DSC5 | 5 Pounds | 50 Pounds | 500 (226.8) |