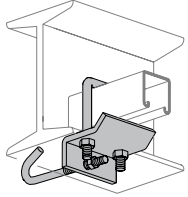


POWER-STRUT® Part No. Std Wt./ List Price
& Length Fin. Qty 100 per 100 pcs

PS 2656

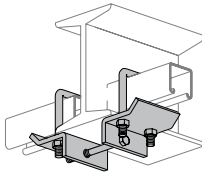
"U" Bolt beam Clamp With Hook
Specify 6" or 12" Max. Flange Width
T1 Use With PS 200, 210, 300, 400, 500, 520
T2 Use With PS 100, 150, 200 2T3



PS 2656 T1 6	EG	10	130	\$1592.45
PS 2656 T1 12	EG	10	142	\$1647.18
PS 2656 T2 6	EG	10	141	\$1654.09
PS 2656 T2 12	EG	10	153	\$1950.74
PS 2656 T3 6	EG	10	168	\$1654.09
PS 2656 T3 12	EG	10	168	\$1695.91

PS 2657

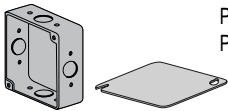
Double "U" Bolt beam Clamp" Specify 6" or 12" Max. Flange Width
T1 Use With PS 200, 210, 300,400, 500, 520
T2 Use With PS 100, 150, 200 2T3



PS 2657 T1 6	EG	6"	10	204	\$2966.31
PS 2657 T1 12	EG	12"	10	210	\$3067.46
PS 2657 T2 6	EG	6"	10	226	\$3255.37
PS 2657 T2 12	EG	12"	10	232	\$3359.51
PS 2657 T3 6	EG	6"	10	249	\$2965.36
PS 2657 T3 12	EG	12"	10	255	\$3086.33

PS 2660

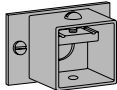
(Box), PS 2661 (Cover)
Junction Box With Cover



PS 2660	EG	Bulk	113	\$1938.26
PS 2661	EG	Bulk	30	\$485.11

PS 2662

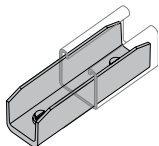
Hub Assembly
With Hardware



PS 2662 A	EG	1	27	\$1306.65
-----------	----	---	----	-----------

PS 2800

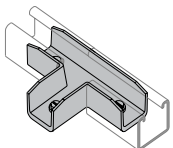
Inside Strut Joiner



PS 2800	AL	50	20	\$2112.46
PS 2800	EG	50	94	\$2112.46

PS 2801

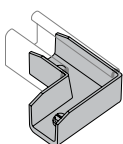
"T" Inside Strut Joiner



PS 2801	AL	20	35	\$3631.59
---------	----	----	----	-----------

PS 2802

"Elbow" Inside Strut Joiner

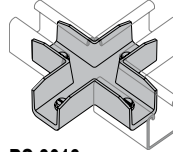


PS 2802	AL	25	27	\$3009.08
---------	----	----	----	-----------

POWER-STRUT® Part No. Std Wt./ List Price
& Length Fin. Qty 100 per 100 pcs

PS 2803

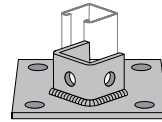
"Cross" Inside Strut Joiner



PS 2803	AL	25	45	\$4302.43
---------	----	----	----	-----------

PS 3013

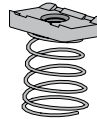
Single Column Base One Hole Attachment
Use With PS 200 and PS 210



PS 3013	EG	10	307	\$3430.10
PS 3013	GR	10	307	\$3430.10
PS 3013 SQ	EG	5	307	\$3334.93
PS 3013 SQ	GR	5	307	\$3334.93

PS 3017

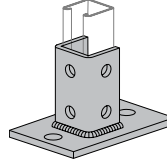
Junior Strut Nuts
Use With PS 600 J



PS 3017 8-32	EG	200	1	\$132.78
PS 3017 10-32	EG	200	1	\$132.78
PS 3017 10-24	EG	200	1	\$132.78
PS 3017 1/4-20	EG	200	1	\$132.78

PS 3025

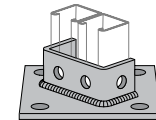
Post Base
Use With PS 200 and PS 210



PS 3025	EG	10	358	\$3055.51
PS 3025	GR	10	358	\$3055.51
PS 3025 FL	EG	10	358	\$2970.66
PS 3025 FL	GR	10	358	\$2970.66

PS 3029

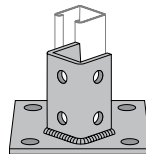
Double Column Post Base
Use With All 3 1/4" Channels



PS 3029	EG	5	325	\$3856.42
PS 3029	GR	5	325	\$3856.42

PS 3033

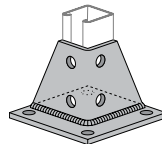
Post Base
Use With PS 200 and PS 210



PS 3033	EG	10	373	\$3407.17
PS 3033	GR	10	373	\$3312.40
PS 3033 SQ	EG	10	373	\$3407.17
PS 3033 SQ	GR	10	373	\$3312.40

PS 3040

Post Base
Use With PS 200 and PS 210



PS 3040	EG	10	297	\$3505.60
PS 3040	GR	10	297	\$3505.60