

ENCLOSURES

Concrete Enclosures

F7752

Wing Mounting Bracket for 20" Enclosure



F7752

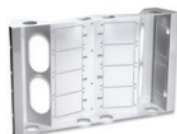
WING MOUNTING BRACKET FOR 20" ENCLOSURE

Bracket enables trim-out of concrete enclosure and allows mounting of 11 single-size modules. The mounting wing utilizes module knockouts to give the installation a finished and polished look.

Notes: 11.4" H x 14.2" W x 3.3" D

F7754

Large Wing Mounting Bracket for 26" and 36" Enclosures



F7754

LARGE WING MOUNTING BRACKET

The large wing for concrete construction enclosures is designed to mount all of your On-Q modules. Telephone, video, networking, camera and audio modules can all be mounted directly in the single size module spaces.

Notes: 11.3" H x 18.9" W x 3.2" D

PART NO.	PRODUCT	DESCRIPTION	DIMENSIONS
F8030	Hinged Cover for 20" Enclosure	Durable hinged metal cover protects the contents of the 20" enclosure.	22" H x 17" W
F8032	Hinged Cover for 36" Enclosure	Hinged metal cover protects the 36" enclosure.	39" H x 22" W
F8033	Hinged Cover for 26" Enclosure	Hinged metal cover protects the 26" enclosure.	29" H x 22" W
F2242	2.5" Grommet Ring	Increases wire protection in enclosure cable openings.	N/A

