

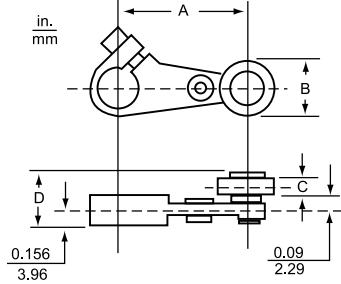
Lever Arms for 9007AW and 9007C Heavy Duty / Industrial Limit Switches

Standard roller is hardened oil-impregnated sintered iron. Bold-face Type numbers indicate the most commonly used lever arms.

Table 21.58: Cast Zinc Lever Arms

Cast Lever Arm	Length of Arm (A)	Roller							
		Standard 3/4" Dia. (B) 1/4" Wide (C)	Standard 3/4" Dia. (B) 5/8" Wide (C)	Standard 5/8" Dia. (B) 1/4" Wide (C)	Standard 5/8" Dia. (B) 5/8" Wide (C)	Nylon 3/4" Dia. (B) 1/4" Wide (C)	Nylon 5/8" Dia. (B) 1/4" Wide (C)	Nylon 5/8" Dia. (B) 5/8" Wide (C)	Nylon [8] 1" Dia. (B) 5/8" Wide (C)
		Type	Type	Type	Type	Type	Type	Type	Type
	7/8"	—	—	AA1	AA2	—	AA8	AA17	—
	1-3/8"	BA11	BA12	BA1	BA2	BA18	BA8	BA17	BA13
	1-1/2"	MA11	MA12	MA1	MA2	MA18	MA8	MA17	MA13
	2"	CA11	CA12	CA1	CA2	CA18	CA8	CA17	CA13
	2-1/2"	DA11	DA12	DA1	DA2	DA18	DA8	DA17	DA13
	3"	EA11	EA12	EA1	EA2	EA18	EA8	EA17	EA13
Length of Arm (A)	Nylon 1" Dia. (B) 1/4" Wide (C)	Ball Bearing 11/16" Dia. (B) 1/4" Wide (C)	Standard 3/4" Dia. (B) 1/4" Wide (C) Roller on Opposite Side to Standard	Standard 5/8" Dia. (B) 1/4" Wide (C) Roller on Opposite Side to Standard	Standard 5/8" Dia. (B) 5/8" Wide (C) Roller on Opposite Side to Standard	Without Roller	Standard 3/4" Dia. (B) 1/4" Wide (C) (Countersunk Roller Pin)	Cable Operated With Eyebolt (3/8" I.D.) Instead of Roller	
	Type	Type	Type	Type	Type	Type	Type	Type	Type
7/8" 1-3/8" 1-1/2" 2" 2-1/2" 3"	—	AA9	—	AA5	AA6	AA0	—	—	
	BA4	BA9	BA15	BA5	BA6	BA0	—	—	
	MA4	MA9	MA15	MA5	MA6	MA0	MA31	MA22	
	CA4	CA9	CA15	CA5	CA6	CA0	CA31	—	
	DA4	DA9	DA15	DA5	DA6	DA0	DA31	—	
	EA4	EA9	EA15	EA5	EA6	EA0	—	—	

Cast Zinc Lever Arm Dimensions



A = Length of Lever Arm
B = Roller Diameter
C = Roller Width
D = C + 5/16"

See the tables in this topic for A, B, and C dimensions.

Table 21.59: Flat Steel Lever Arms

Flat Steel Lever Arm	Length of Arm (A)	Standard Roller 5/8" Dia. (B) 1/4" Wide (C)	Standard Roller 5/8" Dia. (B) 5/8" Wide (C)	Nylon Roller 3/4" Dia. (B) 1/4" Wide (C)	Nylon Roller 1" Dia. (B) 1/4" Wide (C)	No Roller
		Type	Type	Type	Type	Type
	7/8"	AA1S	AA2S	—	—	AA0S
	1-3/8"	BA1S	BA2S	—	BA4S	BA0S
	1-1/2"	—	—	MA18S	—	—
	2"	CA1S	CA2S	—	CA4S	CA0S
	2-1/2"	DA1S	DA2S	—	DA4S	DA0S
	3"	EA1S	EA2S	—	EA4S	EA0S

Table 21.60: 90° Forked Cast Zinc Lever Arms

90° Forked Arm 1-1/2" Length	Roller Position	Standard Rollers 3/4" Dia. (B) 1/4" Wide (C)	Standard Rollers 5/8" Dia. (B) 1/4" Wide (C)	Nylon Rollers 3/4" Dia. (B) 1/4" Wide (C)	Nylon Rollers 3/4" Dia. (B) 1" Wide (C)	Ball Bearing Rollers 11/16" Dia. (B) 1/4" Wide (C)
		Type	Type	Type	Type	Type
	Rollers on Same Side	LA4	LA1	LA16	LA10	LA7
	R.H. Roller on Opposite Side	LA5	LA2	LA17	LA11	LA8
	L.H. Roller on Opposite Side	LA6	LA3	LA18	LA12	LA9

Approximate shipping weights range from 1/8 to 1/4 lb.

Table 21.61: One-Way Cast Zinc Roller Lever Arm

One-Way Roller Lever Arm	Length of Arm	Roller, 1-1/4" Dia. (B) 1/4" Wide (C)	
		Cast Arm Type	Flat Steel Arm Type
	1-3/8"	BA3	BA3S
	1-1/2"	MA3	—
	2"	CA3	CA3S
	2-1/2"	DA3	DA3S
	3"	EA3	EA3S

Table 21.62: Offset-style Cast Zinc Lever Arms

Offset Lever Arm	Dia. (B)	Width (C)	Type
			Standard Roller
2" Length 7/16" Offset	5/8	1/4	KA1
	5/8	5/8	KA2
	3/4	1/4	KA11
	3/4	5/8	KA12
	Ball Bearing		
	11/16	1/4	KA9
	Nylon		
	3/4	1/4	KA18
1-1/2" Length 7/8" Offset	3/4	1	KA21
	Standard Roller		
	3/4	1/4	KB11
	3/4	1/4	KB15 [9]

Table 21.63: One-Way Lever Arms

One-Way Lever Arm	Length of Arm	Roller			Rod Type
		Standard 3/4" Dia. (B) 1/4" Wide (C)	Nylon 3/4" Dia. (B) 1/4" Wide (C)	Ball Bearing 1-1/16" Dia. (B) 1/4" Wide (C)	
		Type	Type	Type	Type
	1-1/2"	RA11	RA18	RA9	—
	5"	—	—	—	FA2

Table 21.64: Rod Type Lever Arms

Rod, in. (mm)	Type
10 (254) Stainless Steel Rod	FA1
12 (304) Spring Rod, Steel	FA3
18 (304) Spring Rod, Steel	FA4
12 Spring Rod, Delrin	FA5
Looped Delrin Rod	FA6
90° Forked Rod	
2-1/2" Spring Rods, Steel	LA19

Dimensions page 21-35
For more information on LA19, refer to catalog 9006CT1007.

[8] Recommended in place of Types BA7, CA7, DA7, EA7 and MA7 lever arms with steel rollers. If necessary, the latter arms can be furnished at an additional cost.

[9] Roller inside.