

SmartBox

Think Inside the Box

The new 2-6 gang Multi Mount device boxes are a hybrid “take offs” of the original 1-4 gang Smart Boxes. These products offer additional built in features such as removable nail tabs used for metal stud mounting, removable interior mounting blocks to allow for more cubic inch in the box, built in mounting blocks on the top end of the box for vertical mounting, ½ inch knock outs for blue tube or PVC conduit connections, and finally low voltage wall dividers to allow for mixed voltages in the same box. The result of these added features creates an even more user friendly device box to meet the ever growing demands on the electrician in the field.

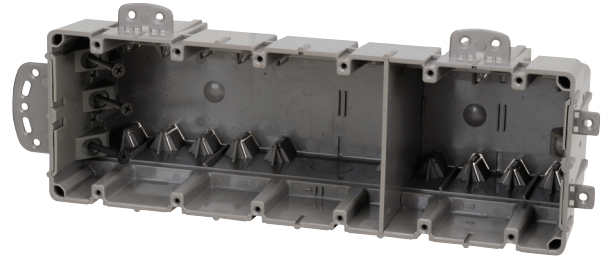
FEATURES & BENEFITS

- Available in 2, 5 and 6 gang.
- Largest volume offered in device boxes.
- Heavy duty mounting screws supplied.
- Vertical and horizontal mounting.
- UL approved for single screw mounting, extra support bar not required.
- Extra thick wall material creates stability and rigidity in product.
- Use for flat screen TV applications and home theatre centers.

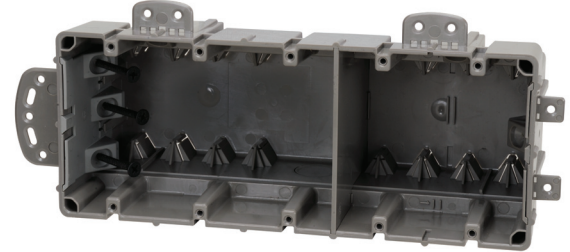
SPECIFICATIONS

Item#	Description	Inner Carton	Master Carton	Trade Size	Cubic Inch	Weight	UPC
MSBMMT2G	2 Gang Multi Mount Box	N/A	30	2 Gang	37	NA / 13lbs.	50784297017716
MSBMMT5G	5 Gang Multi Mount Box	5	20	5 Gang	91.5	5lbs. / 17lbs.	30784297017743
MSBMMT6G	6 Gang Multi Mount Box	5	20	6 Gang	110	5.07lbs. / 18lbs.	30784297017750

MSBMMT6G



MSBMMT5G



MSBMMT2G

