

# Cord Grip Connectors

## Type CGA

### Straight Strain Relief

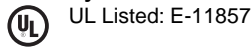
#### Features:

- Tapered threaded male hub NPT
- Watertight/Oiltight
- With Neoprene grommets
- Rated at 90°C

#### Material/Finish:

Copper Free Aluminum

#### Third Party Certification:

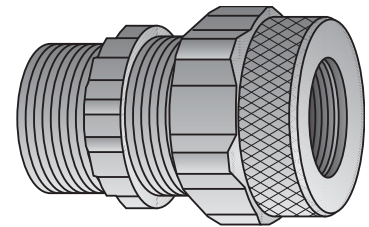
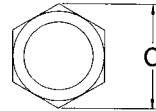
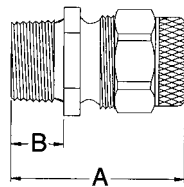


#### Applicable Third Party Standards:

UL Standard: 514B  
 CSA Standard: C22.2 No. 18  
 Fed. Spec.: Commercial Item Description  
 A-505-52

#### Note:

Consult your local representative for cable ranges not listed or multi-hole applications.



Type CGA-38

Catalog Number	Dimensions in Inches			Dimensions in Inches		
	Cable Range Dia. Over Jacket Min. Max.	Hub Size	Throat I.D.	A Body Length	B Thread Length	C Max. Dia.
CGA-38-188	0.125 - 0.188	3/8	0.46	1 1/2	7/16	1
CGA-38-250	0.188 - 0.250	3/8	0.46	1 1/2	7/16	1
CGA-38-312	0.250 - 0.312	3/8	0.46	1 1/2	7/16	1
CGA-38-375	0.312 - 0.375	3/8	0.46	1 1/2	7/16	1
CGA-38-438	0.375 - 0.438	3/8	0.46	1 1/2	7/16	1
CGA-50-188	0.125 - 0.188	1/2	0.58	1 13/16	1/2	1 5/16
CGA-50-250	0.188 - 0.250	1/2	0.58	1 13/16	1/2	1 5/16
CGA-50-312	0.250 - 0.312	1/2	0.58	1 13/16	1/2	1 5/16
CGA-50-375	0.312 - 0.375	1/2	0.58	1 13/16	1/2	1 5/16
CGA-50-438	0.375 - 0.438	1/2	0.58	1 13/16	1/2	1 5/16
CGA-50-500	0.438 - 0.500	1/2	0.58	1 13/16	1/2	1 5/16
CGA-50-562	0.500 - 0.562	1/2	0.58	1 13/16	1/2	1 5/16
CGA-50-625	0.562 - 0.625	1/2	0.58	1 13/16	1/2	1 5/16
CGA-75-562	0.438 - 0.562	3/4	0.81	2 1/16	9/16	1 1/2
CGA-75-625	0.500 - 0.625	3/4	0.81	2 1/16	9/16	1 1/2
CGA-75-688	0.562 - 0.688	3/4	0.81	2 1/16	9/16	1 1/2
CGA-75-750	0.625 - 0.750	3/4	0.81	2 1/16	9/16	1 1/2
CGA-75-812	0.688 - 0.812	3/4	0.81	2 1/16	9/16	1 1/2
CGA-100-562	0.438 - 0.562	1	1	2 5/16	5/8	1 11/16
CGA-100-625	0.500 - 0.625	1	1	2 5/16	5/8	1 11/16
CGA-100-688	0.562 - 0.688	1	1	2 5/16	5/8	1 11/16
CGA-100-750	0.625 - 0.750	1	1	2 5/16	5/8	1 11/16
CGA-100-812	0.688 - 0.812	1	1	2 5/16	5/8	1 11/16
CGA-100-875	0.750 - 0.875	1	1	2 5/16	5/8	1 11/16
CGA-100-938	0.812 - 0.938	1	1	2 5/16	5/8	1 11/16
CGA-125-875	0.750 - 0.875	1 1/4	1.31	2 3/4	1 1/16	2 1/2
CGA-125-1000	0.875 - 1.000	1 1/4	1.31	2 3/4	1 1/16	2 1/2
CGA-125-1125	1.000 - 1.125	1 1/4	1.31	2 3/4	1 1/16	2 1/2
CGA-125-1250	1.125 - 1.250	1 1/4	1.31	2 3/4	1 1/16	2 1/2
CGA-125-1375	1.250 - 1.375	1 1/4	1.31	2 3/4	1 1/16	2 1/2
CGA-150-875	0.750 - 0.875	1 1/2	1.5	2 3/4	1 1/16	2 1/2
CGA-150-1000	0.875 - 1.000	1 1/2	1.5	2 3/4	1 1/16	2 1/2
CGA-150-1125	1.000 - 1.125	1 1/2	1.5	2 3/4	1 1/16	2 1/2
CGA-150-1250	1.125 - 1.250	1 1/2	1.5	2 3/4	1 1/16	2 1/2
CGA-150-1375	1.250 - 1.375	1 1/2	1.5	2 3/4	1 1/16	2 1/2
CGA-200-1375	1.250 - 1.375	2	1.84	3 3/4	1 3/16	3 1/4
CGA-200-1562	1.438 - 1.562	2	1.84	3 3/4	1 3/16	3 1/4
CGA-200-1688	1.562 - 1.688	2	1.84	3 3/4	1 3/16	3 1/4
CGA-200-1812	1.688 - 1.812	2	1.84	3 3/4	1 3/16	3 1/4