

## FEATURES & SPECIFICATIONS

**INTENDED USE** — The industry's next generation in linear direct fluorescent products. This new compact, low-profile design offers our customers unique product features which improve the overall installation process and appearance while reducing labor cost, making it the most versatile solution for commercial, retail, manufacturing, warehouse, and cove and display applications.

**ATTRIBUTES** — Designed to accommodate a wide variety of T8 lamp lengths. Channel offers the gripper back feature which strengthens the overall construction and allows for the use of the new Z spring hanger (see back). Newly designed, patent-pending channel cover offers a secure fit design, allowing for easy access and quick attachment without pinching wires.

**CONSTRUCTION** — Constructed to comply with New York City electric code. Made in USA.

Compact designed channel and cover are formed from code-gauge cold-rolled steel. Innovative T8 two-lamp back plate offers compact design and additional socket protection. Locking lamp holder tracks bolsters strength of the overall strip construction while creating improved lamp stability. Design includes T8 socket, features rotating collar and enclosed contacts.

**FINISH** — High-gloss, baked white enamel finish (white standard). Five-stage iron-phosphate pretreatment ensures superior paint adhesion and rust resistance. Other channel paint finish options: black (MB), smoke gray (SMG) and galvanized (GALV).

**OPTICAL** — Reflector options include solid designs in both symmetric and asymmetric configurations. Consult factory for different-apertured versions.

**ELECTRICAL SYSTEM** — Thermally protected, resetting, Class P, HPF, non-PCB, UL listed.

Suitable for damp locations. AWN, TFN or THHN wire used throughout, rated for required temperatures.

**INSTALLATION** — Patented-pending "three-point" row connector locks channel together for straighter and faster row mounting; included as standard. Ideal for surface-mount or suspended.

**LISTING** — UL Listed, CUL Listed or CSA Certified to Canadian Standards.

**WARRANTY** — 1-year limited warranty. Complete warranty terms located at:

[www.acuitybrands.com/CustomerResources/Terms\\_and\\_conditions.aspx](http://www.acuitybrands.com/CustomerResources/Terms_and_conditions.aspx)

**Note:** Actual performance may differ as a result of end-user environment and application.

Specifications subject to change without notice.

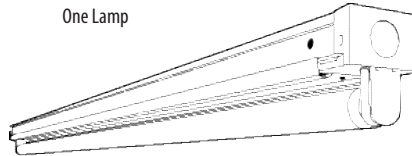
Catalog Number	
Notes	Type



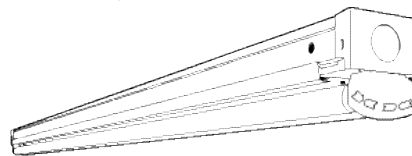
Compact T8 Striplight

# Z NY

Linear Lamps  
1 or 2 Lamps



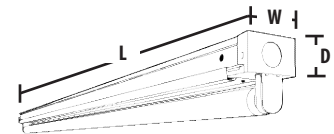
One Lamp



Two Lamps

	Specifications
Length:	18 (45.7), 24 (61.0) 36 (91.4), 48 (121.9) 72 (182.9) or 96 (243.8)
Width:	2-1/8 (5.4)
Depth:	1-1/2 (3.8)

All dimensions are inches (millimeters).



## ORDERING INFORMATION

For shortest lead times, configure product using **standard options (shown in bold)**.

Example: Z 1 32 MVOLT GEB10IS

Series	Number of lamps	Lamp type	Voltage	Options
<b>Z Compact strip<sup>1</sup></b>	<b>1</b> 2 Not included	17 17W T8 (24") 25 25W T8 (36") <b>32 32W T8 (48")</b>	120 277 347 <b>MVOLT</b> Others available	<b>GEB10IS T8 electronic ballast, ≤ 10% THD, instant start (T8 only)</b> GEB10RS T8 electronic ballast, ≤ 10% THD, rapid start GLR Internal fast-blow fuse (add X for external) GMF Internal slow-blow fuse (add X for external) PLF Plug in wiring, specify number of branch circuits and hot wires (A-black, B-Red, C-Blue, AB or AC) EL55 Emergency battery pack (nominal 390-700 lumens); consult factory for additional battery packs <sup>2,3</sup> EL65 Emergency battery pack (nominal 725-1325 lumens) CSA CSA Certified NOM NOM Certified <b>NY I.B.E.W. union made, NYC code compliant</b>

For tandem double-length unit, add prefix T. Example: TZ

### Accessories

Order as separate catalog numbers.

SQ_	Swivel-stem hanger (specify length in 2" increments)
ZSPRG	Tong and T-grid hanger
Z8SMR48	Symmetric reflector, 4' white
Z8ASR48	Asymmetric reflector, 4' white
Z8SMR36	Symmetric reflector, 3' white
Z8ASR36	Asymmetric reflector, 3' white
Z8SMR24	Symmetric reflector, 2' white
Z8ASR24	Asymmetric reflector, 2' white
WGZ48	4' wireguard, white
WGZ8SMR48	4' wireguard, white, for symmetric reflector
WGZ8ASR48	4' wireguard, white, for asymmetric reflector
MSSACF_	Adjustable aircraft cable system with power feed (specify length as 36, 72 or 108 inches)
MSSAC_	Adjustable aircraft cable system (specify 36, 72 or 108 inches)

### NOTES:

- Order two 48" for 8' fixtures.
- Specify voltage (available 120/277V).
- Not available with CSA Certified.

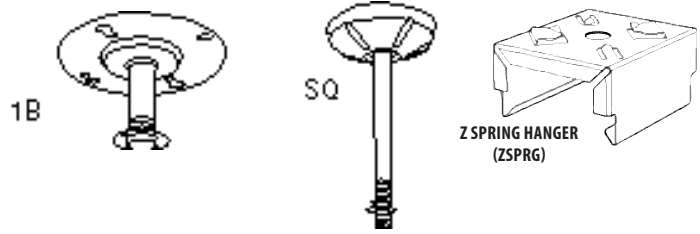
# Z Compact Striplight

## MOUNTING DATA

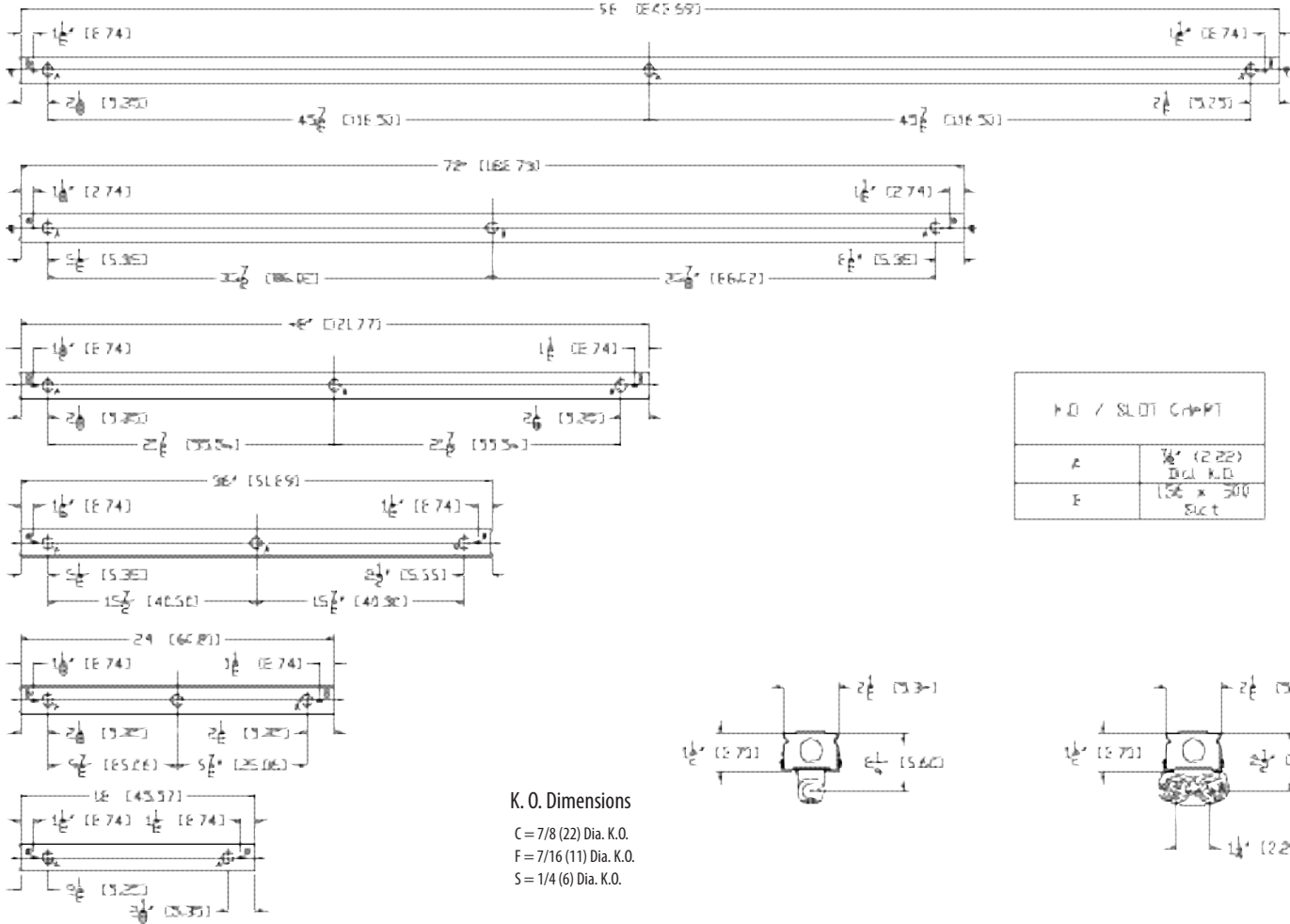
For unit or row installation, surface or stem mounting.

Unit installation — Minimum of two hangers required.

Row installation — One hanger per channel plus one per row required.

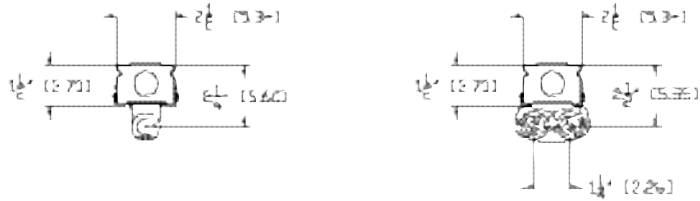


## DIMENSIONS



H.O. / SLOT CAPPT	
A	3/8" (2.22) Incl. H.O.
E	1.56" x 3.00" Slot

**K. O. Dimensions**  
 C = 7/8 (22) Dia. K.O.  
 F = 7/16 (11) Dia. K.O.  
 S = 1/4 (6) Dia. K.O.



## PHOTOMETRICS

Calculated using the zonal cavity method in accordance with IESNA LM41 procedure. Floor reflectances are 20%. Lamp configurations shown are typical. Full photometric data on these and other configurations available upon request.

TEST NO. LTL17126  
 LUMINAIRE CATALOG NO. Z 1 32 MVOLT GEE101E  
 LUMENS PER LAMP: 2600

TEST NO. LTL17130  
 LUMINAIRE CATALOG NO. Z 2 32 MVOLT GEE101E  
 LUMENS PER LAMP: 2600

d/pc	Coefficients of Utilization					
	80%		70%		50%	
	50%	30%	10%	50%	30%	10%
C	107	107	107	102	102	102
1	27	82	77	82	76	74
2	74	66	60	70	65	67
3	54	56	46	61	62	46
4	66	47	40	55	46	36
E	45	40	22	47	35	32
6	24	35	29	42	34	26
7	40	31	26	38	30	24
8	36	26	22	34	27	21
9	32	26	15	21	24	15
10	30	22	17	22	22	16

d/pc	Coefficients of Utilization					
	80%		70%		50%	
	50%	30%	10%	50%	30%	10%
C	100	100	100	95	95	95
1	54	79	75	79	76	71
2	71	64	59	69	62	56
3	62	54	47	55	51	46
4	54	48	39	51	44	36
E	46	36	22	46	38	32
6	43	34	29	41	33	26
7	38	30	25	37	29	24
8	35	27	22	33	25	21
9	32	24	15	30	24	15
10	29	22	17	28	21	16

Zonal Lumen Summary

Zone	Lumens	% Lamp	% Fixture
0° - 30°	36.4	12.7	12.8
0° - 40°	60.3	21.6	22.9
0° - 50°	1196.2	42.6	48.8
0° - 90°	2228.3	72.6	77.1
90° - 180°	802.8	21.6	22.5
0° - 180°	2632.2	84.2	100.0

Zonal Lumen Summary

Zone	Lumens	% Lamp	% Fixture
0° - 30°	723.3	12.5	14.8
0° - 40°	1280.3	22.0	24.8
0° - 50°	2402.0	42.5	45.4
0° - 90°	3745.6	68.9	76.5
90° - 180°	1215.1	21.7	24.8
0° - 180°	4963.7	96.6	100.0



Z-T8-NY