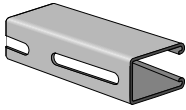




Part No. & Length Fin. Std Qty Wt./100 List Price per 100 ft.

PS 150 S

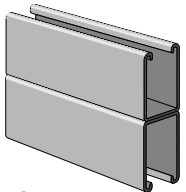
1 5/8" x 2 7/16" x 12 Ga. Channel
With 1 3/32" x 3" Slots On 4" Centers



PS 150 S 10	GR	400'	242	\$1160.98
PS 150 S 10	PG	400'	242	\$1223.57
PS 150 S 10	PL	400'	242	\$1037.83
PS 150 S 20	GR	400'	242	\$1160.98
PS 150 S 20	PG	400'	242	\$1223.57
PS 150 S 20	PL	400'	242	\$1037.83

PS 150 2T3

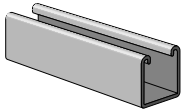
Welded Channel
Two Pcs. PS 150 Welded Back To Back 1 5/8" x 4 7/8" x 12 Ga.



PS 150 2T3 10	GR	200'	484	\$1977.10
PS 150 2T3 10	PG	200'	484	\$2126.31
PS 150 2T3 10	PL	200'	484	\$1940.43
PS 150 2T3 20	GR	200'	484	\$1977.10
PS 150 2T3 20	PG	200'	484	\$2126.31
PS 150 2T3 20	PL	200'	484	\$1940.43

PS 200

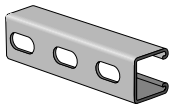
1 5/8" x 1 5/8" x 12 Ga. Channel



PS 200 10	GR	500'	190	\$531.94
PS 200 10	PG	500'	190	\$544.04
PS 200 10	AL	500'	70	P.O.A.
PS 200 10	PL	500'	190	\$492.17
PS 200 20	GR	500'	190	\$531.94
PS 200 20	PG	500'	190	\$544.04
PS 200 20	AL	500'	70	P.O.A.
PS 200 20	PL	500'	190	\$492.17

PS 200 EH

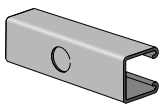
1 5/8" x 1 5/8" With 1 1/8" x 9/16" Elongated Holes On 2" Centers



PS 200 EH 10	GR	500'	185	\$593.01
PS 200 EH 10	PG	500'	185	\$604.58
PS 200 EH 10	AL	500'	67	P.O.A.
PS 200 EH 10	PL	500'	185	\$575.94
PS 200 EH 20	GR	500'	185	\$593.01
PS 200 EH 20	PG	500'	185	\$604.58
PS 200 EH 20	AL	500'	67	P.O.A.
PS 200 EH 20	PL	500'	185	\$575.94

PS 200 KO6

1 5/8" x 1 5/8" With 7/8" Knock Outs On 6" Centers



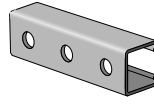
PS 200 KO6 10	GR	500'	190	\$620.18
PS 200 KO6 10	PG	500'	190	\$644.76
PS 200 KO6 10	PL	500'	190	\$586.25
PS 200 KO6 20	GR	500'	190	\$620.18
PS 200 KO6 20	PG	500'	190	\$644.76
PS 200 KO6 20	PL	500'	190	\$586.25



Part No. & Length Fin. Std Qty Wt./100 List Price per 100 ft.

PS 200 H

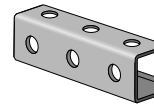
1 5/8" x 1 5/8" With 9/16" Holes On 1 7/8" Centers



PS 200 H 10	GR	500'	186	\$612.86
PS 200 H 10	PG	500'	186	\$615.86
PS 200 H 10	AL	500'	69	P.O.A.
PS 200 H 10	PL	500'	186	\$586.25
PS 200 H 20	GR	500'	186	\$612.86
PS 200 H 20	PG	500'	186	\$615.86
PS 200 H 20	AL	500'	69	P.O.A.
PS 200 H 20	PL	500'	186	\$586.25

PS 200 H3

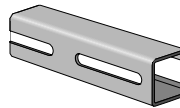
1 5/8" x 1 5/8" With 9/16" Holes On 1 7/8" Centers



PS 200 H3 10	GR	500'	175	\$845.45
PS 200 H3 10	PG	500'	175	\$872.05
PS 200 H3 10	PL	500'	175	\$777.69
PS 200 H3 20	GR	500'	175	\$845.45
PS 200 H3 20	PG	500'	175	\$872.05
PS 200 H3 20	PL	500'	175	\$777.69

PS 200 S

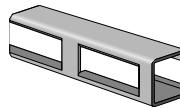
1 5/8" x 1 5/8" With 1 3/32" x 3" Slots On 4" Centers



PS 200 S 10	GR	500'	185	\$599.15
PS 200 S 10	PG	500'	185	\$623.87
PS 200 S 10	AL	500'	67	P.O.A.
PS 200 S 10	PL	500'	185	\$588.97
PS 200 S 20	GR	500'	185	\$599.15
PS 200 S 20	PG	500'	185	\$623.87
PS 200 S 20	AL	500'	67	P.O.A.
PS 200 S 20	PL	500'	185	\$588.97

PS 200 SB

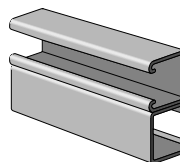
Channel With Slotted Back
With 7/8" x 3 1/2" Slots On 4 1/2" Centers 1 5/8" x 1 5/8" x 12 Ga.



PS 200 SB 10	GR	500'	173	\$710.08
PS 200 SB 10	PG	500'	173	\$764.67
PS 200 SB 10	PL	500'	173	\$676.68
PS 200 SB 20	GR	500'	173	\$710.08
PS 200 SB 20	PG	500'	173	\$764.67
PS 200 SB 20	PL	500'	173	\$676.68

PS 200 2T2

Welded Channel
Two Pcs. Welded Side To Opposite Side 1 5/8" x 3 1/4" x 12 Ga.



PS 200 2T2 10	GR	250'	380	\$1787.69
PS 200 2T2 10	PG	250'	380	\$1946.27
PS 200 2T2 10	PL	250'	380	\$1584.45
PS 200 2T2 20	GR	300'	380	\$1787.69
PS 200 2T2 20	PG	300'	380	\$1946.27
PS 200 2T2 20	PL	300'	380	\$1584.45