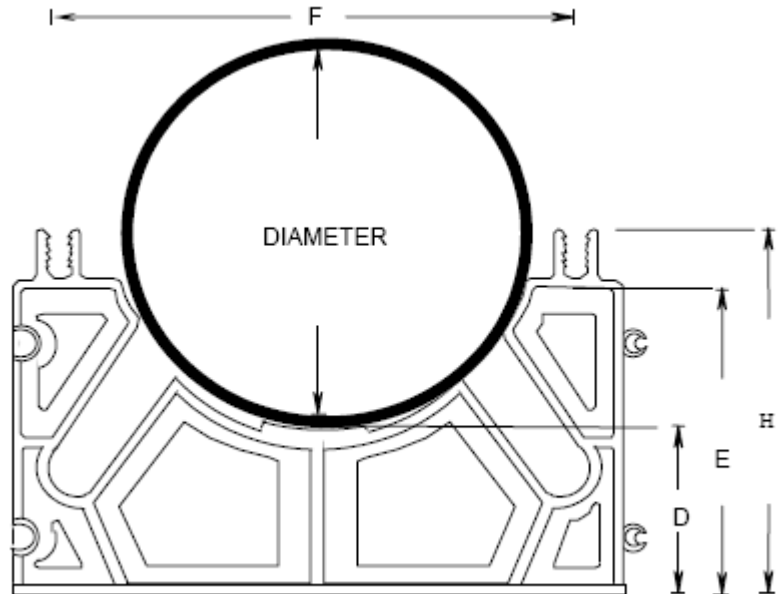


ABS FITTINGS

ISSUE DATE:  
DATE D'EMISSION: 2009 09 15

LOK Spacers BVL

SUPERCEDES:  
REPLACE: 2008 08 15



PROD. CODE	Product Description	Pipe Dia.	A (Ref)		D (Ref)		E (Ref)		F (Ref)		H (Ref)	
			(in)	(mm)	(in)	(mm)	(in)	(mm)	(in)	(mm)	(in)	(mm)
29566	2 X 1 1/2" Duct Spacer	50	3.937	100	2.992	76	3.740	95	3.189	81	4.252	108
29567	2 X 2" Duct Spacer	50	4.488	114	2.992	76	3.740	95	3.465	88	4.252	108
29568	2 X 3" Duct Spacer	50	5.433	138	2.992	76	3.740	95	3.976	101	4.252	108
29570	3 X 2" Duct Spacer	75	5.630	143	2.992	76	4.252	108	4.646	118	4.764	121
29571	3 X 3" Duct Spacer	75	6.614	168	2.992	76	4.291	109	5.118	130	4.803	122
29573	4 X 1 1/2" Duct Spacer	50	6.614	168	2.992	76	4.843	123	5.433	138	5.315	135
29574	4 X 2" Duct Spacer	100	6.614	168	2.992	76	4.843	123	5.630	143	5.354	136
29575	4 X 3" Duct Spacer	100	7.638	194	2.992	76	4.843	123	6.142	156	5.394	137
29577	5 X 2" Duct Spacer	125	7.874	200	2.992	76	5.394	137	6.890	175	5.945	151
29578	5 X 3" Duct Spacer	125	8.701	221	2.992	76	5.472	139	7.205	183	5.984	152
29579	6 X 1 1/2" Duct Spacer	150	7.441	189	3.031	77	6.378	162	7.441	189	6.378	162
29580	6 X 2" Duct Spacer	150	7.677	195	3.031	77	6.378	162	7.441	189	6.378	162
29581	6 X 3" Duct Spacer	150	9.764	248	2.992	76	5.827	148	8.268	210	6.378	162