

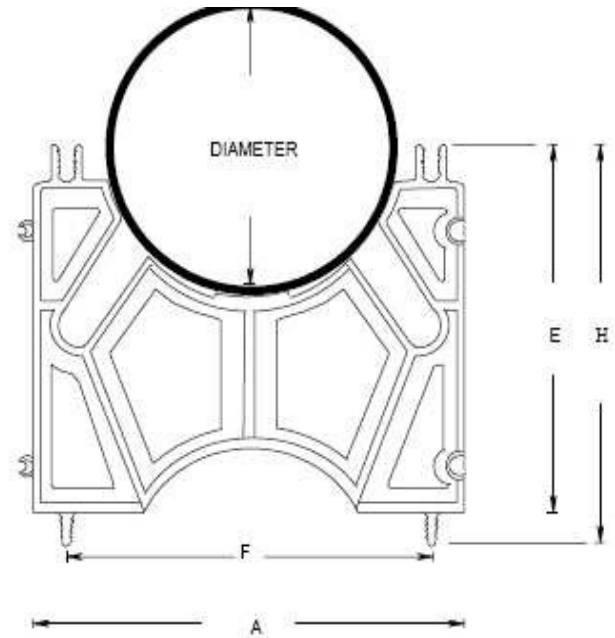
ABS FITTINGS

ISSUE DATE:  
DATE D'EMISSION: 2009 09 15

LOK Spacers IVL

SUPERCEDES:  
REPLACE: 2008 08 15

4



PROD. CODE	Product Description	Pipe Dia.	A (Ref)		E Ref		F Ref		H Ref	
			(in)	(mm)	(in)	(mm)	(in)	(mm)	(in)	(mm)
29550	2 X 1 1/2" Duct Spacer	50	3.937	100	3.425	87	3.937	100	4.488	114
29551	2 X 2" Duct Spacer	50	4.488	114	3.937	100	4.488	114	5.000	127
29552	2 X 3" Duct Spacer	50	5.433	138	4.921	125	5.433	138	5.984	152
29554	3 X 2" Duct Spacer	75	5.630	143	5.079	129	4.921	125	6.142	156
29555	3 X 3" Duct Spacer	75	6.614	168	6.614	168	5.118	130	7.165	182
29557	4 X 1 1/2" Duct Spacer	50	6.614	168	6.102	155	6.614	168	6.654	169
29558	4 X 2" Duct Spacer	100	6.614	168	6.102	155	6.614	168	7.165	182
29559	4 X 3" Duct Spacer	100	7.638	194	7.087	180	7.638	194	8.150	207
29561	5 X 2" Duct Spacer	125	7.874	200	7.362	187	6.850	174	8.425	214
29562	5 X 3" Duct Spacer	125	8.701	221	8.150	207	7.205	183	9.213	234
29563	6 X 1 1/2" Duct Spacer	150	7.441	189	6.378	162	7.441	189	8.740	222
29564	6 X 2" Duct Spacer	150	7.677	195	6.378	162	7.677	195	9.252	235
29565	6 X 3" Duct Spacer	150	9.764	248	9.213	234	8.268	210	10.276	261