

# TRANSMISSION CONNECTORS

## HARDWARE FITTINGS

### DUCTILE IRON

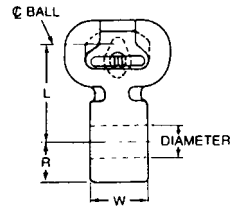
### SOCKET EYE



T12

DUCTILE IRON

SA



Socket eyes can be used for connecting conductor clamping devices to ball and socket type insulators.

Material: Body—ductile iron, galvanized  
Cotter Pin—stainless steel

CATALOG NUMBER	ULTIMATE STRENGTH LBS. (KG)	DIMENSIONS INCHES (MM)				APPROX. WT. EACH LBS. (KG)
		W	R	L	DIA.	
SA04	18,000 (8,165)	1/2 (12.70)	13/16 (20.64)	2-1/16 (52.39)	11/16 (17.46)	1.25 (.57)
SA049	20,000 (9,072)	1/2 (12.70)	13/16 (20.64)	3-1/4 (82.55)	9/16 (14.29)	1.28 (.58)
SA05	20,000 (9,072)	5/8 (15.88)	13/16 (20.64)	2-1/16 (52.39)	11/16 (17.46)	1.25 (.57)
SA06	25,000 (11,340)	3/4 (19.05)	13/16 (20.64)	2-1/16 (52.39)	11/16 (17.46)	1.30 (.59)
936032000	27,000 (12,247)	3/4 (19.05)	1 (25.40)	3 (76.20)	13/16 (20.64)	2.2 (1.00)
SA07	30,000 (13,608)	7/8 (22.23)	13/16 (20.64)	2-1/16 (52.39)	11/16 (17.46)	1.35 (.61)
SA10	30,000 (13,608)	1 (25.40)	13/16 (20.64)	2-1/16 (52.39)	11/16 (17.46)	1.40 (.64)
SA10054	30,000 (13,608)	1 (25.40)	13/16 (20.64)	5-1/2 (139.70)	11/16 (17.46)	1.90 (0.86)
SA11	30,000 (13,608)	1-1/8 (28.58)	13/16 (20.64)	2-1/16 (52.39)	11/16 (17.46)	1.50 (.68)
936062000	30,000 (13,608)	1-1/4 (31.75)	1 (25.40)	3 (76.20)	1-1/16 (26.99)	2.3 (1.04)
936063002	30,000 (13,608)	1-1/4 (31.75)	1 (25.40)	3 (76.20)	1-3/16 (30.16)	2.3 (1.04)
SA13	30,000 (13,608)	1-3/8 (34.93)	13/16 (20.64)	2-1/16 (52.39)	11/16 (17.46)	1.70 (.77)
SA13054	30,000 (13,608)	1-3/8 (34.93)	13/16 (20.64)	5-1/2 (139.70)	11/16 (17.46)	2.00 (0.91)
*SA1550	50,000 (22,680)	1-5/8 (41.28)	1 (25.40)	3-9/32 (83.34)	1-1/16 (26.99)	3.00 (1.36)
*SA15501	30,000 (13,608)	1-5/8 (41.28)	1 (25.40)	3-9/32 (83.34)	11/16 (17.46)	3.00 (1.36)
*SA15502	30,000 (13,608)	3/4 (19.05)	1 (25.40)	3-9/32 (83.34)	11/16 (17.46)	2.75 (1.25)
*SA15503	36,000 (16,344)	1-5/16 (33.34)	1 (25.40)	3-9/32 (83.34)	13/16 (20.64)	2.90 (1.32)
SA16	30,000 (13,608)	1-3/4 (44.45)	13/16 (20.64)	2-1/16 (52.39)	11/16 (17.46)	1.80 (.82)
SA20	30,000 (13,608)	2 (50.80)	13/16 (20.64)	2-1/16 (52.39)	11/16 (17.46)	1.85 (.84)
SA22	30,000 (13,608)	2-1/4 (57.15)	13/16 (20.64)	2-1/16 (52.39)	11/16 (17.46)	1.85 (.84)
SA1013	30,000 (13,608)	1 (25.40)	13/16 (20.64)	2-1/16 (52.39)	13/16 (20.64)	1.50 (.68)
SA10.513	30,000 (13,608)	1-1/16 (26.99)	13/16 (20.64)	2-1/16 (52.39)	13/16 (20.64)	1.30 (.50)
SA1113	30,000 (13,608)	1-1/8 (28.58)	13/16 (20.64)	2-1/16 (52.39)	13/16 (20.64)	1.50 (.68)
SA1313	30,000 (13,608)	1-3/8 (34.93)	13/16 (20.64)	2-1/16 (52.39)	13/16 (20.64)	1.75 (.79)
SA1417	30,000 (13,608)	1-1/2 (38.10)	1 (25.40)	2-1/2 (63.50)	1-1/16 (26.99)	1.75 (.79)
SA1613	30,000 (13,608)	1-3/4 (44.45)	13/16 (20.64)	2-1/16 (52.39)	13/16 (20.64)	1.85 (.84)
SA16054	30,000 (13,608)	1-3/4 (44.45)	13/16 (20.64)	5-1/2 (139.70)	11/16 (17.46)	2.10 (0.95)
SA2113	30,000 (13,608)	2-1/8 (53.98)	13/16 (20.64)	2-1/16 (52.39)	13/16 (20.64)	2.00 (.91)
SA2213	30,000 (13,608)	2-1/4 (57.15)	13/16 (20.64)	2-1/16 (52.39)	13/16 (20.64)	2.00 (.91)
SA2413	30,000 (13,608)	2-1/2 (63.50)	13/16 (20.64)	2-1/16 (52.39)	13/16 (20.64)	2.25 (1.02)
SA2613	30,000 (13,608)	2-3/4 (69.85)	13/16 (20.64)	2-1/16 (52.39)	13/16 (20.64)	2.85 (1.29)
*909662000	50,000 (22,680)	1-1/16 (26.99)	1-1/8 (28.58)	5-1/2 (139.70)	1-1/16 (26.99)	5.8 (2.63)
*909642000	50,000 (22,680)	1-3/16 (30.16)	1-1/8 (28.58)	5-1/2 (139.70)	13/16 (20.64)	5.3 (2.40)
*9096-2000	50,000 (22,680)	1-7/32 (30.96)	1-1/8 (28.58)	5-1/2 (139.70)	1-3/16 (30.16)	5.6 (2.54)
*909622000	50,000 (22,680)	1-7/16 (36.51)	1-1/8 (28.58)	5-1/2 (139.70)	1-3/16 (30.16)	5.8 (2.63)
*909612000	50,000 (22,680)	1-1/2 (38.10)	1-1/8 (28.58)	5-1/2 (139.70)	13/16 (20.64)	6.0 (2.72)

NOTE: (1) For use with class 52-3 and 52-5 insulators per ANSI Spec. C-29.2-71.  
\*For use with class 52-8 and 52-11 insulators per ANSI Spec. C-29.2-71.