



# SUSPENSION

## ALUMINUM CORONA FREE CLAMP (FOR USE WITHOUT ARMOR RODS)

ALUMINUM
CFS (LONG)

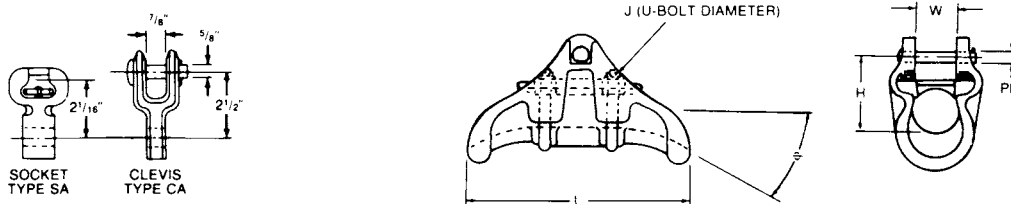
Designed for use on extra-high voltage transmission lines. Corona and RIV are controlled through the design of the clamp thus eliminating the need for control rings.

Type CFS (Long) is recommended for all aluminum, ACSR or aluminum alloy conductor.

**Material:** Body and Keeper—356-T6 aluminum alloy  
 Hardware—galvanized steel  
 Socket and Clevis—ductile iron, galvanized  
 Cotter Pin—#302 stainless steel  
 Grommet—neoprene



TB-3



CATALOG NUMBER	FITTING		CLAMPING RANGE INCHES (MM)	ULTIMATE BODY STRENGTH LBS. (KN)	MAX. TAKE-OFF ANGLE o	DIMENSIONS INCHES (MM)					APPROX. WT. EACH LBS. (KG)
	TYPE	CAT. NO.				L	W	H	J	PD	
CFS11810N	None	—	1.0-1.20 (25.40-30.48)	25,000 (111)	*17-1/2°	10 (254)	1-5/16 (33.34)	2-1/2 (63.50)	1/2 (12.70)	5/8 (15.88)	4.0 (1.81) 5.4 (2.45) 5.7 (2.59)
CFS11810S	Socket	SA10									
CFS11810C	Clevis	CA101									
CFS139105N	None	—	1.18-1.39 (29.97-35.31)	25,000 (111)	*17-1/2°	10-1/2 (266.70)	1-17/32 (38.89)	2-7/8 (73.03)	1/2 (12.70)	5/8 (15.88)	4.7 (2.13) 6.4 (2.90) 6.5 (2.94)
CFS139105S	Socket	SA13									
CFS139105C	Clevis	CA13									
CFS14711N	None	—	1.25-1.47 (31.75-37.34)	25,000 (111)	*17-1/2°	11 (279.40)	1-5/8 (41.28)	3-3/16 (80.96)	1/2 (12.70)	5/8 (15.88)	5.2 (2.36) 6.9 (3.13) 7.0 (3.17)
CFS14711S	Socket	SA13									
CFS14711C	Clevis	CA13									
CFS16212N	None	—	1.38-1.62 (35.05-41.15)	25,000 (111)	*17-1/2°	12 (304.80)	1-3/4 (44.45)	3-1/4 (82.55)	1/2 (12.70)	5/8 (15.88)	5.5 (2.49) 7.2 (3.27) 7.3 (3.31)
CFS16212S	Socket	SA13									
CFS16212C	Clevis	CA13									
CFS18214N	None	—	1.55-1.82 (39.37-46.23)	25,000 (111)	*17-1/2°	14 (355.60)	1-31/32 (50.01)	3-1/4 (82.55)	1/2 (12.70)	5/8 (15.88)	6.5 (2.95) 8.3 (3.76) 8.5 (3.86)
CFS18214S	Socket	SA16									
CFS18214C	Clevis	CA16									

NOTES: (1) Recommended torque on U-bolts; 1/2"—480 in. lbs.  
 (2) Bolt and nut may be substituted for clevis pin by adding suffix "BNK" to catalog number.  
 \*For larger angles a special corona free angle clamp is available. For information on special clamps, contact factory.