

# TEES

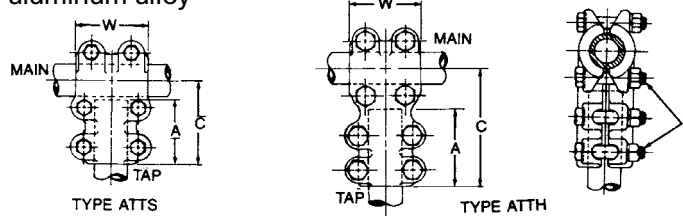
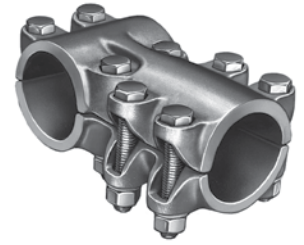
## BOLTED ALUMINUM

### TUBING MAIN TO TUBING TAP

ALUMINUM
ATTS & ATTH

Aluminum alloy, tubing to tubing, tee for connecting aluminum-aluminum or aluminum-copper conductor combinations. Clamping bolts have hex-stops for one-wrench installation. Contact sealant is recommended.

Material: Castings—356-T6 aluminum alloy  
Clamping hardware—aluminum alloy



### Product Data & Conductor Size

CATALOG NUMBER	ALUMINUM CONDUCTOR SIZE		DIMENSIONS INCHES (MM)				APPROX. WT. EACH LBS. (KG)
	TUBING MAIN IPS/EHIPS	TUBING TAP IPS/EHIPS	C	A	W	J	
†ATTS0606	3/4	3/4	3-3/8 (85.72)	2-5/8 (66.68)	2-1/2 (63.5)	1/2 (12.7)	1.4 (.64)
†ATTS1004	1	1/2	3-1/2 (88.9)	2-1/2 (63.5)	2-3/4 (69.85)	1/2 (12.7)	1.4 (.64)
†ATTS1006	1	3/4	3-1/2 (88.9)	2-5/8 (66.68)	2-3/4 (69.85)	1/2 (12.7)	1.5 (.68)
†ATTS1010	1	1	3-5/8 (92.08)	2-3/4 (69.85)	2-3/4 (69.85)	1/2 (12.7)	1.7 (.77)
ATTH1206	1-1/4	3/4	4-1/2 (114.3)	2-1/2 (63.5)	3 (76.2)	1/2 (12.7)	1.6 (.72)
ATTH1210	1-1/4	1	4-3/4 (120.65)	2-3/4 (69.85)	3 (76.2)	1/2 (12.7)	1.8 (.82)
ATTH1212	1-1/4	1-1/4	5 (127.0)	3 (76.2)	3 (76.2)	1/2 (12.7)	2.6 (1.18)
ATTH1406	1-1/2	3/4	4-1/2 (114.3)	2-1/2 (63.5)	3-1/4 (82.55)	1/2 (12.7)	1.7 (.77)
ATTH1410	1-1/2	1	4-3/4 (120.65)	2-3/4 (69.85)	3-1/4 (82.55)	1/2 (12.7)	2.0 (.91)
ATTH1412	1-1/2	1-1/4	5 (127.0)	3 (76.2)	3-1/4 (82.55)	1/2 (12.7)	2.8 (1.27)
ATTH1414	1-1/2	1-1/2	5-1/4 (133.35)	3-1/4 (82.55)	3-1/4 (82.55)	1/2 (12.7)	3.2 (1.45)
ATTH2006	2	3/4	4-3/4 (120.65)	2-1/2 (63.5)	3-1/2 (88.9)	1/2 (12.7)	1.9 (.86)
ATTH2010	2	1	5 (127.0)	2-3/4 (69.85)	3-1/2 (88.9)	1/2 (12.7)	2.2 (1.0)
ATTH2012	2	1-1/4	5-1/4 (133.35)	3 (76.2)	3-1/2 (88.9)	1/2 (12.7)	3.0 (1.36)
ATTH2014	2	1-1/2	5-1/2 (139.7)	3-1/4 (82.55)	3-1/2 (88.9)	1/2 (12.7)	3.5 (1.59)
ATTH2020	2	2	5-3/4 (146.05)	3-1/2 (88.9)	3-1/2 (88.9)	1/2 (12.7)	5.2 (2.36)
ATTH2406	2-1/2	3/4	5 (127.0)	2-1/2 (63.5)	3-3/4 (95.25)	1/2 (12.7)	2.1 (.95)
ATTH2410	2-1/2	1	5-1/4 (133.35)	2-3/4 (69.85)	3-3/4 (95.25)	1/2 (12.7)	2.4 (1.09)
ATTH2412	2-1/2	1-1/4	5-1/2 (139.7)	3 (76.2)	3-3/4 (95.25)	1/2 (12.7)	3.3 (1.50)
ATTH2414	2-1/2	1-1/2	5-3/4 (146.05)	3-1/4 (82.55)	3-3/4 (95.25)	1/2 (12.7)	3.7 (1.68)
ATTH2420	2-1/2	2	6 (152.4)	3-1/2 (88.9)	3-3/4 (95.25)	1/2 (12.7)	5.6 (2.54)

† Are furnished with 6 clamping bolts, only.  
Continued on next page.

SC-7