

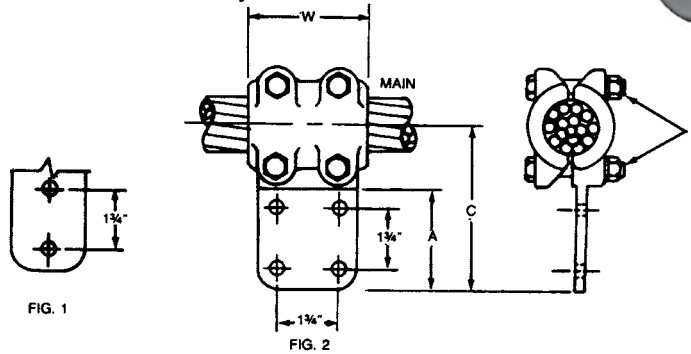
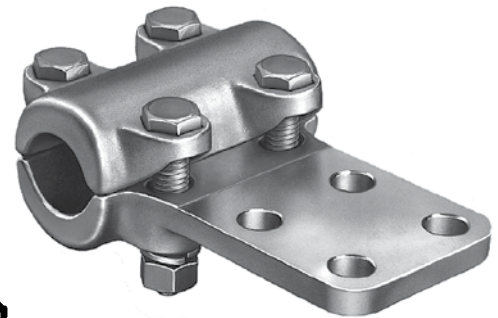


TEES BOLTED ALUMINUM CABLE MAIN TO FLAT BAR TAP

ALUMINUM
ATCF

Aluminum alloy, cable to flat bar, tee for connecting aluminum-cable to aluminum or copper flat pad combinations. Flat pads are 3/8" thick with contact surface on one side. NEMA hole spacing is standard. Contact sealant is recommended.

Material: Castings—356-T6 aluminum alloy
Clamping hardware—aluminum alloy



Product Data & Conductor Size

CATALOG NUMBER	FIG. NO.	CONDUCTOR RANGE			FLAT BAR TAP WIDTH INCHES	DIMENSIONS INCHES (MM)				APPROX. WT. EACH LBS. (KG)
		CABLE MAIN				C	A	W	J	
		AAC	ACSR	DIA.						
**ATCF6301	2	#4 Sol.-250 MCM	#4-4/0 Str.	.232-.575 (5.89-14.6)	3	4-5/8 (117.48)	3-1/4 (82.55)	3 (76.2)	1/2 (12.7)	.9 (.41)
ATCF7201	1	250-400 MCM	4/0-336.4 MCM	.563-.744 (14.3-18.9)	2	4-3/4 (120.65)	3-1/4 (82.55)	3 (76.2)	1/2 (12.7)	.9 (.41)
ATCF9201	1	350-600 MCM	336.4-477 MCM	.681-.893 (17.3-22.68)	2	4-7/8 (123.82)	3-1/4 (82.55)	3-1/4 (82.55)	1/2 (12.7)	1.4 (.64)
ATCF9301	2				4-7/8 (123.82)	3-1/4 (82.55)	3-1/4 (82.55)	1/2 (12.7)	1.8 (.82)	
ATCF9401	2				5-3/4 (146.05)	4-1/4 (107.95)	3-1/4 (82.55)	1/2 (12.7)	2.2 (1.0)	
ATCF11301	2	600-900 MCM	556.5-795 MCM	.870-1.108 (22.1-28.14)	3	5 (127.0)	3-1/4 (82.55)	3-1/2 (88.9)	1/2 (12.7)	2.3 (1.1)
ATCF11401	2				4	6 (152.4)	4-1/4 (107.95)	3-1/2 (88.9)	1/2 (12.7)	2.7 (1.3)
ATCF13301	2	900-1250 MCM	715.5-1113 MCM	1.081-1.293 (27.46-32.84)	3	5-1/8 (130.18)	3-1/4 (82.55)	3-3/4 (95.25)	1/2 (12.7)	2.4 (1.1)
ATCF15301	2	1250-1600 MCM	1113-1272 MCM	1.289-1.459 (32.74-37.06)	3	5-1/4 (133.35)	3-1/4 (82.55)	4-1/4 (107.95)	1/2 (12.7)	2.6 (1.2)
ATCF15401	2				4	6-1/4 (158.75)	4-1/4 (107.95)	4-1/4 (107.95)	1/2 (12.7)	3.0 (1.4)
ATCF16301	2	1500-2000 MCM	1272-1590 MCM	1.382-1.632 (35.1-41.45)	3	5-3/4 (146.05)	3-1/4 (82.55)	4-1/2 (114.3)	5/8 (15.88)	3.7 (1.7)
ATCF16401	2				4	6-1/2 (165.1)	4-1/4 (107.95)	4-1/2 (114.3)	5/8 (15.88)	4.2 (1.9)
ATCF18401	2	2000-2500 MCM	—	1.632-1.824 (41.45-46.33)	4	6-1/2 (165.1)	4-1/4 (107.95)	4-3/4 (120.65)	5/8 (15.88)	4.1 (1.9)
ATCF21301	2	2500-3000 MCM	—	1.824-2.0 (46.33-50.8)	3	5-3/4 (146.05)	3-1/4 (82.55)	5 (127.0)	5/8 (15.88)	4.5 (2.1)

** Main connections are furnished with reversible cable caps.

SC-3