

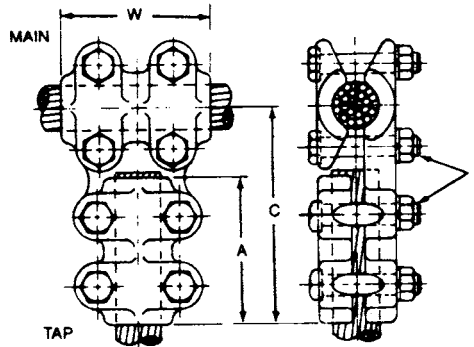


TEES BOLTED ALUMINUM CABLE MAIN TO CABLE TAP

ALUMINUM
ATCC

Aluminum alloy, cable to cable, tee for connecting aluminum-aluminum or aluminum-copper conductor combinations. Clamping bolts have hex-stops for one-wrench installation. Contact sealant is recommended.

Material: Castings—356-T6 aluminum alloy
Hardware—aluminum alloy



Product Data & Conductor Size

CATALOG NUMBER	CONDUCTOR RANGE				DIMENSIONS INCHES (MM)				APPROX. WT. EACH LBS. (KG)
	CABLE MAIN		CABLE TAP		C	A	W	J	
	AAC	ACSR	AAC	ACSR					
***ATCC66	#4 Sol.-250 MCM	#4-4/0 Str.	#4 Sol.-250 MCM	#4-4/0 Str.	4-3/8 (111.12)	3 (76.2)	3 (76.2)	1/2 (12.7)	.9 (.41)
*ATCC76	250-400 MCM	4/0-336.4 MCM	#4 Sol.-250 MCM	#4-4/0 Str.	4-3/8 (111.12)	3 (76.2)	3 (76.2)	1/2 (12.7)	1.0 (.45)
ATCC77			250-400 MCM	4/0-336.4 MCM	4-3/8 (111.12)	3 (76.2)	3 (76.2)	1/2 (12.7)	1.0 (.45)
*ATCC96	350-600 MCM	336.4-477 MCM	#4 Sol.-250 MCM	#4-4/0 Str.	4-1/2 (114.3)	3 (76.2)	3-1/4 (82.55)	1/2 (12.7)	1.1 (.50)
ATCC97			250-400 MCM	4/0-336.4 MCM	4-1/2 (114.3)	3 (76.2)	3-1/4 (82.55)	1/2 (12.7)	1.1 (.50)
ATCC99			350-600 MCM	336.4-477 MCM	4-3/4 (120.65)	3-1/4 (82.55)	3-1/4 (82.55)	1/2 (12.7)	1.1 (.50)
*ATCC116	600-900 MCM	556.5-795 MCM	#4 Sol.-250 MCM	#4-4/0 Str.	4-5/8 (117.48)	3 (76.2)	3-1/2 (88.9)	1/2 (12.7)	1.2 (.54)
ATCC117			250-400 MCM	4/0-336.4 MCM	4-5/8 (117.48)	3 (76.2)	3-1/2 (88.9)	1/2 (12.7)	1.3 (.59)
ATCC119			350-600 MCM	336.4-477 MCM	4-7/8 (123.82)	3-1/4 (82.55)	3-1/2 (88.9)	1/2 (12.7)	1.3 (.59)
ATCC1111			600-900 MCM	556.5-795 MCM	5-1/8 (130.18)	3-1/2 (88.9)	3-1/2 (88.9)	1/2 (12.7)	1.4 (.64)
*ATCC136	900-1250 MCM	715.5-1113 MCM	#4 Sol.-250 MCM	#4-4/0 Str.	4-3/4 (120.65)	3 (76.2)	3-3/4 (95.25)	1/2 (12.7)	1.7 (.77)
ATCC137			250-400 MCM	4/0-336.4 MCM	4-3/4 (120.65)	3 (76.2)	3-3/4 (95.25)	1/2 (12.7)	1.8 (.82)
ATCC139			350-600 MCM	336.4-477 MCM	5 (127.0)	3-1/4 (82.55)	3-3/4 (95.25)	1/2 (12.7)	2.0 (.91)
ATCC1311			600-900 MCM	556.5-795 MCM	5-1/4 (133.35)	3-1/2 (88.9)	3-3/4 (95.25)	1/2 (12.7)	2.1 (.95)
ATCC1313			900-1250 MCM	715.5-1113 MCM	5-1/2 (139.7)	3-3/4 (95.25)	3-3/4 (95.25)	1/2 (12.7)	2.2 (1.0)

* Tap connections are furnished with reversible cable caps.
*** Main and tap connections are furnished with reversible cable caps.
Continued on next page.

SC-1