

Expanding Pole Key Anchor

• Quicker Installing, More Efficient Than Wood Key

Made of structural steel, the Chance Pole Key anchor is used where guys are impractical or as backup to guys.

The Pole Key anchor can be installed in about 15 minutes, while it takes about 3 hours to install an old-type wood key.

The Pole Key anchor is extensively used for keying power and telephone-line poles, and wood poles used in street lighting. It is also used as a pole reinforcement in soft soils where the load is unbalanced, due to small angles or crossarm configuration.



CLOSED



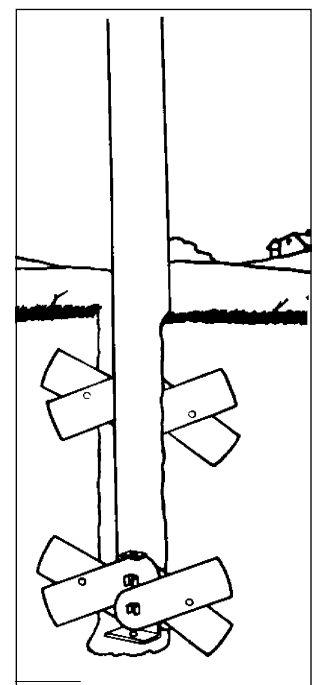
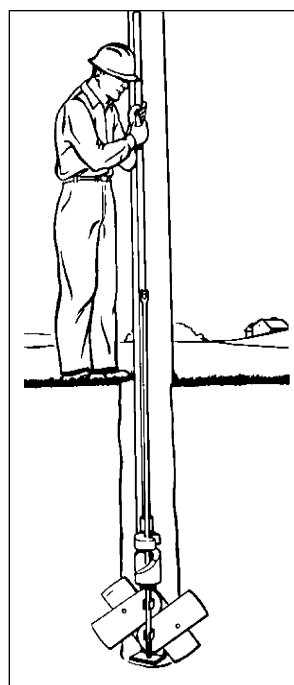
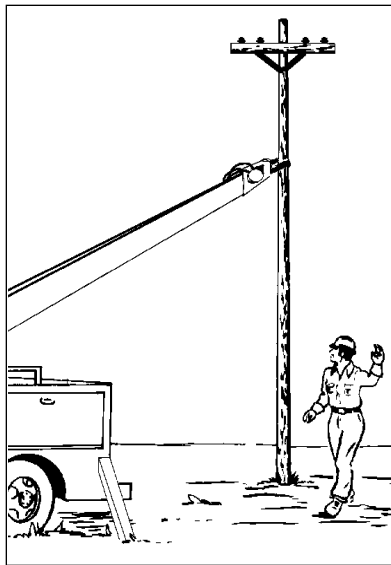
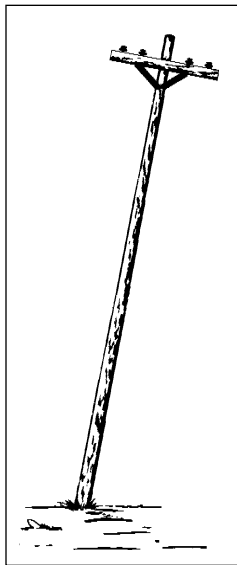
EXPANDED

Application and Ordering Information

Catalog Number	Width Expanded	Blade Width	Area Expanded	Approx. Weight	Ultimate Resisting Force at 5 ft. Depth (lb.) [€]			
					Soil Class 3	Soil Class 4	Soil Class 5	Soil Class 6
*P4817	27¼"	7"	276 sq. in.	24½ lb.	11,000	9,500	7,400	5,800

[€]The lateral load and overturning moment which can be resisted depends on the height of the load above ground level, the depths of the two opposing Pole Keys, and the allowable lateral deflection of the pole at ground line.

*RUS Accepted. Accommodates any ¾"-diameter rod on page 4-17.



Chance Pole Key anchor is quickly installed next to a pole butt to help hold it in place against light overturning loads due to service drops, prevailing winds or small changes in line direction (See illustrations).