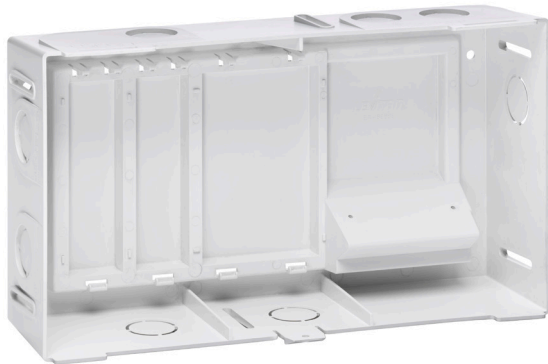


Compact Structured Media® Enclosure

APPLICATION

The Leviton Multi-Dwelling Unit (MDU) Compact Structured Media Enclosure is designed to deliver a compact distribution point for basic telephone and video of multi-unit buildings. The enclosure's unique modular design is made exclusively from ABS molded plastic. This gives customers cost savings in installation time, while providing the flexibility to accommodate a variety of telephone/video distribution configurations. The enclosure can accommodate up to three telephone expansion boards and one passive video splitter. The Leviton MDU enclosure is ideal for apartments and affordable, military, senior, and campus housing as well as urban mixed-use applications.



FEATURES

- Compact distribution point for basic telephone and video
- Snap-on cover requires no tools or fasteners
- Features molded-in brackets that provide quick snap-in convenience for telephone expansion boards
- Angled splitter shelf for easy installation
- Multiple knock-outs on top, bottom, and sides support 1-inch conduit and facilitate cable routing and entry
- Enclosure may be locked for added security

DESIGN CONSIDERATIONS

- Capacity for up to three telephone expansion boards and one passive video splitter
- Enclosure can be surface or flush mounted
- ABS molded plastic construction provides structural integrity and it comes with a UL94 VO flame-retardant fire rating
- MDU Expansion Boards and Splitters
 - 1x10 6-Line Bridged Telephone Security Expansion Board provides six lines to up to 10 locations, and comes with IDC connectors for Cat 5e wire and with a RJ-45 connector and a punch down security interface to accommodate alarm systems
 - 1x6 Bridged Telephone Expansion Board provides four lines to up to six locations and comes with IDC connectors for Cat 5e wire and a RJ-45 expansion port
 - 1x4 6-Line Bridged Telephone Expansion Board provides six lines to up to four locations and comes with IDC connectors for Cat 5e wire
 - 6- or 8-Way 2 GHz Passive Video Splitters deliver a CATV or antenna signal to six or eight television outlets

PHYSICAL SPECIFICATIONS

Dimensions: See page two

COUNTRY OF ORIGIN

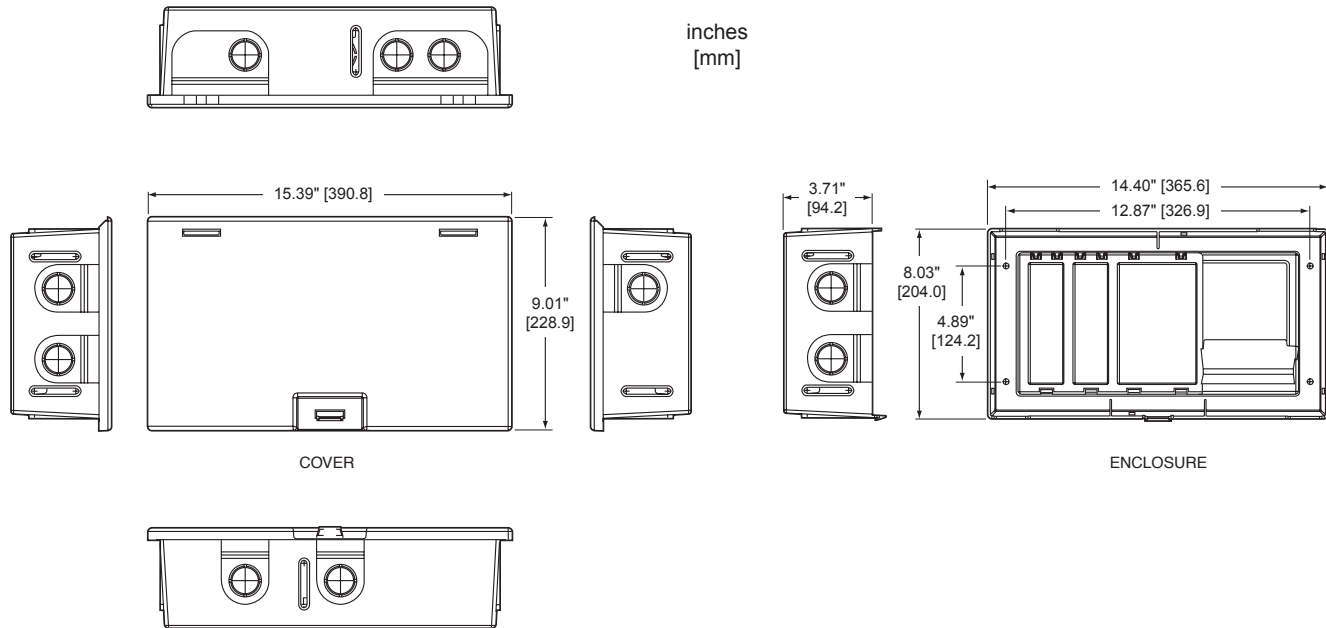
Mexico

WARRANTY INFORMATION

For a copy of Leviton product warranties, visit www.leviton.com/warranty.

ELECTRONIC FILES

For CAD files, typical specs, or technical drawings (.DXF, .DWG), visit www.leviton.com.



47605-MDU

PART NUMBERS

Description	Part No.
Compact Structured Media® Enclosure with Cover, empty	47605-MDU
MDU Expansion Boards and Splitters	
1x6 Bridged Telephone Expansion Board (4 lines up to 6 locations)	47609-0F6
1x4 6-Line Bridged Telephone Expansion Board (6 lines up to 4 locations)	47609-0F4
1x10 6-Line Bridged Telephone Security Expansion Board (6 lines up to 10 locations with RJ-45 and punchdown interface)	47609-S10
1x6 (6-Way) 2 GHz Passive Video Splitter	47690-0G6
1x8 (8-Way) 2 GHz Passive Video Splitter	47690-0G8



Leviton Network Solutions 2222 - 222nd St. SE Bothell, WA 98021-4416 tel 1-800-824-3005 tel +1-425-486-2222 appeng@leviton.com www.leviton.com	Asia / Pacific T +1.631.812.6228 E infoasean@leviton.com	Canada T +1.514.954.1840 E pcservice@leviton.com	Caribbean T +1.954.593.1896 E infocaribbean@leviton.com	China T +852.2774.9876 E infochina@leviton.com	Colombia T +57.1.743.6045 E infocolombia@leviton.com
	Europe T +33.6.8869.1380 E infoeurope@leviton.com	India / SAARC T +971.4.886.4722 E infoindia@leviton.com	Mexico T +52.55.5082.1040 E lsamarketing@leviton.com	Middle East & Africa T +971.4.886.4722 E lmeinfo@leviton.com	South Korea T +82.2.3273.9963 E infokorea@leviton.com