

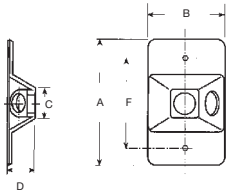
## Outdoor Lampholders and Accessories

### Nonmetallic

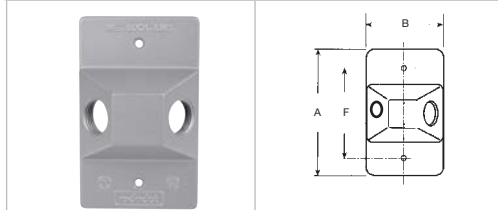


**S201BRE**

**S203E-R**



**S201E / S203E-R**



**LC-21**



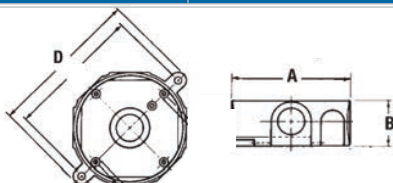
**SJ-11**

**CCRB / CCRSB**



**CE365D-CTN**

**CE365DW-CTN**



**CE365D-CTN / CE365DW-CTN**

Cat. No.	Description	A (in.)	B (in.)	C (in.)	D (in.)	F (in.)	F1 (in.)
<b>Lampholder Rectangular Covers (Zinc)</b>							
<b>S201E</b>	One 1/2 in. tapped hole, grey	4-9/16	2-13/16	1-5/32	1	-	-
<b>S201BRE</b>	One 1/2 in. tapped hole, bronze	4-9/16	2-13/16	1-5/32	1	-	-
<b>S201WHE</b>	One 1/2 in. tapped hole, white	4-9/16	2-13/16	1-5/32	1	-	-
<b>LC-21</b>	Two 1/2 in. tapped holes	4-9/16	2-13/16	1-5/32	1	3-9/32	-
<b>S203E-R</b>	Three 1/2 in. tapped holes, grey	4-9/16	2-13/16	1-5/32	1	3-9/32	-
<b>S203BRE</b>	Three 1/2 in. tapped holes, bronze	4-9/16	2-13/16	1-5/32	1	3-9/32	-
<b>S203WHE</b>	Three 1/2 in. tapped holes, white	4-9/16	2-13/16	1-5/32	1	3-9/32	-
<b>Blank Outlet Cover (Stamped aluminum)</b>							
<b>CCRB</b>	5 in. round blank outlet cover with screws. Mounting holes are 3-1/2 in. on center. Painted white	5	3-1/2	-	5/32	-	-
<b>CCRSB</b>	5 in. round blank outlet cover with screws. Mounting holes are 2-3/4 in. on center. Painted white	5	2-3/4	-	5/32	-	-
<b>Lampholder Round Covers (Die cast aluminum)</b>							
<b>SJ-11</b>	One tapped hole						
<b>SJ-21</b>	Two tapped holes						
<b>SJ-31</b>	Three tapped holes						



Cat. No.	Finish	Hub Size (in.)	No. of Lug	A (in.)	B (in.)	D (in.)
<b>Lampholder with Round Covers - Internal Gasket (Nonmetallic)</b>						
<b>CE365D-CTN</b>	Grey	5 x 1/2	2	4-1/4	1-1/2	4-15/16
<b>CE365DW-CTN</b>	White	5 x 1/2	2	4-1/4	1-1/2	4-15/16