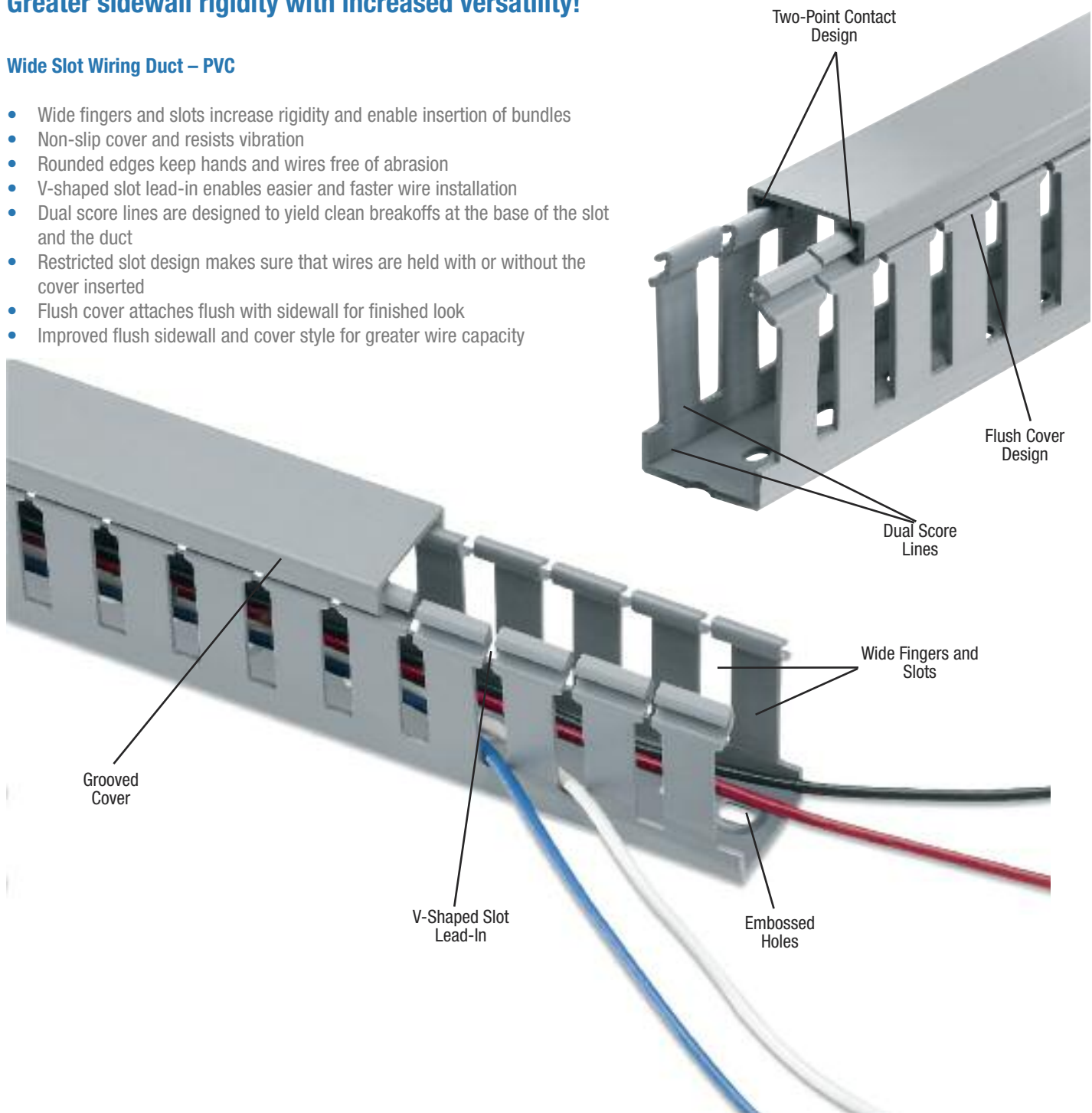


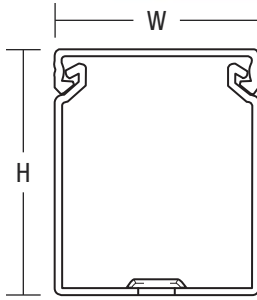
Wide Slot Wiring Duct

Greater sidewall rigidity with increased versatility!

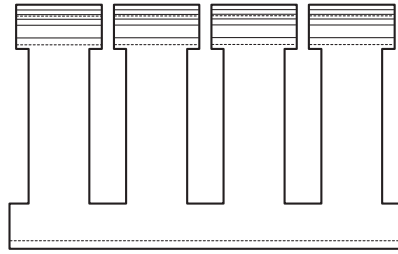
Wide Slot Wiring Duct – PVC

- Wide fingers and slots increase rigidity and enable insertion of bundles
- Non-slip cover and resists vibration
- Rounded edges keep hands and wires free of abrasion
- V-shaped slot lead-in enables easier and faster wire installation
- Dual score lines are designed to yield clean breakoffs at the base of the slot and the duct
- Restricted slot design makes sure that wires are held with or without the cover inserted
- Flush cover attaches flush with sidewall for finished look
- Improved flush sidewall and cover style for greater wire capacity



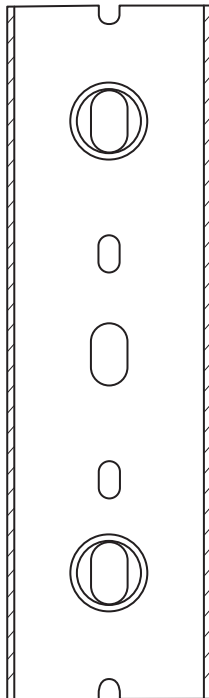


Front View w/Cover



Side View

For a complete listing of Wide Slot dimensional details, see page D23.



Bottom View

Cat. No.	Description	Size (W x H)		Cover Cat. No.	Duct Std. Ctn. Qty.	Cover Std. Ctn. Qty.	Length (ft.)		
		in.	mm						
TY75X1WP[]6	0.75 x 1 wide slot duct	0.94 x 1.14	23.9 x 29.0	TY75CP[]6	120	120	6		
TY75X15WP[]6	0.75 x 1.5 wide slot duct	0.94 x 1.60	23.9 x 40.6		120				
TY75X2WP[]6	0.75 x 2 wide slot duct	0.94 x 2.10	23.9 x 53.3		120				
TY1X1WP[]6	1 x 1 wide slot duct	1.25 x 1.14	31.8 x 29.0	TY1CP[]6	120	120	6		
TY1X15WP[]6	1 x 1.5 wide slot duct	1.25 x 1.60	31.8 x 40.6		120				
TY1X2WP[]6	1 x 2 wide slot duct	1.25 x 2.10	31.8 x 53.3		120				
TY1X3WP[]6	1 x 3 wide slot duct	1.25 x 3.05	31.8 x 77.5		120				
TY1X4WP[]6	1 x 4 wide slot duct	1.25 x 4.37	31.8 x 111.0		60				
TY15X1WP[]6	1.5 x 1 wide slot duct	1.75 x 1.14	44.5 x 29.0	TY15CP[]6	120	120	6		
TY15X15WP[]6	1.5 x 1.5 wide slot duct	1.75 x 1.60	44.5 x 40.6		120				
TY15X2WP[]6	1.5 x 2 wide slot duct	1.75 x 2.10	44.5 x 53.3		120				
TY15X3WP[]6	1.5 x 3 wide slot duct	1.75 x 3.05	44.5 x 77.5		120				
TY15X4WP[]6	1.5 x 4 wide slot duct	1.75 x 4.37	44.5 x 111.0		60				
TY2X1WP[]6	2 x 1 wide slot duct	2.25 x 1.24	57.2 x 31.5	TY2CP[]6	120	120	6		
TY2X15WP[]6	2 x 1.5 wide slot duct	2.25 x 1.70	57.2 x 43.2		120				
TY2X2WP[]6	2 x 2 wide slot duct	2.25 x 2.19	57.2 x 55.6		120				
TY2X3WP[]6	2 x 3 wide slot duct	2.25 x 3.14	57.2 x 79.8		60				
TY2X4WP[]6	2 x 4 wide slot duct	2.25 x 4.46	57.2 x 113.3		60				
TY2X5WP[]6	2 x 5 wide slot duct	2.25 x 5.15	57.2 x 130.8		60				
TY25X2WP[]6	2.5 x 2 wide slot duct	2.75 x 2.19	69.9 x 55.6		120			120	6
TY25X3WP[]6	2.5 x 3 wide slot duct	2.75 x 3.14	69.9 x 79.8		60				
TY25X4WP[]6	2.5 x 4 wide slot duct	2.75 x 4.46	69.9 x 113.3	60					
TY3X1WP[]6	3 x 1 wide slot duct	3.25 x 1.24	82.6 x 31.5	TY3CP[]6	120	120	6		
TY3X2WP[]6	3 x 2 wide slot duct	3.25 x 2.19	82.6 x 55.6		60				
TY3X3WP[]6	3 x 3 wide slot duct	3.25 x 3.14	82.6 x 79.8		60				
TY3X4WP[]6	3 x 4 wide slot duct	3.25 x 4.46	82.6 x 113.3		60				
TY3X5WP[]6	3 x 5 wide slot duct	3.25 x 5.15	82.6 x 130.8		60				
TY4X15WP[]6	4 x 1.5 wide slot duct	4.25 x 1.70	108.0 x 43.2	TY4CP[]6	60	120	6		
TY4X2WP[]6	4 x 2 wide slot duct	4.25 x 2.19	108.0 x 55.6		60				
TY4X3WP[]6	4 x 3 wide slot duct	4.25 x 3.14	108.0 x 79.8		60				
TY4X4WP[]6	4 x 4 wide slot duct	4.25 x 4.46	108.0 x 113.3		30				
TY4X5WP[]6	4 x 5 wide slot duct	4.25 x 5.15	108.0 x 130.8		30				
TY6X4WP[]6	6 x 4 wide slot duct	6.25 x 4.46	158.8 x 113.3		30			60	

[] = space for colour identifier:

- G = Grey
- W = White
- B = Black
- I = Intrinsic Blue

Standard lengths are 6 feet.

Catalogue Number must be completed by adding suffix G for Grey, W for White, I for Intrinsic Blue, B for Black.

Example: TY75X1WPG6 is a 0.75 in. x 1 in. wide slot grey duct

To order duct without mounting holes, add suffix NM to catalogue number.

Example: TY75X1WPG6NM is a 0.75 in. x 1 in. wide slot grey duct with no mounting holes

To order Adhesive-Backed Duct, add suffix A to catalogue number.

Example: TY75X1WPG6A is a 0.75 in. x 1 in. wide slot grey duct with adhesive backing. Shelf life for adhesive is 1 year

PVC vinyl duct is UL Recognized , CSA Certified and CE Compliant