

Channels, Nuts and Fittings

Channels

Kindorf® channel is a rugged, heavy-gage structural-quality steel channel preformed in a "U" shape with a continuous open slot the entire length. The turned-in edges serve as retaining points for the nut and bolt assembly of fittings to the channel. The shape of the channel permits infinite adjustability of the clamping nut simply by gliding it along the channel to the desired position. Spring-tensioned nuts are generally used for

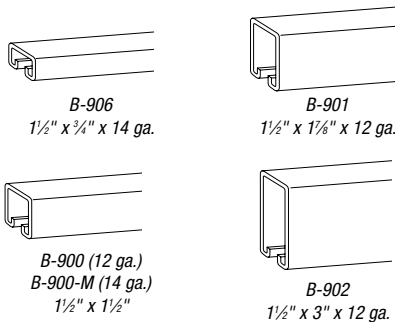
positioning overhead or in vertical channel installations. A stud nut (with spring) is provided for easy mounting of cabinets and equipment.

Channel Nuts are specially shaped as parallelograms with biting edges so that when tightened with normal pressure on the bolt, the nut clamps the sides of the channel together in a secure connection, which reinforces the rigidity of the channel itself. The nut rests on the "lips" of the channel slot.

Steel Channels

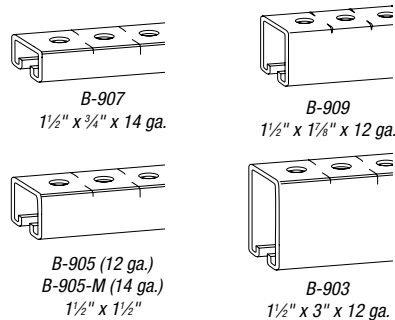
- Galv-Krom® finish
- 10 ft. and 20 ft. lengths

Solid Base



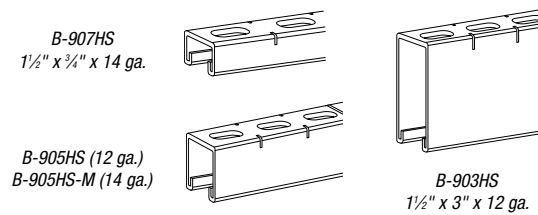
Bolt Hole Base

- $\frac{3}{16}''$ diameter bolt holes on $1\frac{1}{2}''$ centers $\frac{3}{4}''$ from end



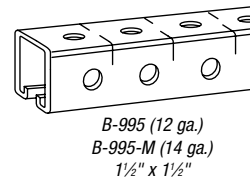
Half-Slot Base

- $\frac{3}{16}'' \times \frac{7}{8}''$ slots on $1\frac{1}{2}''$ centers $\frac{3}{4}''$ from end

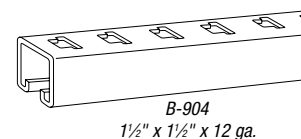


Bolt Hole Base

- Bolt holes on 3 sides, $\frac{3}{16}''$ diameter on $1\frac{1}{2}''$ centers $\frac{3}{4}''$ from end

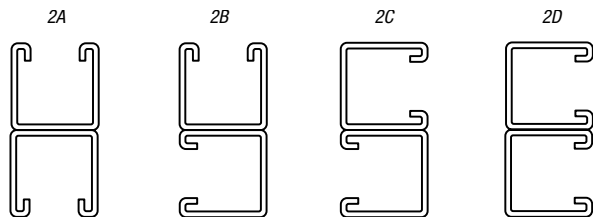


T-Slot Base



Kindorf® Channels — Combination Channels

All Kindorf® channels are available in a variety of combinations — some are shown below.

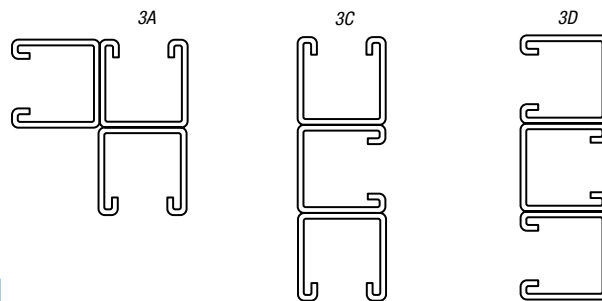


10- and 20-ft. lengths — steel

How To Order

Add the suffix designation of the desired combination to the regular channel catalog number.

(Example: Two B-900 channels back to back are ordered as B-900-2A.)

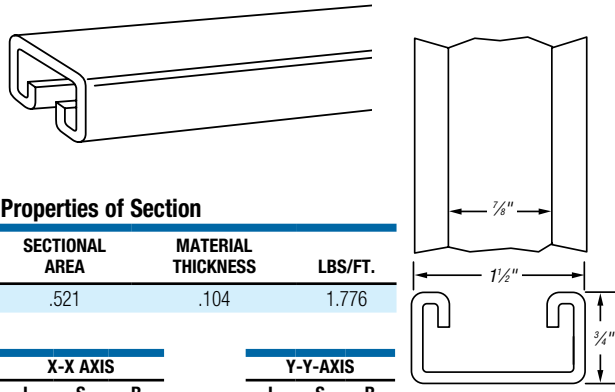


Special lengths may be ordered.

Channels, Nuts and Fittings

B-906 Channel — 1½" x ¾"

Connection by means of continuous slot.



Properties of Section

SECTIONAL AREA	MATERIAL THICKNESS	LBS./FT.
.521	.104	1.776

X-X AXIS		
I	S	R
.155	.088	.545

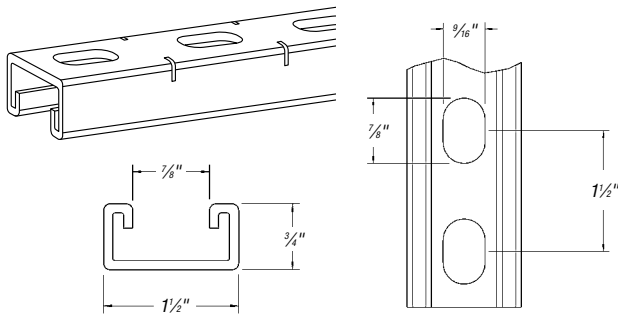
Y-Y AXIS		
I	S	R
.2	.259	.619



CAT. NO.	DESCRIPTION	MATERIAL
B 906 10	Galv-Krom®	14 ga.
B-906-20	Galv-Krom®	14 ga.
B-906-10-EG	SilverGalv®	14 ga.
B-906-20-EG	SilverGalv®	14 ga.

Use H-113-A bolts and B-910-½" or B-912-½" steel nuts for mounting fittings.
Steel 75 lbs./C ft.

B-907HS Channel — 1½" x ¾"

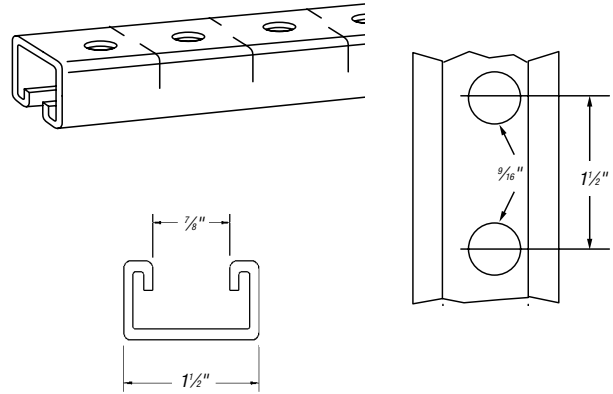


CAT. NO.	DESCRIPTION	MATERIAL
B 907HS 10	Galv-Krom®	14 ga.
B-907HS-20	Galv-Krom®	14 ga.
B-907HS-10-EG	SilverGalv®	14 ga.
B-907HS-20-EG	SilverGalv®	14 ga.

Use H-113-A bolts and B-910-½" or B-912-½" steel nuts for mounting fittings.
Holes on B-900 series fittings match channel holes.
Scribe marks on steel channel designate midpoint between holes for accurate field cutting.
Steel 71 lbs./C ft.

B-907 Channel — 1½" x ¾"

Connection by means of continuous slot
or 9/16" holes on 1½" centers.



CAT. NO.	DESCRIPTION	MATERIAL
B-907-10	Galv-Krom®	14 ga.
B-907-20	Galv-Krom®	14 ga.
B-907-10-EG	SilverGalv®	14 ga.
B-907-20-EG	SilverGalv®	14 ga.

Use H-113-A bolts and B-910-½" or B-912-½" steel nuts for mounting fittings.
Holes on B-900 series fittings match channel holes.
Scribe marks on steel channel designate midpoint between holes for accurate field cutting.
Steel 71 lbs./C ft.



CAT. NO.	DESCRIPTION	JOINER
B-907	14 ga. Galv-Krom	B948
B-907-10GR	Green Coated	B948
B-907-20GR	Green Coated	B948
B-907-10PG	Pre-Galvanized	B948
B-907-20PG	Pre-Galvanized	B948
B-907-10HD	Hot-Dipped Galvanized	B948
B-907-20HD	Hot-Dipped Galvanized	B948

Use H-113-A bolts and B-910-½" or B-912-½" steel nuts for mounting fittings.
Holes on B-900 series fittings match channel holes.
Scribe marks on steel channel designate midpoint between holes for accurate field cutting.
Steel 71 lbs./C ft.