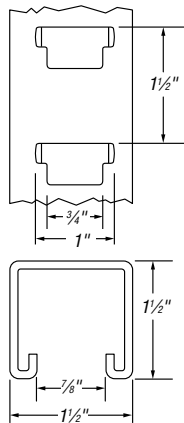
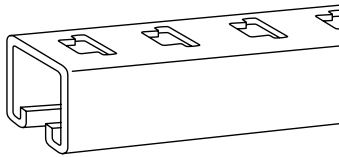


## Channels, Nuts and Fittings

### B-904 Channel — 1½" x 1½"

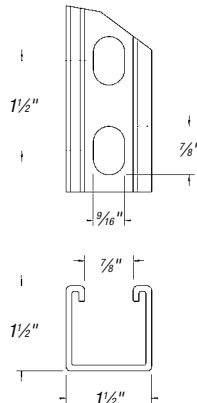
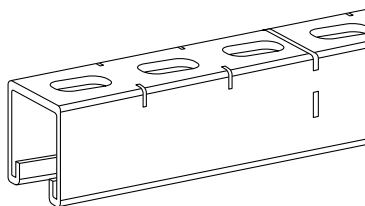
Connection by means of continuous slot or T-slots on 1½" centers in base side of channel.



CAT. NO.	DESCRIPTION
<b>B-904 10</b>	12 ga. Galv-Krom®
<b>B-904HD</b>	Hot-Dipped Galvanized

For attachment to continuous slot use H-113-B bolts and B-910-1/2 steel nuts.  
For attachment to T-slots use F-739 brackets 155 lbs./C ft.

### B-905HS Channel — 1½" x 1½"

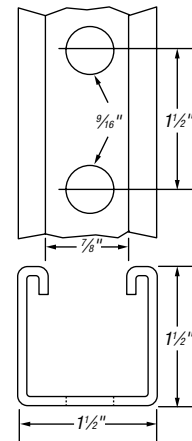
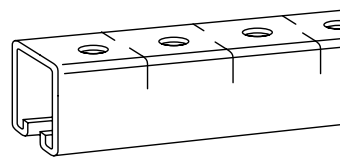


CAT. NO.	DESCRIPTION	MATERIAL
<b>B 905HS 10</b>	Galv-Krom®	12 ga.
<b>B-905HS-20</b>	Galv-Krom®	12 ga.
<b>B-905HS-M-10</b>	Galv-Krom®	14 ga.
<b>B-905HS-M-20</b>	Galv-Krom®	14 ga.
<b>B-905HS-10-EG</b>	SilverGalv®	12 ga.
<b>B-905HS-20-EG</b>	SilverGalv®	12 ga.
<b>B-905HS-M-10-EG</b>	SilverGalv®	14 ga.
<b>B-905HS-M-20-EG</b>	SilverGalv®	14 ga.

Use H-113-B bolts and B-910-1/2 or B-911-1/2 steel nuts for mounting fittings.  
Scribe marks designate midpoint between holes for accurate field cutting.  
B-905, 158 lbs./C ft. B-905-M, 102 lbs./C ft.

### B-905 Channel — 1½" x 1½"

Connection by means of continuous slot or 9/16" holes on 1½" centers that match holes in B-900 series fittings.



CAT. NO.	DESCRIPTION	MATERIAL
<b>B 905 10</b>	Galv-Krom®	12 ga.
<b>B-905-20</b>	Galv-Krom®	12 ga.
<b>B-905-M-10</b>	Galv-Krom®	14 ga.
<b>B-905-M-20</b>	Galv-Krom®	14 ga.
<b>B-905-10-EG</b>	SilverGalv®	12 ga.
<b>B-905-20-EG</b>	SilverGalv®	12 ga.
<b>B-905-M-10-EG</b>	SilverGalv®	14 ga.
<b>B-905-M-20-EG</b>	SilverGalv®	14 ga.

Use H-113-B bolts and B-910-1/2 or B-911-1/2 steel nuts for mounting fittings.  
Scribe marks designate midpoint between holes for accurate field cutting.  
B-905, 158 lbs./C ft. B-905-M, 102 lbs./C ft.

CAT. NO.	DESCRIPTION	JOINER	END CAP
<b>B-905</b>	12 ga. Galv-Krom®	—	—
<b>B-905-M</b>	14 ga. Galv-Krom®	—	—
<b>B-905-10GR</b>	Green Coated	—	—
<b>B-905-20GR</b>	Green Coated	—	—
<b>B-905-10PG</b>	Pre-Galvanized	—	—
<b>B-905-20PG</b>	Pre-Galvanized	—	—
<b>B-905-10HD</b>	Hot-Dipped Galvanized	—	—
<b>B-905-20HD</b>	Hot-Dipped Galvanized	—	—

Use H-113-B bolts and B-910-1/2 or B-911-1/2 steel nuts for mounting fittings.  
Scribe marks designate midpoint between holes for accurate field cutting.  
B-905, 158 lbs./C ft. B-905-M, 102 lbs./C ft.