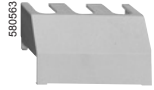


Stop the machine

Mini-VARIO and VARIO switch disconnectors

Accessories



VZ8



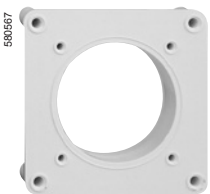
VZ26



VZ18



KZ32



KZ81

Input terminal protection shrouds

Description	For use on	Reference	Weight kg
For switch bodies (3-pole shroud)	V02...V2	VZ8	0.015
	V3 and V4	VZ9	0.020
	V5 and V6	VZ10	0.060
For add-on pole modules (single-pole shroud)	VZ02...VZ2, VZ11, VZ14	VZ26	0.005
	VZ3, VZ4, VZ12, VZ15	VZ27	0.007
	VZ13, VZ16	VZ28	0.020
For contact blocks with 2 auxiliary contacts	–	VZ29	0.005

Components for door interlocking

For rear fixing switch disconnectors mounted at the back of an enclosure, in addition to a direct operator

Description	For use on	Distance enc.back/door mm	Sold in lots of	Unit reference	Weight kg
Shaft extensions	VN12, VN20 V02...V2	300...330	1	VZN17 (1)	0.100
		400...430	1	VZN30 (1)	0.130
	V02...V2	300...330	1	VZ17	0.075
		400...430	1	VZ30	0.125
	V3 and V4	300...320	1	VZ18	0.170
		400...420	1	VZ31	0.215
V5 and V6	330...350	1	VZ18	0.170	
	430...450	1	VZ31	0.215	
Door interlock plates	VN12, VN20 V02...V2	–	5	KZ32	0.177
		V3...V6	–	5	KZ74

Description	For use on	Front plate dimensions mm	Sold in lots of	Unit reference	Weight kg
Plates for door mounting of handles with 4 screw fixing	VN12, VN20 V02...V2	45 x 45 or 60 x 60	5	KZ83	0.205
		V3...V6	60 x 60 or 90 x 90	5	KZ81
Adapter plate for switch disconnectors	V3 and V4	90 x 90	5	KZ106	0.075

(1) Can be used with V02 to V2 switches.