

Table 8.13: Switch Body [8]

Rating (A)		Shaft Size mm	3-Pole Switch Body	
UL	IEC		Type	
10	12	6	V02	
16	20	6	V01	
20	25	6	V0	
20	32	6	V1	
25	40	6	V2	
45	63	8	V3	
63	80	8	V4	
100	125	8	V5	
115	175	8	V6	

Table 8.14: NEMA Type 1 and 12 Handle Operators: V02–V2 (6 mm Shaft), V3–V6 (8 mm Shaft) [9]

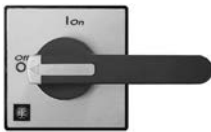
Operator Type		Red/Yellow Single Hole 45 x 45 mm	Red/Yellow Four Hole 45 x 45 mm	Black/Gray Single Hole 45 x 45 mm	Black/Gray Four Hole 45 x 45 mm
Switches	No. of Padlocks	Catalog No.	Catalog No.	Catalog No.	Catalog No.
V02–V2	0	KCC1LZ	KCE1LZ	KAC1BZ	KAE1BZ
V02–V2	1	KCC1YZ	KCE1YZ	—	—
Operator Type		Red/Yellow Single Hole 60 x 60 mm	Red/Yellow Four Hole 60 x 60 mm	Black/Gray Single Hole 60 x 60 mm	Black/Gray Four Hole 60 x 60 mm
V02–V2	0	KDD1PZ	KDF1PZ	KBD1PZ	KBF1PZ
V3–V4	0	—	KDF2PZ	—	KBF2PZ
V02–V2	3	KCD1PZ	KCF1PZ	KAD1PZ	KAF1PZ
V3–V4	3	—	KCF2PZ	—	KAF2PZ
Operator Type		Red/Yellow Four Hole 90 x 90 mm	Black/Gray Four Hole 90 x 90 mm		
V5–V6	0	KDF3PZ	KBF3PZ		
V5–V6	3	KCF3PZ	KAF3PZ		



Single-Hole Operator



Four-Hole Operator
(All except KDF3PZ and KBF3PZ)



Four-Hole Operator
KDF3PZ and KBF3PZ



Low-Profile Handle KCD1YZ

Table 8.15: Low Profile Handle Operators [9]

Operator Type		Red/Yellow Single Hole 60 x 60 mm	Red/Yellow Four Hole 60 x 60 mm	Black/Gray Single Hole 60 x 60	Black/Gray Four Hole 60 x 60 mm
Switches	No. of Padlocks	Catalog No.	Catalog No.	Catalog No.	Catalog No.
V02–V2	3	KCD1YZ	KCF1YZ	KAD1XZ	KAF1XZ
V3–V4	3	—	KCF2YZ	—	KAF2XZ
Operator Type		Red/Yellow Four Hole 90 x 90 mm	Black/Gray Four Hole 90 x 90 mm		
V5–V6	3	KCG2YZ	KAG2XZ		

Table 8.16: Gasket Kits

Catalog No.	Description
KZ65	45 x 45 mm gasket for V02-V2 for 4-hole type handles (order in quantities of 5)—IP65
KZ66	60 x 60 mm gasket for V02-V2 for 4-hole type handles (order in quantities of 5)—IP65
KZ62	60 x 60 mm gasket for V3-V4 for 4-hole type handles (order in quantities of 5)—IP65
KZ67	90 x 90 mm gasket for V5-V6 for 4-hole type handles (order in quantities of 5)—IP65

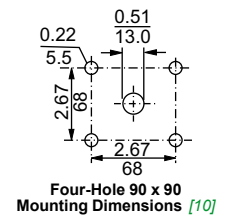
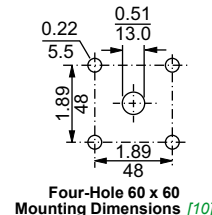
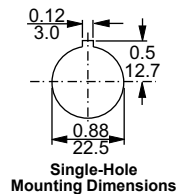
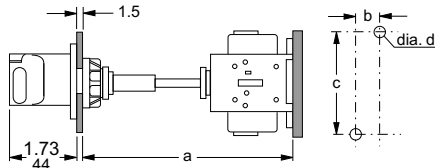


Table 8.17: Rear/Panel Mounting Switch Body Dimensions

Type	Shaft Extension	Dimensions							
		a		b		c		d	
		in.	mm	in.	mm	in.	mm	in.	mm
V02 to V2	VZ17 VZ30	5.5–13.0 5.5–16.9	140–330 140–430	0.60	15	2.4	60	0.17	4.2
V3 to V4	VZ18 VZ31	5.5–12.6 5.5–16.5	140–320 140–420	0.79	20	2.4	60	0.20	5.2
V5 to V6	VZ18 VZ31	6.5–13.8 6.5–17.7	165–350 165–450	1.20	30	3.9	100	0.28	7.0



[8] Refer to Table 8.10 Metallic Enclosed Switches, page 8-4 and Table 8.12 Vario Manual Motor Control Switches, page 8-4 for horsepower ratings.

[9] When using these handles for replacements on the non-metallic enclosed switches, the handle shaft that comes with the enclosure must be reused. See Section 17 of the Supplemental Digest.

[10] The door interlock plate included with VCC Kits has the same drilling as the handle operators.