

XJ-L™ HD Busway Systems

Bus Plugs

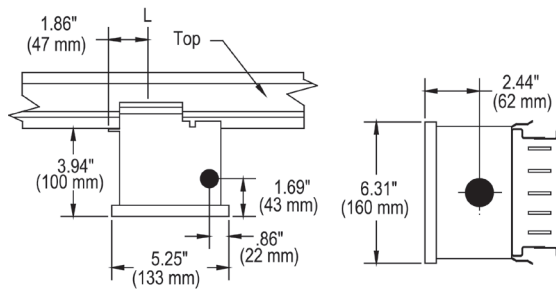
XQ and XQR Series

XQ and XQR bus plugs accept QP (plug-in) or BQ (bolt-on) circuit breakers. The plugs feature knockouts to facilitate quick installation. The XQR has added wiring space to allow receptacle installation.

XQ Series Bus plug (60A max)

Breaker Type	Volts	No. of Spaces	Catalogue Number	Model Number ^①	Catalogue Number	Model Number ^①
QP and BQ	120/240	3	XQ35	BPJA1GE	XQ45	BPJA5GE

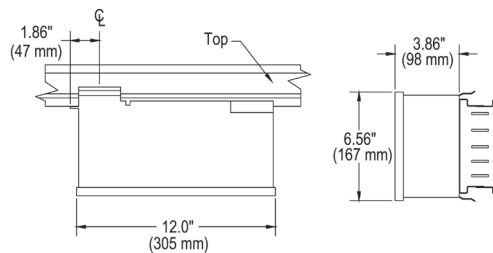
Enclosure Only



XQR Series Bus plug (60A max)

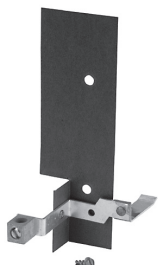
Breaker Type	Volts	No. of Spaces	Catalogue Number	Model Number ^①	Catalogue Number	Model Number ^①
QP and BQ	120/240	3	XQ35R	BPJB1GE	XQ45R	BPJB5GE

Enclosure Only



Accessories for XQ and XQR Series

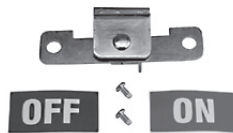
XEQH	Floor Operating Handle (not for 1 pole or 2 pole breakers)
W62890	Bonded Ground Kit
W68101	Isolated Ground Kit



W68101



W62890



XEQH

© Model Numbers Effective Aug 2011