

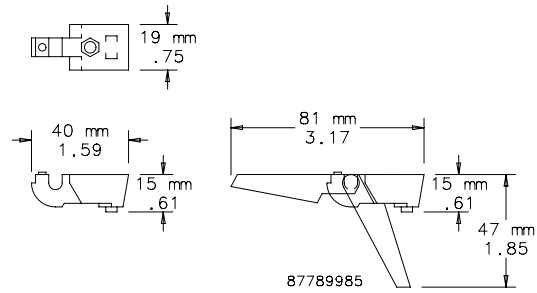
TIP-UP FOOT KIT FOR ELECTRONIC CASE



Tip-up feet can be mounted on the bottom cover to provide an improved viewing angle for rack mounted equipment installed in an electronic case. In tip-up position, front of case is raised 1.38 in. (35 mm). Feet attach to holes provided in the bottom cover and include an anti-skid rubber insert. Feet are gray plastic.

BULLETIN: DEC1

Catalog Number	Description	Kit Includes
EECFTP	Tip-Up Foot Kit	2 tip-up feet, 2 standard feet and mounting hardware

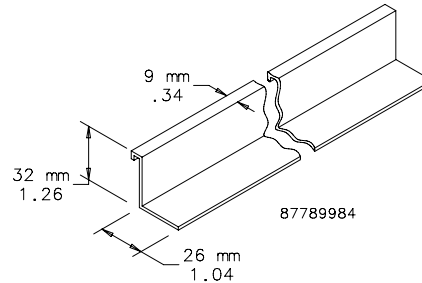


SLIDE RAILS FOR ELECTRONIC CASE

Slide Rails support a 19-in. subrack or chassis when installed in an electronic case. Rails attach to protrusions on the inside front and back castings of the case framework. They are positionable in increments of 1.75 in. (44 mm) vertically. Slide rails are aluminum extrusions with a clear anodized finish. They snap into place; no mounting hardware is required.

BULLETIN: DEC1

Catalog Number	Fits Case	Package Includes
EECCR50	500-mm deep	1 rail
EECCR60	600-mm deep	1 rail



HARDWARE KITS FOR ELECTRONIC CASE

Use to mount Electronic Case on rack angles with 9-mm square holes.

BULLETIN: DACCY, P20, X20

Catalog Number	Description	Package Includes	Package Qty.
ECNSM6	M6 fastener package	Pan head Posidrive plated M6 x 16 screws, ABS black plastic cup washers and plated cage nuts	8
PM5CN	M5 cage nut package	M5 plated cage nuts	50
ASM5	M5 screw package	Pan head combination screws	20