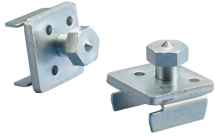
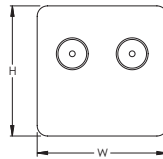
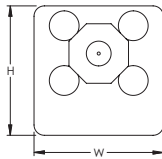
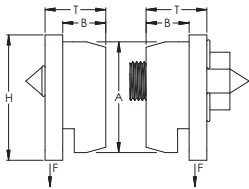


# BC23 Internal Strut Beam Clamp – BC23A000EG



- Kit of two inserts for A type channel
- Complete with pointed head hex bolts for easy installation



Part Number	BC23A000EG
Material	Steel
Finish	Electrogalvanized
Strut Type	A (1 5/8" x 1 5/8")
Height (H)	1 5/8"
Width (W)	1 5/8"
A	1 7/16"
B	9/16"
Thickness (T)	13/16"
Static Load (F)	800 lb
Standard Packaging Quantity	25 pc
UPC	78285634023
EAN-13	8711893057119

## WARNING

Pentair products shall be installed and used only as indicated in Pentair's product instruction sheets and training materials. Instruction sheets are available at [erico.pentair.com](http://erico.pentair.com) and from your Pentair customer service representative. Improper installation, misuse, misapplication or other failure to completely follow Pentair's instructions and warnings may cause product malfunction, property damage, serious bodily injury and death and/or void your warranty.

© 2018 Pentair All rights reserved

Pentair, CADDY, CADWELD, CRITEC, ERICO, ERIFLEX, ERITECH and LENTON are owned by Pentair or its global affiliates.

All other trademarks are the property of their respective owners. Pentair reserves the right to change specifications without prior notice.

