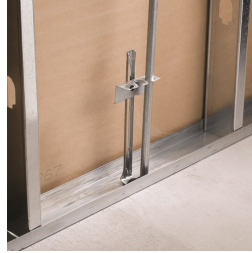
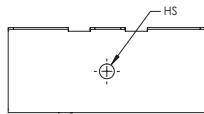
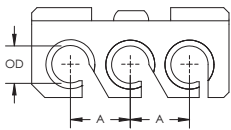


# Multiple Conduit Support – CCS812



- Use with screw gun brackets to support conduit between studs
- Use with Footed Box Support for conduits in concrete pours
- Eliminates offset bending of conduit



Part Number	CCS812
Material	Steel
Finish	Pregalvanized
EMT Conduit Size	1/2" 3/4"
Rigid Conduit Size	1/2"
Outer Diameter (OD)	0.706"
Hole Size (HS)	0.28"
A	1.12"
Standard Packaging Quantity	100 pc
UPC	78285626533

## WARNING

Pentair products shall be installed and used only as indicated in Pentair's product instruction sheets and training materials. Instruction sheets are available at [erico.pentair.com](http://erico.pentair.com) and from your Pentair customer service representative. Improper installation, misuse, misapplication or other failure to completely follow Pentair's instructions and warnings may cause product malfunction, property damage, serious bodily injury and death and/or void your warranty.

© 2018 Pentair All rights reserved

Pentair, CADDY, CADWELD, CRITEC, ERICO, ERIFLEX, ERITECH and LENTON are owned by Pentair or its global affiliates.

All other trademarks are the property of their respective owners. Pentair reserves the right to change specifications without prior notice.

