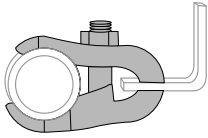


POWER-STRUT®	Part No. & Length	Fin.	Std Qty	Wt./ 100	List Price per 100 pcs
---------------------	-------------------	------	---------	----------	------------------------

PS 52 E

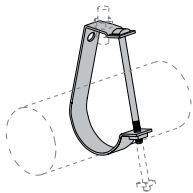
Parallel Pipe And Conduit Clamp



PS 52 E 1/2	EG	50	59	\$1007.70
PS 52 E 3/4	EG	50	64	\$1034.16
PS 52 E 1	EG	50	70	\$1052.50
PS 52 E 1-1/4	EG	50	72	\$1225.73
PS 52 E 1-1/2	EG	50	93	\$1386.89
PS 52 E 2	EG	50	128	\$2362.95
PS 52 E 2-1/2	EG	25	135	\$3284.01
PS 52 E 3	EG	25	155	\$3413.00
PS 52 E 3-1/2	EG	10	190	\$3651.95
PS 52 E 4	EG	10	205	\$4047.86

PS 67

Pipe Or Conduit Hanger



PS 67 1/2	EG	50	21	\$360.75
PS 67 3/4	EG	50	22	\$352.59
PS 67 1	EG	50	25	\$407.59
PS 67 1-1/4	EG	50	29	\$418.85
PS 67 1-1/2	EG	50	31	\$482.81
PS 67 2	EG	25	35	\$493.53
PS 67 2-1/2	EG	25	74	\$855.35
PS 67 3	EG	25	81	\$888.76
PS 67 3-1/2	EG	25	88	\$1018.28
PS 67 4	EG	15	182	\$1147.80
PS 67 5	EG	10	203	\$1898.35
PS 67 6	EG	10	236	\$1941.79

PS 69

E-Z Grip Hanger



PS 69 1/2	EG	100	8	\$212.48
PS 69 3/4	EG	100	9	\$209.91
PS 69 1	EG	100	9	\$217.23
PS 69 1-1/4	EG	100	10	\$220.09
PS 69 1-1/2	EG	100	11	\$235.56
PS 69 2	EG	100	12	\$253.61
PS 69 2-1/2	EG	100	25	\$380.02
PS 69 3	EG	100	27	\$410.03
PS 69 4	EG	100	48	\$760.18

PS 83

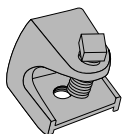
Hexagon Nut



PS 83 1/4	EG	500	0.7	\$23.49
PS 83 3/8	EG	500	2	\$30.69
PS 83 1/2	EG	100	4	\$53.63
PS 83 5/8	EG	50	7	\$76.43
PS 83 3/4	EG	50	12	\$132.24

PS 85

Rod Or Insulator Support

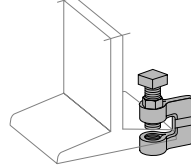


PS 85 1/4	EG	50	23	\$438.13
PS 85 3/8	EG	25	95	\$1114.95
PS 85 1/2	EG	25	195	\$1797.87

POWER-STRUT®	Part No. & Length	Fin.	Std Qty	Wt./ 100	List Price per 100 pcs
---------------------	-------------------	------	---------	----------	------------------------

PS 86

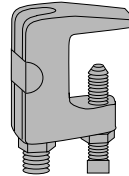
Clamp With Locknut



PS 86 3/8	EG	50	38	\$648.17
PS 86 1/2	EG	50	52	\$873.29
PS 86 5/8	EG	50	68	\$1383.36
PS 86 3/4	EG	50	128	\$2171.24

PS 93

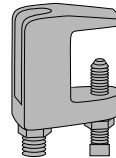
Top Beam "C" Clamp



PS 93 3/8	EG	50	41	\$744.30
PS 93 1/2	EG	50	75	\$986.23

PS 94

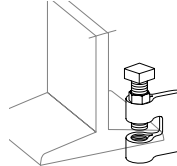
Top Beam "C" Clamp



PS 94 5/8	EG	25	66	\$1453.15
PS 94 3/4	EG	25	83	\$1881.78

PS 95

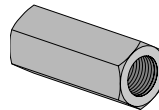
Clamp With Locknut



PS 95 3/8	EG	50	35	\$590.60
PS 95 1/2	EG	50	41	\$630.52
PS 95 5/8	EG	50	67	\$1135.04
PS 95 3/4	EG	50	72	\$2146.14

PS 135

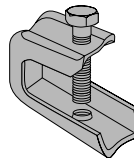
Rod Coupling



PS 135 1/4	EG	100	2	\$157.22
PS 135 3/8	EG	100	9	\$218.99
PS 135 1/2	EG	50	10	\$314.31
PS 135 5/8	EG	25	18	\$588.03
PS 135 3/4	EG	25	28	\$960.18

PS 135 X

Beam Clamp Light Duty



PS 135 X	EG 1/4"	50	14	\$331.83
----------	---------	----	----	----------