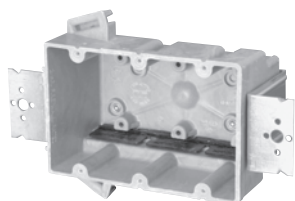


Three Gang:

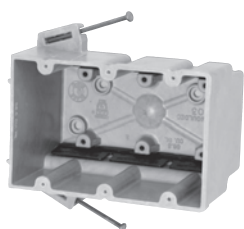
Residential Switch or Receptacle Box

Series 3300-2Z2



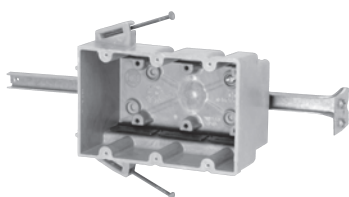
Cu. In. Volume	Catalog Number	Component Description	D	W	H	UPC# 85339	Std. Pkg. Qty.	Std. Pkg. Wt. (lb.)
46.0	3300-2Z2	1/4" offset, "Z" hanger each side of box, Speed Klamps™-bulk packed	3	5-11/16	3-3/4	14700	25	26
46.0	3300-2Z2K*	1/4" offset, "Z" hanger each side of box, Speed Klamps™-factory installed	3	5-11/16	3-3/4	14702	25	26
46.0	3300-2Z4	1/2" offset, "Z" hanger each side of box, Speed Klamps™-bulk packed	3	5-11/16	3-3/4	15120	25	26
46.0	3300-2Z4K	1/2" offset, "Z" hanger each side of box, Speed Klamps™-factory installed	3	5-11/16	3-3/4	15121	25	26

Series 3300-N



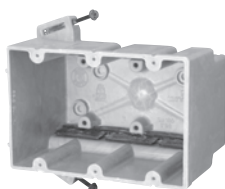
Cu. In. Volume	Catalog Number	Component Description	D	W	H	UPC# 85339	Std. Pkg. Qty.	Std. Pkg. Wt. (lb.)
46.0	3300-N	Angled mid-nails, Speed Klamps™-bulk packed	3	5-11/16	3-3/4	14175	20	16
46.0	3300-NC3	Angled mid-nails, 3 wire clamps-factory installed	3	5-11/16	3-3/4	14190	20	17
46.0	3300-NC6	Angled mid-nails, 6 wire clamps-factory installed	3	5-11/16	3-3/4	14205	20	18
46.0	3300-NK*	Angled mid-nails, Speed Klamps™-factory installed	3	5-11/16	3-3/4	14177	20	17

Series 3300-NB



Cu. In. Volume	Catalog Number	Component Description	D	W	H	UPC# 85339	Std. Pkg. Qty.	Std. Pkg. Wt. (lb.)
46.0	3300-NB	Angled mid-nails, adj. stabilizing bar, Speed Klamps™-bulk packed	3	5-11/16	3-3/4	14210	20	20
46.0	3300-NBC3	Angled mid-nails, adj. stabilizing bar, 3 wire clamps-factory installed	3	5-11/16	3-3/4	14225	20	22
46.0	3300-NBK*	Angled mid-nails, adj. stabilizing bar, Speed Klamps™-factory installed	3	5-11/16	3-3/4	14212	20	21

Series 3300-SS



Cu. In. Volume	Catalog Number	Component Description	D	W	H	UPC# 85339	Std. Pkg. Qty.	Std. Pkg. Wt. (lb.)
46.0	3300-SS	Steel stud screws for use with non-load bearing studs 22 gauge or lighter, Speed Klamps™-bulk packed	3	5-11/16	3-3/4	14522	20	18
46.0	3300-SSK*	Steel stud screws for use with non-load bearing studs 22 gauge or lighter, Speed Klamps™-factory installed	3	5-11/16	3-3/4	14524	20	19

* Indicates model shown • See page 7 for Attachment Coding descriptions

Allied Moulded Products, Inc., Bryan, OH 43506 • ph: 419-636-4217 • fax: 800-237-7269 • www.alliedmoulded.com

