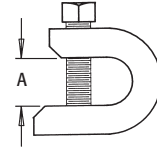


Beam Clamps



Plated steel.

CATALOG NUMBER	UPC/DCI/NAED MFG #018997	STATIC LOAD RATING	TRADE SIZE	UNIT PKG	STD PKG	DIM A	THREADED ROD SIZE
BC25	23250	75 LBS	1	25	100	.608	1/4-20
BC38	23380	200 LBS	2	25	100	.930	3/8-16

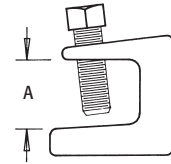


Beam Clamps

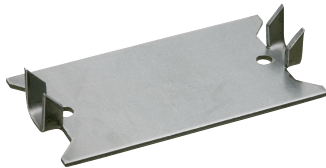


Malleable iron. Plated.

CATALOG NUMBER	UPC/DCI/NAED MFG #018997	STATIC LOAD RATING	TRADE SIZE	UNIT PKG	STD PKG	DIM A	THREADED ROD SIZE
MBC25	34810	125 LBS	1	25	100	.772	1/4-20
MBC25A	42321	125 LBS	1	25	100	.772	10-24
MBC26	42326	300 LBS	1-1/2	50	50	.878	5/16-18
MBC27	42327	300 LBS	2	50	50	.878	3/8-16
MBC28	42328	600 LBS	2-1/2	25	25	1.108	1/2-13

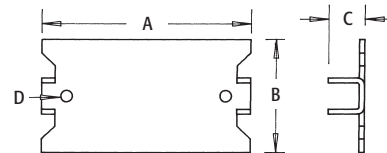


Safety Plate

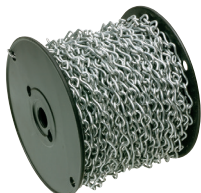


Flat 16 gauge steel.

CATALOG NUMBER	UPC/DCI/NAED MFG #018997	TRADE SIZE	UNIT PKG	STD PKG	DIM A	DIM B	DIM C	DIM D
SP100	17100	1-1/2 x 2-3/4	100	600	2.750	1.500	.475	.155



Jack Chain



Zinc-plated steel. 100 feet per steel reel. Maximum load limit 25 lbs.

CATALOG NUMBER	UPC/DCI/NAED MFG #018997	SIZE	UNIT CTN	STD CTN
JC12	13120	1/2	100 ft	100 ft