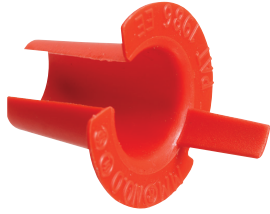
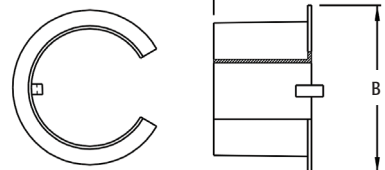


Anti-Short Bushings



Plastic.

| CATALOG NUMBER | UPC/DCI/NAED MFG #018997 | TRADE SIZE | CABLE SIZES | STD PKG | DIM A | DIM B |
|----------------|--------------------------|-------------|--|---------|-------|-------|
| AS0 | 10500 | 5/16" | 14/2, 14/3, 12/2 | 100/BAG | .590 | .680 |
| AS1 | 10510 | 3/8" | 14/4, 12/3, 6/1, 4/1 | 100/BAG | .630 | .758 |
| AS2 | 10520 | 7/16" | 12/4, 10/2, 10/3, 2/1 | 50/BAG | .680 | .920 |
| AS3 | 10530 | 1/2" | 10/4, 8/2, 8/3, 1/1 | 50/BAG | .770 | 1.130 |
| AS4 | 10540 | 3/4" | 8/4, 6/2, 6/3, 6/4, 4/2, 4/3 | 50/BAG | .880 | 1.340 |
| AS5 | 06052 | 1" | 3-1, 2-1, 2-1/10, 1-300MCM, 1-50MCM, 1-400MCM, 1-450MCM, 1-500MCM | 25/BAG | 1.038 | 1.460 |
| AS6 | 06054 | 1-1/4" | 4-1, 4-1/10, 4-2/0, 3-1/0, 3-2/0, 3-3/0, 2-2/0, 2-3/0, 2-4/0, 1-600MCM, 1-650MCM, 1-700MCM, 1-750MCM, 1-800MCM, 1-900MCM | 10/BAG | 1.100 | 1.720 |
| AS7 | 06056 | 1-1/2" | 4-3/0, 4-4/0, 3-4/0, 3-250MCM, 3-300MCM, 2-250MCM, 2-300MCM, 2-350MCM, 1-1000MCM | 10/BAG | 1.162 | 2.175 |
| AS8 | 06058 | 2 TO 2-1/2" | 4-250MCM, 4-300MCM, 4-350MCM, 4-400MCM, 4-450MCM, 4-500MCM, 3-350MCM, 3-400MCM, 3-450MCM, 3-500MCM, 2-400MCM, 2-450MCM, 2-500MCM | 10/BAG | 1.330 | 2.625 |



1-Hole AC/MC Strap



310



311

Plated steel.

| CATALOG NUMBER | UPC/DCI/NAED MFG #018997 | CABLE RANGE | CABLE SIZES | UNIT PKG | STD PKG | DIM A | DIM B | DIM C |
|----------------|--------------------------|-------------|--|----------|---------|-------|-------|-------|
| 310 | 00310 | .503-.580 | 14/4, 14/3, 12/4, 12/3, 10/3, 10/2, 12/2 | 100 | 1000 | 1.285 | .550 | .750 |
| 311 | 84174 | .200-.320 | #4 and #2 bare copper | 100 | 1000 | 1.125 | .210 | .500 |

