

VA / VD

Cable to Steel Surface

Mold Information:

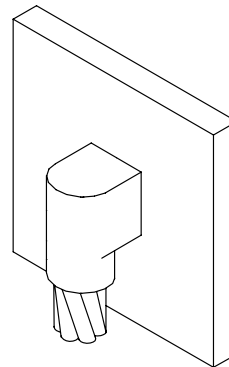
- Molds listed are for stranded cable. For solid conductor, add suffix "S" after conductor number. i.e. 4S = 4 AWG solid conductor.
- Price Key is the **Bold Letter** in the Mold Part No.
- For **VA** mold Wear Plates, add suffix "WP" to the end of the Mold Part No. See page 327 for details.

Required Tools & Accessories:

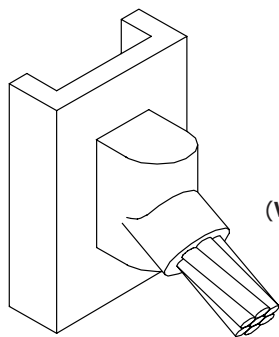
- MH1 - Handle for "B" and "K" Price Key Molds
- MH2 - Handle for "C" Price Key Molds

Recommended Tools & Accessories:

- CCBRSH1 - Card Cloth Brush
- MCBRSH1 - Mold Cleaning Brush
- MSKIT - Magnetic Support Kit



VD
(Vertical Down)



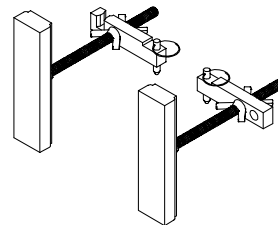
VA
(Vertical Angle 45°)

VD Connection Type

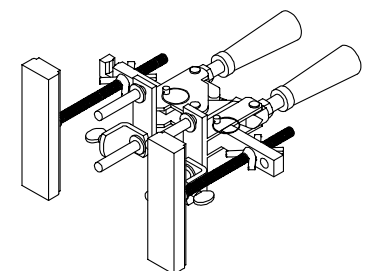
Cable Size	Mold Part No.	Weld Metal
#4	VD-4 B	UWM65
#2 Sol	VD-2 SB	UWM65
#2	VD-2 B	UWM65
#1	VD-1 B	UWM90
1/0	VD-1/0 B	UWM115
2/0	VD-2/0 B	UWM115
3/0	VD-3/0 B	UWM150
4/0	VD-4/0 B	UWM150
250 MCM	VD-25 CM B	UWM200
300 MCM	VD-3 CM B	UWM200
350 MCM	VD-35 CM B	UWM250
500 MCM	VD-5 CM K	2-UWM150

VA Connection Type

Cable Size	Mold Part No.	Weld Metal
#4	VA-4 B	UWM45
#3	VA-3 B	UWM45
#2 Sol	VA-2 SB	UWM45
#2	VA-2 B	UWM45
#1	VA-1 B	UWM65
1/0	VA-1/0 B	UWM90
2/0	VA-2/0 B	UWM90
3/0	VA-3/0 B	UWM115
4/0	VA-4/0 B	UWM115
250 MCM	VA-25 CM B	UWM115
300 MCM	VA-3 CM B	UWM150
350 MCM	VA-35 CM B	UWM200
500 MCM	VA-5 CM B	UWM200
750 MCM	VA-75 CM C	2-UWM150
1000 MCM	VA-1 MM C	2-UWM200



MSKIT



MSKIT with Mold Handle