

Catalog Number	
Notes	Type

FEATURES & SPECIFICATIONS

INTENDED USE

For applications that require the clean appearance of a flat-bottom diffuser. Provides high light levels for storage rooms, offices or retail applications.

ATTRIBUTES

Linear side prisms control brightness, pyramidal bottom prisms minimize lamp image. Diffuser hinges open from either side for easy maintenance. Full depth, white enamel end plates.

CONSTRUCTION

Constructed to comply with New York City electric code. Made in USA.

Die-formed from code gauge cold-rolled steel. Channel cover snaps into place without the use of tools. Full end cap factory installed to reduce job site labor. Diffuser is extruded clear acrylic.

FINISH

Five-stage iron-phosphate pretreatment ensures superior paint adhesion and rust resistance. Finished with high-gloss, baked white enamel.

ELECTRICAL SYSTEM

Thermally protected, resetting, Class P, HPF, UL listed, CSA Certified ballast is standard. Energy saving and electronic ballasts are sound rated A.

Luminaire is suitable for damp locations. AWM, TFN or THHN wire used throughout, rated for required temperatures.

INSTALLATION

For surface or stem mounting, individual or row installation.

LISTING

UL Listed.

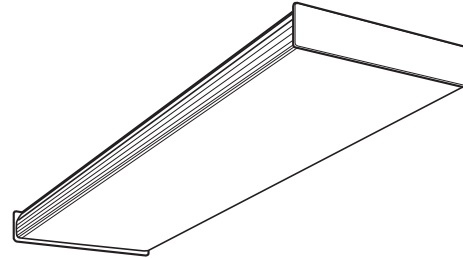
WARRANTY

Guaranteed for one year against mechanical defects in manufacture.

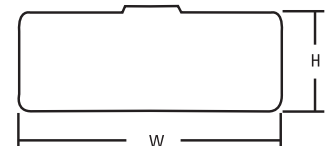
NOTE: Specifications subject to change without notice.

Square-Basket Wraparound

SB NY



NARROW BODY
2', 4' or 8' lengths
2 lamps



Specifications

Length: 24" (610), 48" (1219) or 96" (2348)

Width: 8-5/16" (212)

Height: 2-7/8" (73)

All dimensions are inches (millimeters).

ORDERING INFORMATION

For shortest lead times, configure product using **standard options (shown in bold)**.

Example: SB 2 32 MVOLT GEB10IS NY

SB 2		MVOLT		Options	
Series/No. lamps	Lamp type	Voltage			
SB 2 2 lamps, 8-1/3" wide	17 17W T8 (24") 32 32W T8 (48")	MVOLT¹	GEB10IS	T8 electronic ballast, ≤10 THD, instant start	
For tandem double-length unit, add prefix T. Example: TSB			EL	Emergency battery pack (nominal 300 lumens, see Life Safety section)	
			EL14	Emergency battery pack (nominal 1200 lumens, see Life Safety section)	
			NY	I.B.E.W. union made, NYC code compliant	
			NY3	I.B.E.W. Local 3 union made	
			Accessories (Order as separate catalog number.)		
			SQ_	Swivel stem hanger (specify length in 2" increments)	
			1B	Ceiling spacer (1-1/2" to 2-1/2" from ceiling)	
			DSH24	Double stem hanger for 4' fixtures, 24" stems ²	

NOTES:

1 MVOLT (120-277 volt).

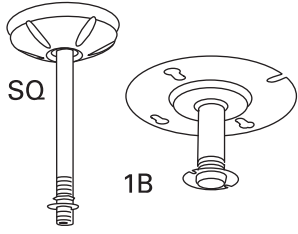
SB NY Square Basket Wraparound, Narrow Body

MOUNTING DATA

For unit or row installation. Surface or stem mounting.

UNIT INSTALLATION — Minimum of two hangers required.

ROW INSTALLATION — One hanger per fixture plus one per row required.

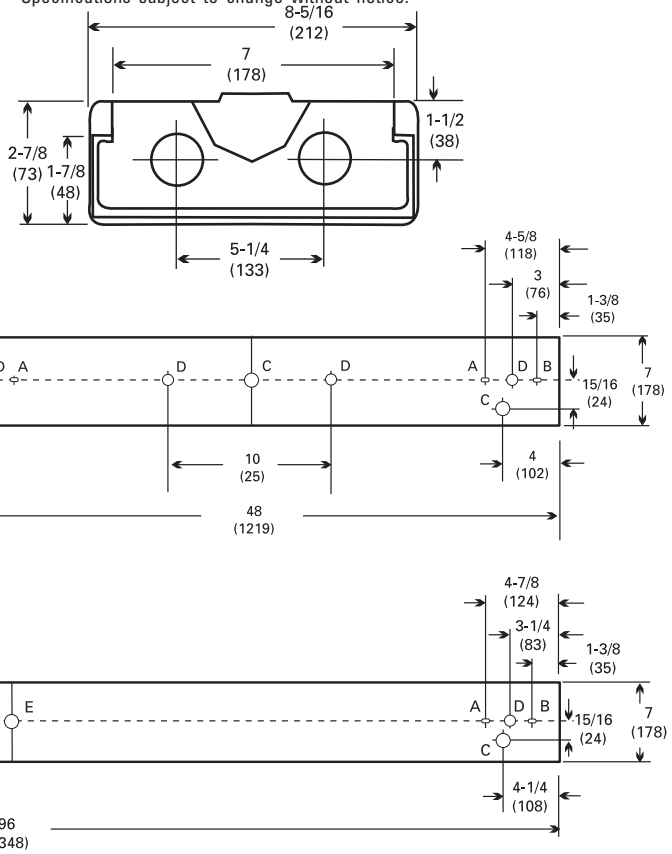


- A = 1/4 x 1/2 (64 x 13) Oval Hole
- B = 1/4 x 1/2 (64 x 13) K.O.
- C = 7/8 (22) Dia. K.O.
- D = 11/16 (17) Dia. K.O.
- E = 2 (51) Dia. K.O.

DIMENSIONS

All dimensions are inches (millimeters).

Specifications subject to change without notice.



PHOTOMETRICS

Calculated using the zonal cavity method in accordance with IESNA LM41 procedure. Floor reflectances are 20%. Lamp configurations shown are typical. All data based on 25°C. Full photometric data on these and other configurations available upon request.

SB 2 32

Report LTL 5048 – Lumens per lamp = 3050

S/MH (along) 1.2 (across) 1.3

Coefficient of Utilization

Ceiling	80%			70%			50%			0%
Wall	70%	50%	30%	70%	50%	30%	50%	30%	10%	0%
0	87	87	87	84	84	84	78	78	78	65
1	80	76	73	77	74	71	69	67	65	55
2	73	67	63	70	65	61	61	57	54	47
3	67	60	54	65	58	53	55	50	47	41
4	62	54	47	59	52	46	49	44	40	35
5	57	48	41	55	46	40	44	39	35	30
6	52	43	37	50	42	36	39	34	30	27
7	48	39	32	47	38	32	36	30	27	23
8	45	35	29	43	34	28	32	27	23	20
9	41	31	25	40	30	25	29	24	20	18
10	38	28	23	37	28	22	26	21	18	15

Zonal Lumens Summary

Zone	Lumens	%Lamp	%Fixture
0-30	1179	19.3	25.7
0-40	1927	31.6	42.0
0-60	3195	52.4	69.7
0-90	3984	65.3	86.9
90-180	601	9.9	13.1
0-180	4586	75.2	100.0

