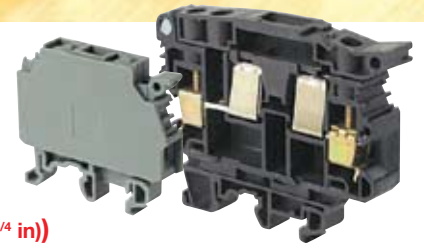
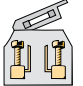
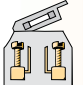
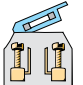
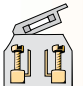




Compression clamp



Fuse holder terminal blocks (5 x 20; 5 x 25; 6.35 x 25.4 (1/4 x 1 in); 6.35 x 32 mm (1/4 x 1 1/4 in))

Block	Rated wire size	Spacing	Rated current	Part/number	End section	Comb type jumper bar
 M 4/8.SF ①	22-12 AWG	8 mm	10 A	Grey 0115 657.25 With test DIA 2 mm : Grey 0115 662.22	Grey 0116 951.15	10 poles 0173 523.11
 M 4/8.SFL ①	22-12 AWG	6 mm	10 A	With fusion indicator 110-230 V : Grey 0115 661.21 With fusion indicator 24 V : Grey 0115 663.23	Grey 0116 951.15	10 poles 0173 523.11
 M 4/8.SN	22-12 AWG	8 mm	10 A	Grey/Blue 0115 659.07 With test DIA 2 mm : Grey/Blue 0115 668.00	Grey 0116 951.15	10 poles 0173 523.11
 ML 10/13.SF ②	22-10 AWG	13 mm	25 A	Black 0199 095.13 With fusion indicator 110-230 V : Black 0199 168.00 With fusion indicator 24 V : Black 0199 166.26	Black 0199 635.24	10 poles 0173 510.20



Triple deck terminal blocks

Block	Rated wire size	Spacing	Rated current	Part/number	End section	Not IP20 jumper bar
 D 2,5/6.DA	20-12 AWG	6 mm	26 A	Grey 0115 541.11 ③	Grey 0116 771.20	2 poles 0178 024.25 3 poles 0178 025.26 4 poles 0178 026.27 5 poles 0178 027.20 10 poles 0178 032.25
 D 4/6.T3	22-12 AWG	6 mm	20 A	Grey 0299 683.01 ③	Closed block	2 poles 0173 217.26 ④ 3 poles 0173 218.07 ④ 4 poles 0173 219.00 ④ 5 poles 0173 221.22 ④ 10 poles 0173 226.27 ④

① For 5 x 20 and 5 x 25 fuses.

② For 6.35 x 25.4 and 6.35 x 32 fuses.

③ DIN 3 only.

④ For upper deck only.