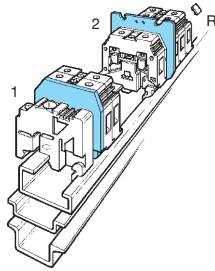


Ground terminal blocks electrically connected to the mounting rail

Screw clamp

DIN 1 - 3



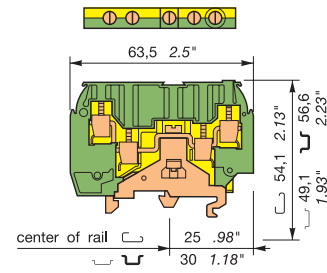
refer to the section "Special Applications" for part numbers and characteristics.

Characteristics

Wire size	Screw clamp	Rigid		Flexible						
		IEC NFC-DIN	UL pending	CSA pending	IEC NFC-DIN	UL pending	CSA pending			
0,2-4 mm ²		22-10 AWG	12 AWG max.	0,2-4 mm ²		24-10 AWG	24-10 AWG			
0,22-4 mm ²		22-10 AWG	12 AWG max.	0,22-4 mm ²		24-10 AWG	24-10 AWG			
Short circuit current		480A/1s		480A/1s		720A/1s				
Rated wire size / Gauge		4 mm ² /A4		10 AWG		10 AWG				
Other characteristics		Wire stripping length	Recomm. screwdriver	Recomm. torque	Protection	Wire stripping length	Recomm. screwdriver	Recomm. torque	Protection	
		9,5 mm .37"	4 mm .16"	0,5-0,8 Nm 4.4-7.1 lb.in		9,5 mm .37"	4 mm .16"	0,5-0,8 Nm 4.4-7.1 lb.in	IP 20 NEMA 1	
Approvals										
Accessories		Type	Part number	Type	Part number	Type	Part number	Type	Part number	
1	End section	green yellow	FEM4AP V0 th. 3 mm 1SNA 199 879 R0100	closed block		FEM6 th. 2,8 mm 1SNA 103 062 R2100		SCF6 th. 3 mm 1SNA 118 707 R0300		
2	Separator end section	grey								
On rail : Recomm.screwdriver/Recomm.torque		4 mm .16" / 0,8 Nm 7.0 lb.in			4 mm .16" / 0,8 Nm 7.0 lb.in			4 mm .16" / 0,8 Nm 7.0 lb.in		
R	See markers	marking method	RC65 - RC610 RCT610	RC65		RC65 - RC610 RCT810				

M 4/6.4A.P

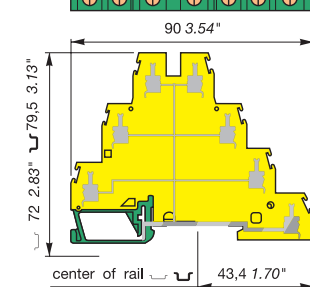
Spacing 6 mm + 0,05 (.238")



Type	Part number
Green-yellow - UL 94 V0	
M 4/6.4A.P.V0	1SNA 195 638 R2300
Terminal block for ground wire, same size as M 4/6.4A terminal block.	

D 4/6.P.T1

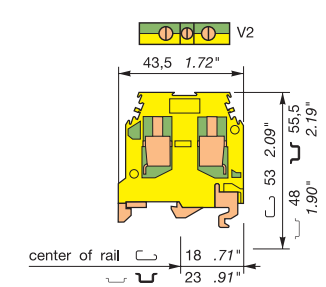
Spacing 6 mm + 0,05 (.238")



Type	Part number
Green-yellow - UL 94 V0	
D 4/6.P.T1	1SNA 199 220 R0000
Terminal block for ground wire, same size as D 4/6.T... terminal block.	

M 6/8.P

Spacing 8 mm - 0,05 (.315")

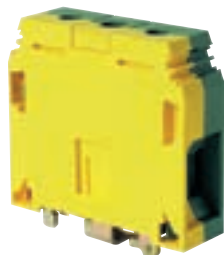


Type	Part number
Green-yellow	
M 6/8.P	1SNA 165 114 R1700
Terminal block for ground wire, same size as M 6/8 terminal block.	

Ground terminal blocks electrically connected to the mounting rail

Screw clamp

DIN 1 - 3



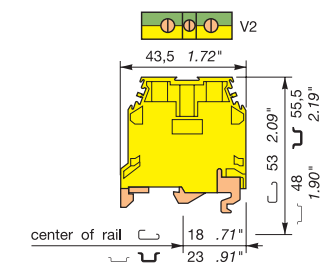
refer to the section "Special Applications" for part numbers and characteristics.

Characteristics

Wire size	Screw clamp	Rigid		Flexible						
		IEC NFC-DIN	UL pending	CSA pending	IEC NFC-DIN	UL pending	CSA pending			
0,5-16 mm ²		20-6 AWG	18-6 AWG	0,5-16 mm ²		20-6 AWG	18-6 AWG			
0,5-10 mm ²		20-6 AWG	18-6 AWG	0,5-10 mm ²		20-6 AWG	18-6 AWG			
Short circuit current		1200A/1s		1200A/1s		4200A/1s				
Rated wire size / Gauge		10 mm ² /B6		6 AWG		6 AWG				
Other characteristics		Wire stripping length	Recomm. screwdriver	Recomm. torque	Protection	Wire stripping length	Recomm. screwdriver	Recomm. torque	Protection	
		12 mm .47"	5,5-6 mm .22" - 24"	1,2-1,4 Nm 10.6-12.4 lb.in		17 mm .67"	8 mm .32"	2,8-3 Nm 24.9-26.7 lb.in		
Approvals										
Accessories		Type	Part number	Type	Part number	Type	Part number	Type	Part number	
1	End section	closed block		closed block		closed block		closed block		
2	Separator end section	grey	SCFM6 th. 3 mm 1SNA 114 825 R0500	SCFM6 th. 3 mm 1SNA 114 825 R0500		5,5 mm .22" / 1,0 Nm 9.0 lb.in				
On rail : Recomm.screwdriver/Recomm.torque		4 mm .16" / 0,8 Nm 7.0 lb.in			5,5 mm .22" / 1,0 Nm 9.0 lb.in			5,5 mm .22" / 1,0 Nm 9.0 lb.in		
R	See markers	marking method	RCT810 RC810 RC1010	RCT810 RC810 RC1010		RTM9 RC810 RC1010				

M 10/10.P

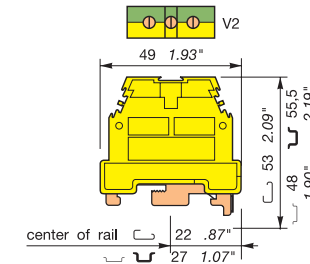
Spacing 10 mm - 0,05 (.394")



Type	Part number
Green-yellow	
M 10/10.P	1SNA 165 115 R1000
Terminal block for ground wire, same size as M 10/10 terminal block.	

M 16/12.P

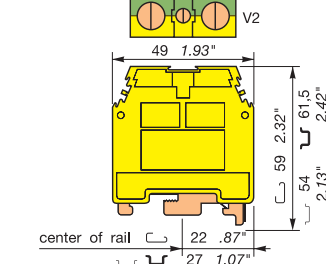
Spacing 12 mm - 0.1 (.473")



Type	Part number
Green-yellow	
M 16/12.P	1SNA 165 130 R2300
Terminal block for ground wire, same size as M 16/12 terminal block.	

M 35/16.P

Spacing 16 mm - 0.1 (.630")



Type	Part number
Green-yellow	
M 35/16.P	1SNA 165 111 R1400
Terminal block for ground wire, same size as M 35/16 terminal block	