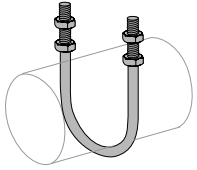


**POWER-STRUT®** Part No. Std Wt./ List Price  
& Length Fin. Qty 100 per 100 pcs

**PS 137**

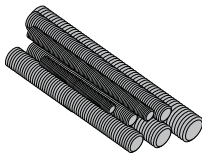
"U" Bolt With Nuts Long Tangent



PS 137 1/2	EG	100	21	\$432.03
PS 137 3/4	EG	100	28	\$442.75
PS 137 1	EG	100	29	\$455.92
PS 137 1-1/4	EG	50	31	\$535.76
PS 137 1-1/2	EG	50	33	\$551.23
PS 137 2	EG	50	36	\$559.38
PS 137 2-1/2	EG	50	78	\$941.97
PS 137 3	EG	50	88	\$1026.29
PS 137 3-1/2	EG	25	94	\$1026.29
PS 137 4	EG	25	102	\$1118.75

**PS 146**

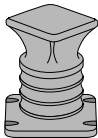
Continuous Threaded Rod



PS 146 1/4" x 6'	EG	300'	12	\$77.36
PS 146 1/4" x 6'	PL	300'	12	\$55.27
PS 146 1/4" x 10'	EG	500'	12	\$77.36
PS 146 1/4" x 10'	PL	500'	12	\$55.27
PS 146 3/8" x 6'	EG	120'	29	\$120.30
PS 146 3/8" x 6'	PL	120'	29	\$93.28
PS 146 3/8" x 10'	EG	250'	29	\$120.30
PS 146 3/8" x 10'	PL	250'	29	\$93.28
PS 146 1/2" x 6'	EG	72'	53	\$226.74
PS 146 1/2" x 6'	PL	72'	53	\$140.52
PS 146 1/2" x 10'	EG	120'	53	\$226.74
PS 146 1/2" x 10'	PL	120'	53	\$140.52
PS 146 5/8" x 6'	EG	48'	84	\$372.28
PS 146 5/8" x 6'	PL	48'	84	\$245.75
PS 146 5/8" x 10'	EG	80'	84	\$372.28
PS 146 5/8" x 10'	PL	80'	84	\$245.75
PS 146 3/4 x 6'	EG	30'	123	\$554.23
PS 146 3/4 x 6'	PL	30'	123	\$339.70
PS 146 3/4" x 10'	EG	50'	123	\$554.23
PS 146 3/4" x 10'	PL	50'	123	\$339.70

**PS 152**

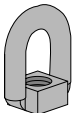
Screw Concrete Insert



PS 152 3/8	PL	3/8" Rod	35	31	\$1784.16
PS 152 1/2	PL	1/2" Rod	35	32	\$2041.59
PS 152 5/8	PL	5/8" Rod	30	37	\$2476.45
PS 152 3/4	PL	3/4" Rod	15	64	\$3010.04
PS 152 7/8	PL	7/8" Rod	15	71	\$3189.25

**PS 202**

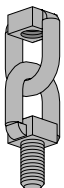
Eyelet



PS 202 3/8	EG	3/8"	100	15	\$1844.17
PS 202 1/2	EG	1/2"	50	18	\$2006.01

**PS 203**

Linked Eyelet With Stud



PS 203 3/8	EG	3/8"	100	27	\$1870.24
PS 203 1/2	EG	1/2"	50	45	\$2034.12

**POWER-STRUT®** Part No. Std Wt./ List Price  
& Length Fin. Qty 100 per 100 pcs

**PS 204**

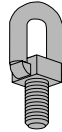
Linked Eyelet



PS 204 3/8	EG	100	23	\$2263.30
PS 204 1/2	EG	50	32	\$2331.05

**PS 205**

Eyelet With Stud



PS 205 3/8	EG	100	16	\$1249.91
PS 205 1/2	EG	50	20	\$1447.32

**PS 209**

Flat Washer



PS 209 1/4	EG	200	0.7	\$12.08
PS 209 3/8	EG	100	2	\$19.01
PS 209 1/2	EG	100	4	\$34.62
PS 209 5/8	EG	100	8	\$73.04
PS 209 3/4	EG	100	11	\$123.28

**PS 211**

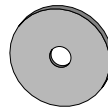
Lock Washer



PS 211 1/4	EG	100	0.3	\$17.65
PS 211 3/8	EG	100	1	\$18.61
PS 211 1/2	EG	100	2	\$28.79

**PS 230**

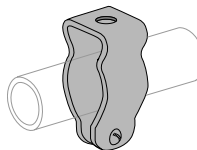
Fender Washer



PS 230 1/4	EG	100	3.3	\$70.74
PS 230 3/8	EG	100	3	\$72.78
PS 230 1/2	EG	100	3	\$94.08

**PS 270**

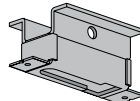
Conduit Clamp



PS 270 3/8-1/2	EG	50	6	\$86.75
PS 270 3/4	EG	50	8	\$100.33
PS 270 1	EG	50	9	\$109.15
PS 270 1-1/4	EG	25	11	\$142.02
PS 270 1-1/2	EG	25	19	\$207.19
PS 270 2	EG	25	27	\$262.44

**PS 285**

Light Weight Concrete Insert



PS 285	EG	Bulk	46	\$662.42
PS 285	PL	Bulk	46	\$348.37