

Cushioned Clamps

Cushioned Clamps for Pipe

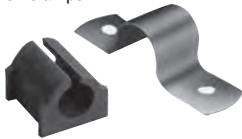


		Steel	Stainless Steel
Inner Diameter	Outer Diameter	Part No.	Part No.
1/4"	1/4" Pipe	46803	0127177
3/8"	3/8" Pipe	46805	-
1/2"	1/2" Pipe	46807	0127181
3/4"	3/4" Pipe	46810	0127184
1"	1" Pipe	46813	0127187
1-1/4"	1-1/4" Pipe	46817	0127191
5"	5" Pipe	46836	-
6"	6" Pipe	46838	-

Omega Series Cushion Clamps

Surface Mount Cushion Clamps

- Channel mounted clamping systems are ideal for multiple line runs. Cush-A-Clamps absorb vibrations and reduce unwanted noise.



		Steel	Stainless Steel
Inner Diameter	Outer Diameter	Part No.	Part No.
1/4"	1/4" Tube	0127213	0127234
3/8"	3/8" Tube	0127214	0127235
1/2"	1/2" Tube	0127215	0127236
5/8"	5/8" Tube	0127216	0127237
3/4"	3/4" Tube	0127217	0127238
7/8"	7/8" Tube	0127218	0127239
1"	1" Tube	0127219	0127240
1-1/8"	1-1/8" Tube	0127221	-
1-1/4"	1-1/4" Tube	0127222	0127243
1-3/8"	1-3/8" Tube	0127224	0127245
1-1/2"	1-1/2" Tube	0127225	0127246
1-5/8"	1-5/8" Tube	0127226	0127247
1-3/4"	1-3/4" Tube	0127228	0127249
1-7/8"	1-7/8" Tube	0127229	0127250
2"	2" Tube	0127230	0127251
2-1/8"	2-1/8" Tube	-	0127252
2-3/8"	2-3/8" Tube	0127232	0127253

Cushioned U-Bolt Pipe Clamps

- Channel mounted clamping systems are ideal for multiple line runs. Cush-A-Clamps absorb vibrations and reduce unwanted noise.



		Steel	Stainless Steel
Inner Diameter	Outer Diameter	Part No.	Part No.
1/2"	1/2" Pipe	0127255	0127270
3/4"	3/4" Pipe	0127256	0127271
1"	1" Pipe	0127257	0127272
1-1/4"	1-1/4" Pipe	0127258	0127273
1-1/2"	1-1/2" Pipe	0127259	0127274
2"	2" Pipe	0127260	0127275
2-1/2"	2-1/2" Pipe	0127261	0127276
3"	3" Pipe	0127262	0127277
3-1/2"	3-1/2" Pipe	0127263	0127278
4"	4" Pipe	0127264	0127279
5"	5" Pipe	0127265	0127280
6"	6" Pipe	0127266	0127281
8"	8" Pipe	0127267	0127282
10"	10" Pipe	0127268	0127283
12"	12" Pipe	0127269	0127284

Cushion Rolls

Cush-A-Strip®

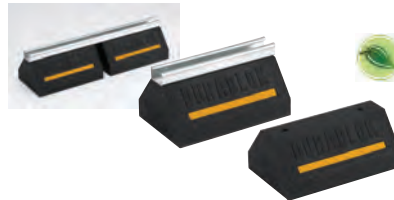
Manufactured from a thermoplastic elastomer, Cush-A-Strip is designed for use from -50°F to 275°F. Packaged in 20 foot rolls in an E-Z dispenser box for convenience in handling and storage. Marked in 1/4" increments for fast measuring and cutting, while eliminating waste.



Part No.
46839

Rooftop Pipe & Equipment Supports

Dura-Blok Rooftop Support



Part No.	Length	Height	Width
11122917	9.6"	4"	6"
11122918	4.8"	5"	6"
11122919	9.6"	5"	6"
11122920	20.2"	5"	6"

Hanger Systems

Loop Hangers



Galvanized steel cable hanger ideal for choking around bar joists, beams, roof trusses, and unistrut channel.



Size	Work Load Limit	5 ft	10 ft	15 ft	20 ft	30 ft
		Part No.	Part No.	Part No.	Part No.	Part No.
#1	22 lb	11124410	-	11124412	-	-
#2	100 lb	11124414	11124415	11124416	11124417	-
#3	200 lb	11124419	11124420	11124421	11124422	-
#4	495 lb	-	-	11124426	-	11124427
#5	715 lb	-	-	-	-	11124431

Stud Hangers

Galvanized steel cable hanger for installing services into concrete (using drop-in anchors or nuts), metal decking, metal brackets using nuts, or clamps and clevis hangers with 1/4" female threads.



Size	Work Load Limit	5 ft	10 ft	15 ft	30 ft
		Part No.	Part No.	Part No.	Part No.
#2	100 lb	11124448	11124449	11124450	-
#3	200 lb	11124456	11124457	11124458	11124459

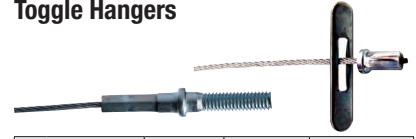
90 Degree Eyelet Hanger

Galvanized steel cable hanger for fixing into concrete, steel, and wood. Accommodates a 1/4" fastener or anchor.



Size	Work Load Limit	5 ft	10 ft	15 ft
		Part No.	Part No.	Part No.
#2	100 lb	11124464	11124465	11124466

Toggle Hangers



		5 ft	10 ft	15 ft
Size	Work Load Limit	Part No.	Part No.	Part No.
#2	100 lb	11124436	11124437	11124438
#3	200 lb	11124440	-	-

Straight Eyelet Hanger

Galvanized steel cable hanger for a variety of applications that require bolting to brackets or fixtures.



		10 ft	20 ft
Size	Work Load Limit	Part No.	Part No.
#2	100 lb	11124468	11124469

Hook Hangers

Galvanized steel cable hanger for snapping onto a beam or purlin clip, any clip with a 1/4" hole, cable basket & tray, light fixtures, etc.



		5 ft	10 ft	15 ft
Size	Work Load Limit	Part No.	Part No.	Part No.
#2	100 lb	11124470	11124471	11124472

Y-Fit Toggle Hangers

Galvanized steel cable hanger with a single point of suspension at top, and two connection points at bottom, each incorporating a restraining plate and end stop. Ideal for fixing into 5/16" hole diameters of light fixtures.



		5 ft	10 ft	15 ft
Size	Work Load Limit	Part No.	Part No.	Part No.
#2	100 lb	11124500	11124501	11124502

Y-Fit Hook Hangers

Galvanized steel cable hanger with a single point of suspension at top, and two connection points at bottom. Hooks ideal for cable basket & tray, light fixtures, and any suspended service with 1/4" min. holes in hanging bracket.



		5 ft	10 ft	15 ft
Size	Work Load Limit	Part No.	Part No.	Part No.
#2	100 lb	11124504	11124505	11124506
#3	200 lb	11124508	11124509	11124510

Hanger System Accessories

Grippler Tensioning Tool



Tool for quickly tensioning GRIPPLE fastener on the cable. Applies up to 880 lbs of load.



Part No.	Application
11124527	Assists in leveling for #4 & #5 cables