

Murray Rock Solid Load Centers

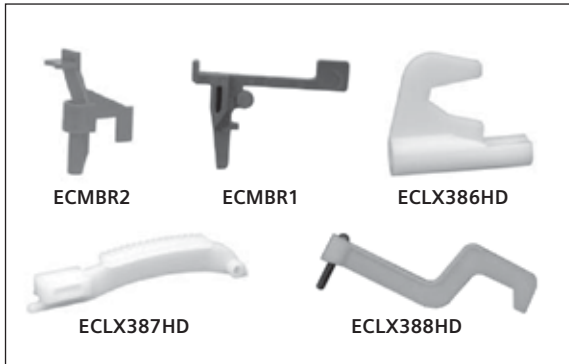
Accessories

Hubs



Catalog Number	Description	Pack Quantity
ECHS075	3/4" Hub	10
ECHS100	1" Hub	10
ECHS125	1 1/4" Hub	10
ECHS150	1 1/2" Hub	10
ECHS200	2" Hub	10
ECHS250	2 1/2" Hub	10

Backfeed Main Breaker Hold Down Kits



Catalog Number	Description	Pack Quantity
ECMBR2	For use on MP-T, MP-HT, & MP-MT breakers in Rock Solid Load Centers	25
ECMBR1	For use on MP-T, MP-HT, & MP-MT breakers in 2-8 circuit Load Centers	25
ECLX378M	For use on MD-T, MD-HT, & MD-MT breakers on old style (pre 2003) load centers (12-42 circuit)	25
ECLX386HD	For use on MP-T, MP-HT, & MP-MT breakers (15-60A) on old style (pre 2003) load centers (12-42 circuit)	25
ECLX387HD	For use on MP-T, MP-HT, & MP-MT breakers (70-125A) on old style (pre 2003) load centers (12-42 circuit)	25
ECLX388HD	For use on MP-T, MP-HT, & MP-MT breakers (100-125A) on old style (pre 2003) load centers (12-42 circuit)	25

Miscellaneous



Catalog Number	Description	Pack Quantity
ECQFL2	Door lock for Rock Solid Load Centers	10
ECQF3	Filler plate (1")	10
ECMBF125	Filler plate for main breaker opening on 100-125A Rock Solid Load Centers. Use two QF3 filler plates for 150-225A load centers	25
LX0775F	Flush installation cover for 400A panels	1
ECTS2	6 Cover screws, combination cover	50 Bags
ECSMK1	Surface mount spacer kit provides 1/4" space between load center and wall	25

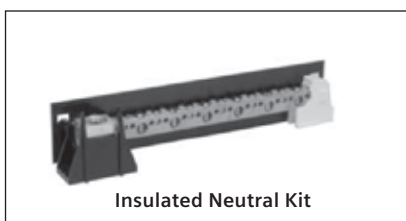
Main Breaker Kits



Catalog Number	Description	Pack Quantity
MBK100M	100A—For use on 100 & 125A Rock Solid Load Centers only	1
MBK125M	125A—For use on 125A Rock Solid Load Centers only	1
MBK150M	150A—For use on 150, 200, & 225A Rock Solid Load Centers only	1
MBK200M	200A—For use on 200 & 225A Rock Solid Load Centers only	1
MBK225M	225A—For use on 225A Rock Solid Load Centers only	1
ECMLK125	1 PH Main Lug Conversion Kit 100-125A	1
ECMLK225	1 PH Main Lug Conversion Kit 150-225A	1

Lug Kits

Ground Bars and Insulated Neutral Kits



Catalog Number	Description	Pack Quantity
ECLK2SC	#2/0 max. lug for 125 amp neutral feeder for 12-42 circuit devices	50
ECLX384M	CB enclosure ground lug	20

Catalog Number	Description	Pack Quantity
ECLX068M	4 small terminals—15/8" long	10
ECLX069M	5 small and 2 large terminals—3" long	10
ECLX071M	8 small and 3 large terminals—3 1/2" long	10
ECLX072M	11 small and 4 large terminals—4 5/8" long	10
ECLX073M	14 small and 5 large terminals—5 3/4" long	10
ECLX074M	17 small and 6 large terminals—7" long	10
ECLX075M	21 small and 7 large terminals—8" long	10
ECINSNB27	Insulated neutral bar with 27 positions	10
ECINSNB32	Insulated neutral bar with 32 positions	10
ECINSNB33	Insulated neutral bar with 33 positions and a 300 MCM lug	10
ECINSNB41	Insulated neutral bar with 41 positions and a 300 MCM lug	10
ECINSNB43	Insulated neutral bar with 43 positions	10