

# Murray 3 Phase Quick Reference Guide



Murray PL and ES Series Load Centers™

[www.murrayconnect.com](http://www.murrayconnect.com)



# Load Centers

## Siemens PL Series and ES Series Load Centers Overview

### PL Series:

- Convertible
- Invertible
- Insta-wire neutrals & grounds
- Ground bars included
- Tin-plated copper busbars
- Carton-in-carton packaging
- Lifetime warranty



PL Series 3-phase

### ES Series:

- Invertible
- Insta-wire neutrals & grounds
- Aluminum busbars
- Single piece carton packaging
- 10 year warranty



ES Series 3-phase

# PL Series Load Centers

## Features

Invertible for bottom feed application.

All devices convertible from main lug to main breaker and vice versa.

Mounting tabs on the trim hold it in place on the load center, freeing up both hands to drive the trim screws.

All devices are provided with 2 factory installed ground bars.

Combination head screw on the neutrals, ground, trim, upper pan, and bond screw provide installation flexibility.

The pre-positioned bond screw eliminates bond strap/screw assemblies, and reduces the risk of losing components in the field.

The patented INSTA-WIRE™ neutral/ground system allows for faster installation because screws are backed out, ready for wire insertion. The visible neutral and grounds system aids in the insertion of conductors.

A rigid, sturdy base pan provides the ruggedness required for the most harsh applications.

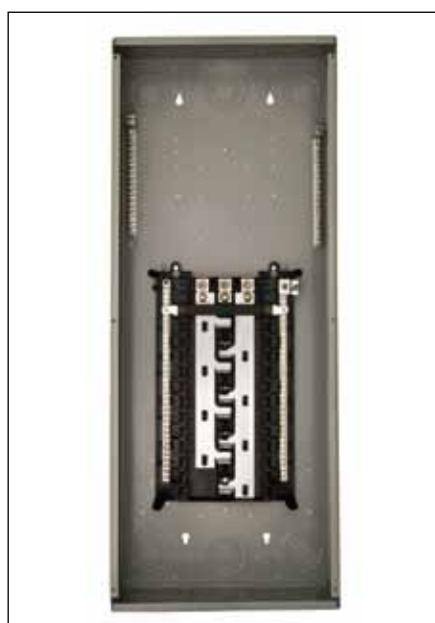
Copper Bus

PL Series Load Centers ship with trims packaged separately.

The outdoor enclosure has a slide hinge door for the easiest installation and can be removed by backing out only one screw.

# PL Series Three Phase Main Lug & Main Breaker Load Centers

3-phase, 3-wire, 240 Volt AC or 3-phase, 4-wire, 120/240 or 120/208 Volts AC



## Main Breaker/Convertible Load Centers 30-70 Circuits / 100-225 Amperes

Copper Bus<sup>®</sup>  
60/75°C Rated 22,000A IR<sup>①</sup>

Branch Circuits			Indoor Enclosure – NEMA Type 1		Outdoor Enclosure – NEMA Type 3R	
Amp Rating	No. of Spaces	No. of Circuits	Catalog Number	Enclosure Height (inches) <sup>③</sup>	Catalog Number	Enclosure Height (inches) <sup>④</sup>
100	30	42	P3042B3100CU <sup>②</sup>	30	—	—
150	24	42	P2442B3150CU	36	—	—
200	30	54	P3054B3200CU	39	PW3054B3200CU	38
200	42	60	P4260B3200CU	42	PW4260B3200CU	42
225	42	60	P4260B3225TCU <sup>⑥</sup>	49	—	—
225	54	70	P5470B3225CU	49	—	—

## Main Lug/Convertible Load Centers<sup>⑤</sup> 12-70 Circuits / 125-225 Amperes

Copper Bus<sup>®</sup>  
60/75° Rated 100,000A IR

Branch Circuits			Indoor Enclosure – NEMA Type 1		Outdoor Enclosure – NEMA Type 3R	
Amp Rating	No. of Spaces	No. of Circuits	Catalog Number	Enclosure Height (inches) <sup>③</sup>	Catalog Number	Enclosure Height (inches) <sup>④</sup>
125	12	24	P1224L3125CU <sup>②</sup>	21	PW1224L3125CU <sup>⑦</sup>	21
200	24	42	P2442L3200CU	36	PW2442L3200CU	35
200	30	54	P3054L3200CU	39	PW3054L3200CU	38
225	42	60	P4260L3225CU	42	PW4260L3225CU	42
225	54	70	P5470L3225CU	49	—	—

① May be installed on higher rated systems when protected by a circuit breaker with a higher AIR rating.

② Back fed main breaker.

③ Indoor enclosures are 14 1/4" wide by 3 7/8" deep.

④ Outdoor enclosures are 14 1/2" wide by 4 1/4" deep.

⑤ Suitable for use as service entrance equipment when not more than six main disconnecting means are provided. See article 230.71 of the NEC<sup>®</sup>.

⑥ Includes factory installed feed through lugs and is also non-convertible. Panel is rated to 42,000A IR.

⑦ Non-convertible to main breaker.

⑧ All load centers are provided with tin plated copper bus bars.

# PL Series Three Phase Unassembled Load Centers

3-phase, 3-wire, 240 Volt AC or 3-phase, 4-wire, 120/240 or 120/208 Volts AC



## Main Breaker Convertible Unassembled Load Centers 24-70 Circuits / 100-225 Amperes

Copper Bus<sup>⑤</sup>  
60/75°C Rated 22,000A IR<sup>①</sup>

Interiors				Enclosure		Trim Kit	
Amp Rating	No. of Spaces	No. of Circuits	Interior Catalog Number	Enclosure Height (inches) <sup>③</sup>	Enclosure Catalog Number	No. Breaker Spaces	Trim Catalog Number <sup>④</sup>
100	30	42	PI3042B3100CU <sup>②</sup>	30	3PE30	30	PT3042B3100
150	24	42	PI2442B3150CU	36	3PE36	24	PT2442X3150
200	30	54	PI3054B3200CU	39	3PE39	30	PT3054X3200
200	42	60	PI4260B3200CU	42	3PE42	42	PT4260X3200
225	54	70	PI5470B3225CU	49	3PE49	54	PT5470X3225

## Main Lug Convertible Unassembled Load Centers 12-70 Circuits / 125-225 Amperes

Copper Bus<sup>⑤</sup>  
60/75° Rated 100,000A IR

Interiors				Enclosure		Trim Kit	
Amp Rating	No. of Spaces	No. of Circuits	Interior Catalog Number	Enclosure Height (inches) <sup>③</sup>	Enclosure Catalog Number	No. Breaker Spaces	Trim Catalog Number <sup>④</sup>
125	12	24	PI1224L3125CU	21	3PE21	12	PT1224L3125
200	24	42	PI2442L3200CU	36	3PE36	24	PT2442X3200
200	30	54	PI3054L3200CU	39	3PE39	30	PT3054X3200
225	42	60	PI4260L3225CU	42	3PE42	42	PT4260X3225
225	54	70	PI5470L3225CU	49	3PE49	54	PT5470X3225

① May be installed on higher rated systems when protected by a circuit breaker with a higher AIR rating.

② Back fed main breaker.

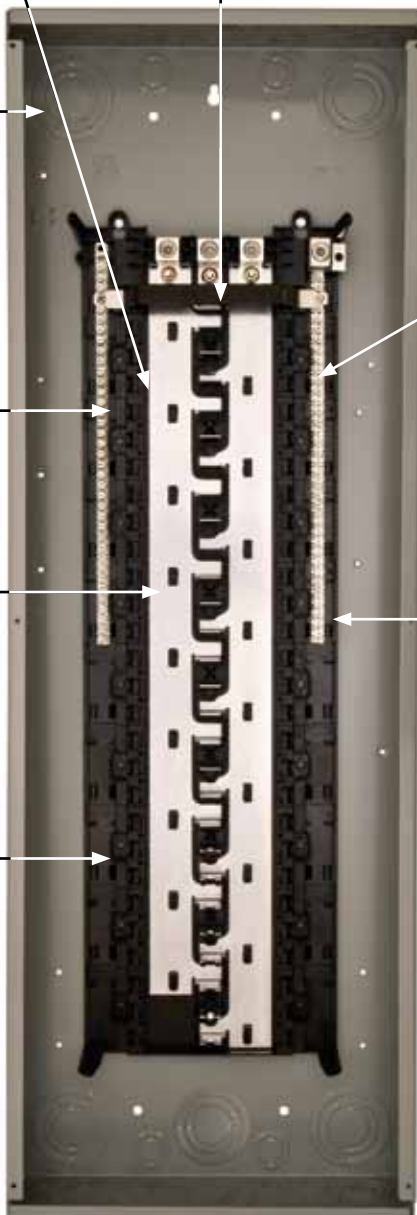
③ Indoor enclosures are 14 1/4" wide by 3 7/8" deep.

④ Trim catalog numbers with a "B" indicate for use with main breaker and is not convertible. "L" indicates for use with main lug and is not convertible. "X" indicates can be used with convertible interior.

⑤ All load center interiors are provided with tin plated copper bus bars.

# ES Series Load Centers

## Features



Main breaker convertible to main lug but main lug not convertible.

Invertible for bottom feed application.

Ground bar field installed (select skus with "G" suffix will have ground bar factory installed).

Combination head screw on the neutrals, ground, trim, upper pan, and bond screw provide installation flexibility.

Aluminum bus.

A rigid, sturdy base pan provides the ruggedness required for the most harsh applications.

Mounting tabs on the trim hold it in place on the load center, freeing up both hands to drive the trim screws.

The pre-positioned bond screw eliminates bond strap/screw assemblies, and reduces the risk of losing components in the field.

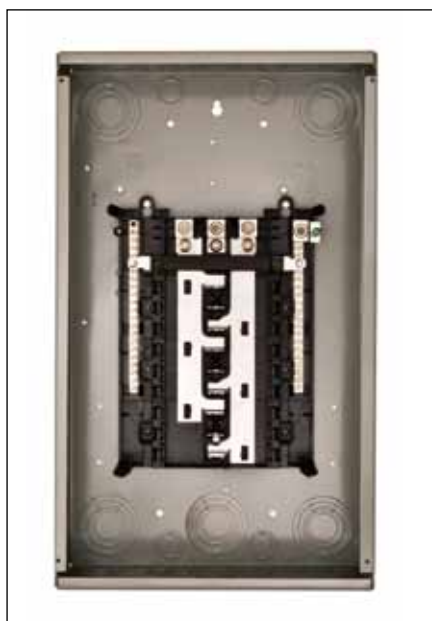
The patented INSTA-WIRE™ neutral/ground system allows for faster installation because screws are backed out, ready for wire insertion. The visible neutral and grounds system aids in the insertion of conductors.

The outdoor enclosure has a slide hinge door for the easiest installation and can be removed by backing out only one screw.

ES Series Load Centers ship in single piece carton.

# ES Series Three Phase Main Lug & Main Breaker Load Centers

3-phase, 3-wire, 240 Volt AC or 3-phase, 4-wire, 120/240 or 120/208 Volts AC



## Main Breaker/Convertible Load Centers 30-60 Circuits / 100-225 Amperes

Aluminum Bus  
60/75°C Rated 10,000A IR<sup>①</sup>

Branch Circuits			Indoor Enclosure – NEMA Type 1		Outdoor Enclosure – NEMA Type 3R	
Amp Rating	No. of Spaces	No. of Circuits	Catalog Number	Enclosure Height (inches) <sup>③</sup>	Catalog Number	Enclosure Height (inches) <sup>②</sup>
100	30	30	S3030B3100 <sup>②</sup>	30	—	—
100	30	42	S3042B3100 <sup>②</sup>	30	—	—
150	24	42	S2442B3150	36	SW2442B3150	35
150	42	42	S4242B3150	42	—	—
200	30	54	S3054B3200	39	SW3054B3200	38
200	42	60	S4260B3200	42	SW4260B3200	42
225	42	42	S4242B3225	42	SW4242B3225	42

## Main Lug/Non-Convertible Load Centers<sup>⑤⑥</sup> 12-70 Circuits / 125-225 Amperes

Aluminum Bus  
60/75° Rated 100,000A IR

Branch Circuits			Indoor Enclosure – NEMA Type 1		Outdoor Enclosure – NEMA Type 3R	
Amp Rating	No. of Spaces	No. of Circuits	Catalog Number	Enclosure Height (inches) <sup>③</sup>	Catalog Number	Enclosure Height (inches) <sup>②</sup>
125	12	24	S1224L3125	21	SW1224L3125	21
150	18	36	S1836L3150	24	SW1836L3150	23
150	24	42	S2442L3150	30	SW2442L3150	27
200	12	24	S1224L3200	21	SW1224L3200	21
200	24	42	S2442L3200	30	SW2442L3200	27
200	30	54	S3054L3200	30	SW3054L3200	35
225	42	60	S4260L3225	36	SW4260L3225	38
225	54	70	S5470L3225	42	—	—

① May be installed on higher rated systems when protected by a circuit breaker with a higher AIR rating.

② Back fed main breaker.

③ Indoor enclosures are 14 1/4" wide by 3 7/8" deep.

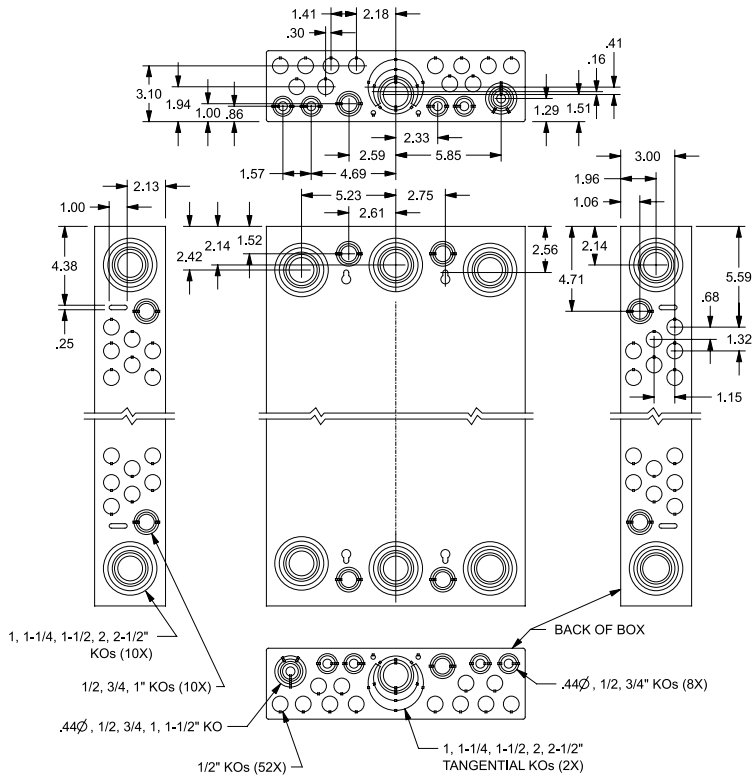
④ Outdoor enclosures are 14 1/2" wide by 4 1/4" deep.

⑤ Non-convertible to main breaker.

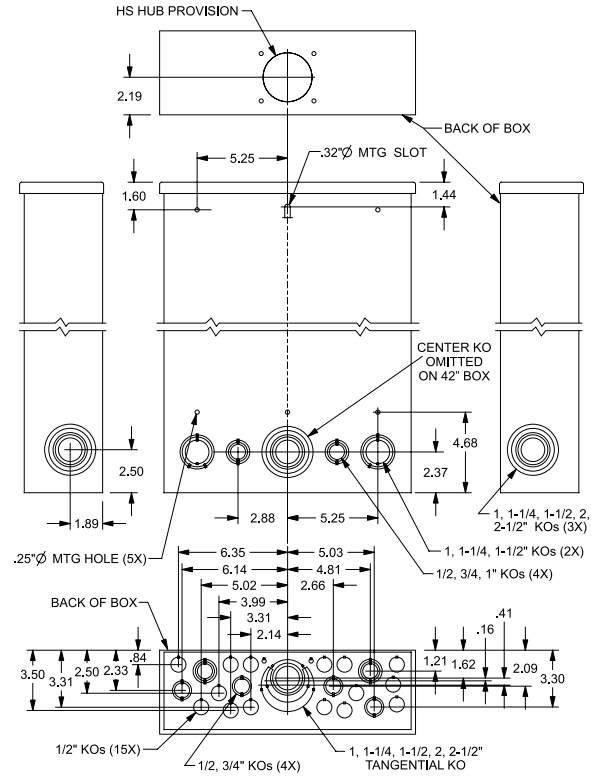
⑥ Suitable for use as service entrance equipment when not more than six main disconnecting means are provided. See article 230.71 of the NEC®.

# Load Centers

## 3-Phase Indoor and Outdoor Enclosures—Knockout Diagrams



ES and PL  
3-Phase Indoor



ES and PL  
3-Phase Outdoor

Siemens Industry, Inc.  
Murray Electrical Products  
5400 Triangle Parkway  
Norcross, GA 30092

1-800-241-4453  
info.us@siemens.com

[www.murrayconnect.com](http://www.murrayconnect.com)

Subject to change without prior notice  
Order No.:MYS-ESPLS-0711  
All rights reserved  
Printed in USA  
© 2011 Siemens Industry, Inc.

The information provided in this guide contains merely general descriptions or characteristics of performance which in case of actual use do not always apply as described or which may change as a result of further development of the products. An obligation to provide the respective characteristics shall only exist if expressly agreed in the terms of contract.

Siemens is a registered trademark of Siemens AG. Murray is a registered trademark of Siemens Industry, Inc. Product names mentioned may be trademarks or registered trademarks of their respective companies. Specifications are subject to change without notice.